

# BCNP1 (N-17): sc-130092

## BACKGROUND

The gene encoding the BCNP1 protein maps to human chromosome 19. Consisting of around 63 million bases with over 1,400 genes, chromosome 19 makes up over 2% of human genomic DNA. Chromosome 19 includes a diversity of interesting genes and is recognized for having the greatest gene density of the human chromosomes. It is the genetic home for a number of immunoglobulin superfamily members including the killer cell and leukocyte Ig-like receptors, a number of ICAMs, the CEACAM and PSG family, and Fc $\alpha$  receptors. Key genes for eye color and hair color also map to chromosome 19. Peutz-Jeghers syndrome, spinocerebellar ataxia type 6, the stroke disorder CADASIL, hypercholesterolemia and Insulin-dependent diabetes have been linked to chromosome 19. Translocations with chromosome 19 and chromosome 14 can be seen in some lymphoproliferative disorders and typically involve the proto-oncogene Bcl-3.

## REFERENCES

- Zimmermann, W., Weber, B., Ortlieb, B., Rudert, F., Schempp, W., Fiebig, H.H., Shively, J.E., von Kleist, S. and Thompson, J.A. 1988. Chromosomal localization of the carcinoembryonic antigen gene family and differential expression in various tumors. *Cancer Res.* 48: 2550-2554.
- LaPoint, S.F., Patel, U. and Rubio, A. 2000. Cerebral autosomal dominant arteriopathy with subcortical infarcts and leukoencephalopathy (CADASIL). *Adv. Anat. Pathol.* 7: 307-321.
- Trettel, F., Mantuano, E., Calabresi, V., Veneziano, L., Olsen, A.S., Georgescu, A., Gordon, L., Sabbadini, G., Frontali, M. and Jodice C. 2000. A fine physical map of the CACNA1A gene region on 19p13.1-p13.2 chromosome. *Gene* 241: 45-50.
- Buchet-Poyau, K., Mehenni, H., Radhakrishna, U. and Antonarakis, S.E. 2002. Search for the second Peutz-Jeghers syndrome locus: exclusion of the STK13, PRKCG, KLK10, and PSCD2 genes on chromosome 19 and the STK11IP gene on chromosome 2. *Cytogenet. Genome Res.* 97: 171-178.
- Moodie, S.J., Norman, P.J., King, A.L., Fraser, J.S., Curtis, D., Ellis, H.J., Vaughan, R.W. and Ciclitira, P.J. 2002. Analysis of candidate genes on chromosome 19 in coeliac disease: an association study of the KIR and LILR gene clusters. *Eur. J. Immunogenet.* 29: 287-291.
- Grimwood, J., Gordon, L.A., Olsen, A., Terry, A., Schmutz, J., Lamerdin, J., Hellsten, U., Goodstein, D., Couronne, O., Tran-Gyamfi, M., Aerts, A., Altherr, M., Ashworth, L., Bajorek, E., Black, S., Branscomb, E., Caenepeel, S., Carrano, A., et al. 2004. The DNA sequence and biology of human chromosome 19. *Nature.* 428: 529-535.
- Parham, P. 2005. Immunogenetics of killer cell immunoglobulin-like receptors. *Mol. Immunol.* 42: 459-462.
- Brocke-Heidrich, K., Ge, B., Cvijic, H., Pfeifer, G., Löffler, D., Henze, C., McKeithan, T.W. and Horn, F. 2006. Bcl-3 is induced by IL-6 via Stat3 binding to intronic enhancer HS4 and represses its own transcription. *Oncogene* 25: 7297-7304.
- Vikelis, M., Papatriantafyllou, J. and Karageorgiou, C.E. 2007. A novel CADASIL-causing mutation in a stroke patient. *Swiss Med. Wkly.* 137: 323-325.

## CHROMOSOMAL LOCATION

Genetic locus: FAM129C (human) mapping to 19p13.11.

## SOURCE

BCNP1 (N-17) is a purified rabbit polyclonal antibody raised against a peptide mapping at the N-terminus of BCNP1 of human origin.

## PRODUCT

Each vial contains 100  $\mu$ g IgG in 1.0 ml PBS with < 0.1% sodium azide and 0.1% gelatin.

## APPLICATIONS

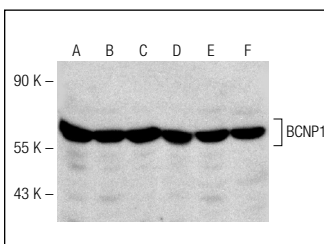
BCNP1 (N-17) is recommended for detection of BCNP1 of human origin by Western Blotting (starting dilution 1:200, dilution range 1:100-1:1000), immunoprecipitation [1-2  $\mu$ g per 100-500  $\mu$ g of total protein (1 ml of cell lysate)], immunofluorescence (starting dilution 1:50, dilution range 1:50-1:500) and immunohistochemistry (including paraffin-embedded sections) (starting dilution 1:50, dilution range 1:50-1:500).

Suitable for use as control antibody for BCNP1 siRNA (h): sc-97310, BCNP1 shRNA Plasmid (h): sc-97310-SH and BCNP1 shRNA (h) Lentiviral Particles: sc-97310-V.

Molecular Weight of BCNP1 isoforms: 77/74/72/68/66 kDa.

Positive Controls: K-562 whole cell lysate: sc-2203, Daudi cell lysate: sc-2415 or HEL 92.1.7 cell lysate: sc-2270.

## DATA



BCNP1 (N-17): sc-130092. Western blot analysis of BCNP1 expression in BJAB (A), Jurkat (B), Raji (C), Daudi (D), HEL 92.1.7 (E) and K-562 (F) whole cell lysates.

## STORAGE

Store at 4° C, **\*\*DO NOT FREEZE\*\***. Stable for one year from the date of shipment. Non-hazardous. No MSDS required.

## RESEARCH USE

For research use only, not for use in diagnostic procedures.

## PROTOCOLS

See our web site at [www.scbt.com](http://www.scbt.com) or our catalog for detailed protocols and support products.