



ARL2 (N-20): sc-130118

BACKGROUND

ADP-ribosylation factors (ARFs) are highly conserved guanine nucleotide binding proteins that enhance the ADP-ribosyltransferase activity of cholera toxin. ARFs are important in eukaryotic vesicular trafficking pathways and they play an essential role in the activation of phospholipase D (PC-PLD). ARL2 (ADP-ribosylation factor-like protein 2), also known as ARFL2, is a 184 amino acid protein that belongs to the ARF family of ADP-ribosylation factors. Expressed ubiquitously, ARL2 functions as a component of a secretory pathway that is involved in the calcium-dependent release of acetylcholine. Additionally, ARL2 plays a role in the folding of tubule proteins, thereby playing an important role in microtubule dynamics and cell cycle progression. Unlike other members of the ARF family, ARL2 does not act as an activator of the catalytic subunit of cholera toxin.

REFERENCES

- Clark, J., et al. 1993. Selective amplification of additional members of the ADP-ribosylation factor (ARF) family: cloning of additional human and *Drosophila* ARF-like genes. *Proc. Natl. Acad. Sci. USA* 90: 8952-8956.
- Bhamidipati, A., et al. 2000. ADP ribosylation factor-like protein 2 (ARL2) regulates the interaction of Tubulin-folding cofactor D with native Tubulin. *J. Cell Biol.* 149: 1087-1096.
- Hanzal-Bayer, M., et al. 2002. The complex of ARL2-GTP and PDEδ: from structure to function. *EMBO J.* 21: 2095-2106.
- Sharer, J.D., et al. 2002. ARL2 and BART enter mitochondria and bind the adenine nucleotide transporter. *Mol. Biol. Cell* 13: 71-83.
- Kobayashi, A., et al. 2003. Photoreceptor synaptic protein HRG4 (UNC119) interacts with ARL2 via a putative conserved domain. *FEBS Lett.* 534: 26-32.
- Sherm, J.F., et al. 2003. Cytosolic ARL2 is complexed with cofactor D and protein phosphatase 2A. *J. Biol. Chem.* 278: 40829-40836.
- Zhou, C., et al. 2006. ARL2 and ARL3 regulate different microtubule-dependent processes. *Mol. Biol. Cell* 17: 2476-2487.

CHROMOSOMAL LOCATION

Genetic locus: ARL2 (human) mapping to 11q13.1.

SOURCE

ARL2 (N-20) is a purified rabbit polyclonal antibody raised against a peptide mapping near the N-terminus of ARL2 of human origin.

PRODUCT

Each vial contains 100 µg IgG in 1.0 ml PBS with < 0.1% sodium azide and 0.1% gelatin.

STORAGE

Store at 4° C, **DO NOT FREEZE**. Stable for one year from the date of shipment. Non-hazardous. No MSDS required.

RESEARCH USE

For research use only, not for use in diagnostic procedures.

APPLICATIONS

ARL2 (N-20) is recommended for detection of ARL2 of human origin by Western Blotting (starting dilution 1:200, dilution range 1:100-1:1000), immunoprecipitation [1-2 µg per 100-500 µg of total protein (1 ml of cell lysate)] and solid phase ELISA (starting dilution 1:30, dilution range 1:30-1:3000).

Suitable for use as control antibody for ARL2 siRNA (h): sc-106782, ARL2 shRNA Plasmid (h): sc-106782-SH and ARL2 shRNA (h) Lentiviral Particles: sc-106782-V.

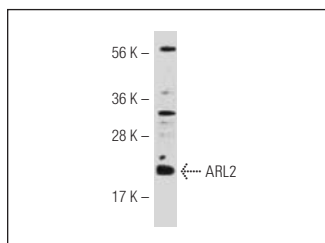
Molecular Weight of ARL2: 21 kDa.

Positive Controls: HeLa whole cell lysate: sc-2200.

RECOMMENDED SECONDARY REAGENTS

To ensure optimal results, the following support (secondary) reagents are recommended: 1) Western Blotting: use goat anti-rabbit IgG-HRP: sc-2004 (dilution range: 1:2000-1:100,000) or Cruz Marker™ compatible goat anti-rabbit IgG-HRP: sc-2030 (dilution range: 1:2000-1:5000), Cruz Marker™ Molecular Weight Standards: sc-2035, TBS Blotto A Blocking Reagent: sc-2333 and Western Blotting Luminol Reagent: sc-2048. 2) Immunoprecipitation: use Protein A/G PLUS-Agarose: sc-2003 (0.5 ml agarose/2.0 ml).

DATA



ARL2 (N-20): sc-130118. Western blot analysis of ARL2 expression in HeLa whole cell lysate.

PROTOCOLS

See our web site at www.scbt.com or our catalog for detailed protocols and support products.