

IL-1Rrp2 (C-22): sc-130154

BACKGROUND

IL-1Rrp2 (interleukin-1 receptor-related protein 2) or IL1RL2, is a member of the interleukin-1/Toll-like receptor family and is highly expressed in brain, skin and mammary and mucosal epithelial cells. IL-1Rrp2 exhibits 42% homology with interleukin-1 type 1 receptor and 26% homology with interleukin-1 type 2 receptor. IL-1Rrp2 mediates NF κ B activation, MAPK activation and inflammatory responses triggered by ligands IL-1F6, IL-1F8 and IL-1F9. Signaling via IL-1Rrp2 also requires IL-1RAcP (interleukin-1 accessory protein). IL-1Rrp2 may play a role in immune defense in the GI tract and skin. IL-1Rrp2 may also be involved in the pathogenesis of rheumatoid arthritis (RA).

REFERENCES

1. Lovenberg, T.W., Crowe, P.D., Liu, C., Chalmers, D.T., Liu, X.J., Liaw, C., Clevenger, W., Oltersdorf, T., De Souza, E.B. and Maki, R.A. 1996. Cloning of a cDNA encoding a novel interleukin-1 receptor related protein (IL-1Rrp2). *J. Neuroimmunol.* 70: 113-122.
2. Dale, M. and Nicklin, M.J. 1999. Interleukin-1 receptor cluster: gene organization of IL1R2, IL1R1, IL1RL2 (IL-1Rrp2), IL1RL1 (T1/ST2), and IL18R1 (IL-1Rrp) on human chromosome 2q. *Genomics* 57: 177-179.
3. Debets, R., Timans, J.C., Homey, B., Zurawski, S., Sana, T.R., Lo, S., Wagner, J., Edwards, G., Clifford, T., Menon, S., Bazan, J.F. and Kastelein, R.A. 2001. Two novel IL-1 family members, IL-1 δ and IL-1 ϵ , function as an antagonist and agonist of NF κ B activation through the orphan IL-1 receptor-related protein 2. *J. Immunol.* 167: 1440-1446.
4. Berglöf, E., Andre, R., Renshaw, B.R., Allan, S.M., Lawrence, C.B., Rothwell, N.J. and Pinteaux, E. 2003. IL-1Rrp2 expression and IL-1F9 (IL-1H1) actions in brain cells. *J. Neuroimmunol.* 139: 36-43.
5. Towne, J.E., Garka, K.E., Renshaw, B.R., Virca, G.D. and Sims, J.E. 2004. Interleukin (IL)-1F6, IL-1F8, and IL-1F9 signal through IL-1Rrp2 and IL-1RAcP to activate the pathway leading to NF κ B and MAPKs. *J. Biol. Chem.* 279: 13677-13688.
6. Wang, P., Meinhardt, B., Andre, R., Renshaw, B.R., Kimber, I., Rothwell, N.J. and Pinteaux, E. 2005. The interleukin-1-related cytokine IL-1F8 is expressed in glial cells, but fails to induce IL-1 β signalling responses. *Cytokine* 29: 245-250.
7. Andre, R., Lerouet, D., Kimber, I., Pinteaux, E. and Rothwell, N.J. 2005. Regulation of expression of the novel IL-1 receptor family members in the mouse brain. *J. Neurochem.* 95: 324-330.
8. Magne, D., Palmer, G., Barton, J.L., Mézin, F., Talabot-Ayer, D., Bas, S., Duffy, T., Noger, M., Guerne, P.A., Nicklin, M.J. and Gabay, C. 2006. The new IL-1 family member IL-1F8 stimulates production of inflammatory mediators by synovial fibroblasts and articular chondrocytes. *Arthritis Res. Ther.* 8: R80.
9. Barksby, H.E., Lea, S.R., Preshaw, P.M. and Taylor, J.J. 2007. The expanding family of interleukin-1 cytokines and their role in destructive inflammatory disorders. *Clin. Exp. Immunol.* 149: 217-225.

CHROMOSOMAL LOCATION

Genetic locus: IL1RL2 (human) mapping to 2q12.1.

SOURCE

IL-1Rrp2 (C-22) is a purified rabbit polyclonal antibody raised against a peptide mapping near the C-terminus of IL-1Rrp2 of human origin.

PRODUCT

Each vial contains 100 μ g IgG in 1.0 ml PBS with < 0.1% sodium azide and 0.1% gelatin.

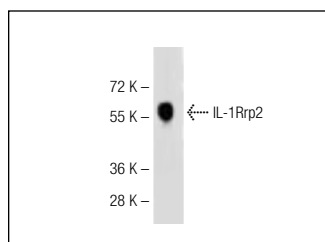
APPLICATIONS

IL-1Rrp2 (C-22) is recommended for detection of IL-1Rrp2 of human origin by Western Blotting (starting dilution 1:200, dilution range 1:100-1:1000), immunoprecipitation [1-2 μ g per 100-500 μ g of total protein (1 ml of cell lysate)], immunofluorescence (starting dilution 1:50, dilution range 1:50-1:500), immunohistochemistry (including paraffin-embedded sections) (starting dilution 1:50, dilution range 1:50-1:500) and solid phase ELISA (starting dilution 1:30, dilution range 1:30-1:3000).

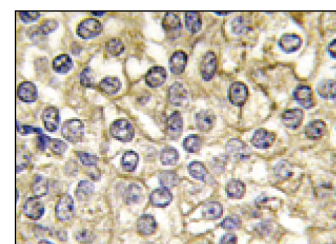
Suitable for use as control antibody for IL-1Rrp2 siRNA (h): sc-94696, IL-1Rrp2 shRNA Plasmid (h): sc-94696-SH and IL-1Rrp2 shRNA (h) Lentiviral Particles: sc-94696-V.

Molecular Weight of IL-1Rrp2: 65 kDa.

DATA



IL-1Rrp2 (C-22): sc-130154. Western blot analysis of IL-1Rrp2 expression in HL-60 whole cell lysate.



IL-1Rrp2 (C-22): sc-130154. Immunoperoxidase staining of formalin fixed, paraffin-embedded human prostate carcinoma tissue showing cytoplasmic staining.

STORAGE

Store at 4° C, **DO NOT FREEZE**. Stable for one year from the date of shipment. Non-hazardous. No MSDS required.

RESEARCH USE

For research use only, not for use in diagnostic procedures.

MONOS
Satisfaction
Guaranteed

Try **IL-1Rrp2 (5G5): sc-293377**, our highly recommended monoclonal alternative to IL-1Rrp2 (C-22).