

MAGE-A10 (C-23): sc-130161

BACKGROUND

The melanoma-associated antigen (MAGE) family consists of a number of antigens recognized by cytotoxic T lymphocytes. The MAGE genes were initially isolated from different kinds of tumors and, based on their virtually exclusive tumor-specific expression in adult tissues, they have been used as targets for cancer immunotherapy. MAGE genes encode for tumor-rejection antigens that are expressed in tumors of different histologic types and in normal testes and placenta. MAGE-A10 (melanoma antigen family A, 10), also known as MAGE10 or CT1.10 (cancer/testis antigen 1.10), is a 369 amino acid protein that contains one MAGE domain and is thought to play a role in embryonic development and tumor progression. Like other members of the MAGE family, MAGE-A10 is expressed in head and neck squamous cell carcinoma, melanoma, breast cancer and lung cancer, suggesting that MAGE-A10 plays an important role in carcinogenesis.

REFERENCES

1. De Plaen, E., et al. 1994. Structure, chromosomal localization, and expression of 12 genes of the MAGE family. *Immunogenetics* 40: 360-369.
2. Rogner, U.C., et al. 1995. The melanoma antigen gene (MAGE) family is clustered in the chromosomal band Xq28. *Genomics* 29: 725-731.
3. Rimoldi, D., et al. 1999. cDNA and protein characterization of human MAGE-10. *Int. J. Cancer* 82: 901-907.

CHROMOSOMAL LOCATION

Genetic locus: MAGEA10 (human) mapping to Xq28.

SOURCE

MAGE-A10 (C-23) is a purified rabbit polyclonal antibody raised against a peptide mapping near the C-terminus of MAGE-A10 of human origin.

PRODUCT

Each vial contains 100 µg IgG in 1.0 ml PBS with < 0.1% sodium azide and 0.1% gelatin.

APPLICATIONS

MAGE-A10 (C-23) is recommended for detection of MAGE-A10 of human origin by Western Blotting (starting dilution 1:200, dilution range 1:100-1:1000), immunoprecipitation [1-2 µg per 100-500 µg of total protein (1 ml of cell lysate)], immunofluorescence (starting dilution 1:50, dilution range 1:50-1:500), immunohistochemistry (including paraffin-embedded sections) (starting dilution 1:50, dilution range 1:50-1:500) and solid phase ELISA (starting dilution 1:30, dilution range 1:30-1:3000).

Suitable for use as control antibody for MAGE-A10 siRNA (h): sc-108015, MAGE-A10 shRNA Plasmid (h): sc-108015-SH and MAGE-A10 shRNA (h) Lentiviral Particles: sc-108015-V.

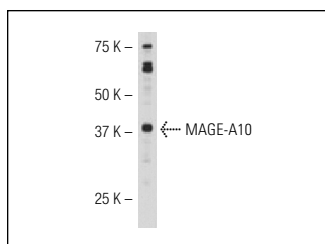
Molecular Weight of MAGE-A10: 41 kDa.

Positive Controls: HL-60 whole cell lysate: sc-2209.

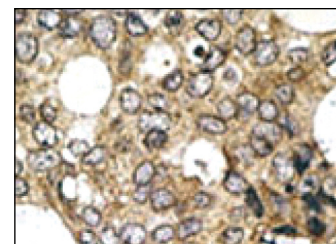
RECOMMENDED SECONDARY REAGENTS

To ensure optimal results, the following support (secondary) reagents are recommended: 1) Western blotting: use goat anti-rabbit IgG-HRP: sc-2004 (dilution range: 1:2000-1:100,000) or Cruz Marker™ compatible goat anti-rabbit IgG-HRP: sc-2030 (dilution range: 1:2000-1:5000), Cruz Marker™ Molecular Weight Standards: sc-2035, TBS Blotto B Blocking Reagent: sc-2335 (use 50 mM NaF, sc-24988, as diluent) and Western Blotting Luminol Reagent: sc-2048. 2) Immunoprecipitation: use Protein A/G PLUS-Agarose: sc-2003 (0.5 ml agarose/2.0 ml). 3) Immunofluorescence: use goat anti-rabbit IgG-FITC: sc-2012 (dilution range: 1:100-1:400) or goat anti-rabbit IgG-TR: sc-2780 (dilution range: 1:100-1:400) with UltraCruz™ Mounting Medium: sc-24941. 4) Immunohistochemistry: use ImmunoCruz™: sc-2051 or ABC: sc-2018 rabbit IgG Staining Systems.

DATA



MAGE-A10 (C-23): sc-130161. Western blot analysis of MAGE-A10 expression in HL-60 whole cell lysate.



MAGE-A10 (C-23): sc-130161. Immunoperoxidase staining of formalin fixed, paraffin-embedded human cancer tissue showing cytoplasmic staining.

STORAGE

Store at 4° C, ****DO NOT FREEZE****. Stable for one year from the date of shipment. Non-hazardous. No MSDS required.

RESEARCH USE

For research use only, not for use in diagnostic procedures.

PROTOCOLS

See our web site at www.scbt.com or our catalog for detailed protocols and support products.

MONOS
Satisfaction
Guaranteed

Try **MAGE-A (6C1): sc-20034**, our highly recommended monoclonal alternative to MAGE-A10 (C-23). Also, for AC, HRP, FITC, PE, Alexa Fluor[®] 488 and Alexa Fluor[®] 647 conjugates, see **MAGE-A (6C1): sc-20034**.