

MOB1B (C-18): sc-130175

BACKGROUND

Sterile-20 (Ste20) is a serine/threonine kinase in *Saccharomyces cerevisiae* that is involved in relaying signals from G protein-coupled receptors to cytosolic MAP kinase cascades. The mammalian homologs MST-1 and MST-2, also designated Krs-2 and Krs-1, respectively, are major regulators of cell proliferation and survival during development. MST-1/MST-2 phosphorylate MOBKL1A and MOBKL1B in an MST-1/MST-2-dependent manner in mitosis and in response to okadaic acid or H₂O₂. MOBKL1A and MOBKL1B, also designated MOB1A and MOB1B, bind to and regulate downstream targets such as the NDR-family protein kinases and LATS1 kinase. Therefore, MOBKL1A and MOBKL1B participate in cell cycle checkpoint control and tumor inhibition.

REFERENCES

1. Leberer, E., Dignard, D., Harcus, D., Thomas, D.Y. and Whiteway, M. 1992. The protein kinase homologue Ste20p is required to link the yeast pheromone response G-protein $\beta\gamma$ subunits to downstream signalling components. *EMBO J.* 11: 4815-4824.
2. Schinkmann, K. and Blenis, J. 1997. Cloning and characterization of a human Ste20-like protein kinase with unusual cofactor requirements. *J. Biol. Chem.* 272: 28695-28703.
3. Bichsel, S.J., Tamaskovic, R., Stegert, M.R. and Hemmings, B.A. 2004. Mechanism of activation of NDR (nuclear Dbf2-related) protein kinase by the hMOB1 protein. *J. Biol. Chem.* 279: 35228-35235.
4. Bothos, J., Tuttle, R.L., Ottey, M., Luca, F.C. and Halazonetis, T.D. 2005. Human LATS1 is a mitotic exit network kinase. *Cancer Res.* 65: 6568-6575.
5. Hergovich, A., Bichsel, S.J. and Hemmings, B.A. 2005. Human NDR kinases are rapidly activated by MOB proteins through recruitment to the plasma membrane and phosphorylation. *Mol. Cell. Biol.* 25: 8259-8272.
6. Hergovich, A., Schmitz, D. and Hemmings, B.A. 2006. The human tumour suppressor LATS1 is activated by human MOB1 at the membrane. *Biochem. Biophys. Res. Commun.* 345: 50-58.
7. Sasaki, H., Kawano, O., Endo, K., Suzuki, E., Yukiue, H., Kobayashi, Y., Yano, M. and Fujii, Y. 2007. Human MOB1 expression in non-small-cell lung cancer. *Clin. Lung Cancer.* 8: 273-276.
8. Praskova, M., Xia, F. and Avruch, J. 2008. MOBKL1A/MOBKL1B phosphorylation by MST-1 and MST-2 inhibits cell proliferation. *Curr. Biol.* 18: 311-321.

CHROMOSOMAL LOCATION

Genetic locus: MOB1B (human) mapping to 4q13.3.

SOURCE

MOB1B (C-18) is a purified rabbit polyclonal antibody raised against a peptide mapping near the C-terminus of MOB1B of human origin.

STORAGE

Store at 4° C, **DO NOT FREEZE**. Stable for one year from the date of shipment. Non-hazardous. No MSDS required.

PRODUCT

Each vial contains 100 μ g IgG in 1.0 ml PBS with < 0.1% sodium azide and 0.1% gelatin.

APPLICATIONS

MOB1B (C-18) is recommended for detection of MOB1B of human origin by Western Blotting (starting dilution 1:200, dilution range 1:100-1:1000), immunoprecipitation [1-2 μ g per 100-500 μ g of total protein (1 ml of cell lysate)], immunofluorescence (starting dilution 1:50, dilution range 1:50-1:500), immunohistochemistry (including paraffin-embedded sections) (starting dilution 1:50, dilution range 1:50-1:500) and solid phase ELISA (starting dilution 1:30, dilution range 1:30-1:3000).

Suitable for use as control antibody for MOB1B siRNA (h): sc-88864, MOB1B shRNA Plasmid (h): sc-88864-SH and MOB1B shRNA (h) Lentiviral Particles: sc-88864-V.

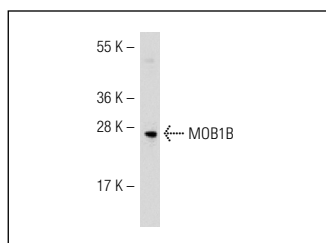
Molecular Weight of MOB1B: 25 kDa.

Positive Controls: Ramos whole cell lysate.

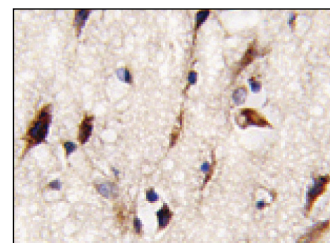
RECOMMENDED SECONDARY REAGENTS

To ensure optimal results, the following support (secondary) reagents are recommended: 1) Western blotting: use goat anti-rabbit IgG-HRP: sc-2004 (dilution range: 1:2000-1:100,000) or Cruz Marker™ compatible goat anti-rabbit IgG-HRP: sc-2030 (dilution range: 1:2000-1:5000), Cruz Marker™ Molecular Weight Standards: sc-2035, TBS Blotto B Blocking Reagent: sc-2335 (use 50 mM NaF, sc-24988, as diluent) and Western Blotting Luminol Reagent: sc-2048. 2) Immunoprecipitation: use Protein A/G PLUS-Agarose: sc-2003 (0.5 ml agarose/2.0 ml). 3) Immunofluorescence: use goat anti-rabbit IgG-FITC: sc-2012 (dilution range: 1:100-1:400) or goat anti-rabbit IgG-TR: sc-2780 (dilution range: 1:100-1:400) with UltraCruz™ Mounting Medium: sc-24941. 4) Immunohistochemistry: use ImmunoCruz™: sc-2051 or ABC: sc-2018 rabbit IgG Staining Systems.

DATA



MOB1B (C-18): sc-130175. Western blot analysis of MOB1B expression in Ramos whole cell lysate.



MOB1B (C-18): sc-130175. Immunoperoxidase staining of formalin fixed, paraffin-embedded human brain tissue showing cytoplasmic staining.

RESEARCH USE

For research use only, not for use in diagnostic procedures.