

# SRPK3 (I-24): sc-130269

## BACKGROUND

Human SRPK3 (also known as MSSK, muscle specific serine kinase 1) is a 533 amino acid protein kinase belonging to the Ser/Arg family of RNA splicing factors. Serine arginine protein kinases (SRPK) phosphorylate serine/arginine repeat-containing proteins. The SRPK3 transcript is MEF-2 dependent and is detectable in the heart and skeletal muscle from embryogenesis to adulthood. Normal muscle growth and homeostasis require MEF2-dependent signaling by SRPK3. SRPK3 exists as two isoforms that are produced by alternative splicing events.

## REFERENCES

1. Grunau, C., Hindermann, W. and Rosenthal, A. 2000. Large-scale methylation analysis of human genomic DNA reveals tissue-specific differences between the methylation profiles of genes and pseudogenes. *Hum. Mol. Genet.* 9: 2651-2663.
2. Nakagawa, O., Arnold, M., Nakagawa, M., Hamada, H., Shelton, J.M., Kusano, H., Harris, T.M., Childs, G., Campbell, K.P., Richardson, J.A., Nishino, I. and Olson, E.N. 2005. Centronuclear myopathy in mice lacking a novel muscle-specific protein kinase transcriptionally regulated by MEF-2. *Genes Dev.* 19: 2066-2077.
3. Ding, J.H., Zhong, X.Y., Hagopian, J.C., Cruz, M.M., Ghosh, G., Feramisco, J., Adams, J.A. and Fu, X.D. 2006. Regulated cellular partitioning of SR protein-specific kinases in mammalian cells. *Mol. Biol. Cell.* 17: 876-885.
4. Barbosa-Morais, N.L., Carmo-Fonseca, M. and Aparício, S. 2006. Systematic genome-wide annotation of spliceosomal proteins reveals differential gene family expansion. *Genome Res.* 16: 66-77.
5. Fukuhara, T., Hosoya, T., Shimizu, S., Sumi, K., Oshiro, T., Yoshinaka, Y., Suzuki, M., Yamamoto, N., Herzenberg, L.A., Herzenberg, L.A. and Hagiwara, M. 2006. Utilization of host SR protein kinases and RNA-splicing machinery during viral replication. *Proc. Natl. Acad. Sci. USA* 103: 11329-11333.
6. Lukasiewicz, R., Velazquez-Dones, A., Huynh, N., Hagopian, J., Fu, X.D., Adams, J. and Ghosh, G. 2007. Structurally unique yeast and mammalian serine-arginine protein kinases catalyze evolutionarily conserved phosphorylation reactions. *J. Biol. Chem.* 282: 23036-23043.

## CHROMOSOMAL LOCATION

Genetic locus: SRPK3 (human) mapping to Xq28.

## SOURCE

SRPK3 (I-24) is a purified rabbit polyclonal antibody raised against a peptide mapping within an internal region of SRPK3 of human origin.

## PRODUCT

Each vial contains 100 µg IgG in 1.0 ml PBS with < 0.1% sodium azide and 0.1% gelatin.

## STORAGE

Store at 4° C, **\*\*DO NOT FREEZE\*\***. Stable for one year from the date of shipment. Non-hazardous. No MSDS required.

## APPLICATIONS

SRPK3 (I-24) is recommended for detection of SRPK3 of human origin by Western Blotting (starting dilution 1:200, dilution range 1:100-1:1000), immunoprecipitation [1-2 µg per 100-500 µg of total protein (1 ml of cell lysate)], immunofluorescence (starting dilution 1:50, dilution range 1:50-1:500), immunohistochemistry (including paraffin-embedded sections) (starting dilution 1:50, dilution range 1:50-1:500) and solid phase ELISA (starting dilution 1:30, dilution range 1:30-1:3000).

Suitable for use as control antibody for SRPK3 siRNA (h): sc-39233, SRPK3 shRNA Plasmid (h): sc-39233-SH and SRPK3 shRNA (h) Lentiviral Particles: sc-39233-V.

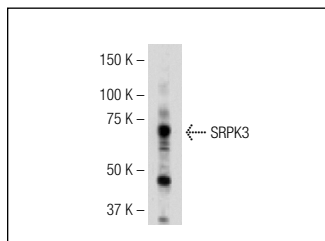
Molecular Weight of SRPK3: 59 kDa.

Positive Controls: A-375 cell lysate: sc-3811.

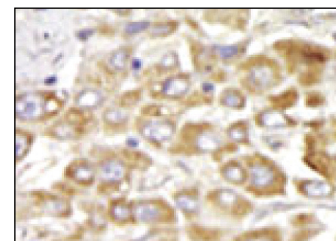
## RECOMMENDED SECONDARY REAGENTS

To ensure optimal results, the following support (secondary) reagents are recommended: 1) Western Blotting: use goat anti-rabbit IgG-HRP: sc-2004 (dilution range: 1:2000-1:100,000) or Cruz Marker™ compatible goat anti-rabbit IgG-HRP: sc-2030 (dilution range: 1:2000-1:5000), Cruz Marker™ Molecular Weight Standards: sc-2035, TBS Blotto A Blocking Reagent: sc-2333 and Western Blotting Luminol Reagent: sc-2048. 2) Immunoprecipitation: use Protein A/G PLUS-Agarose: sc-2003 (0.5 ml agarose/2.0 ml). 3) Immunofluorescence: use goat anti-rabbit IgG-FITC: sc-2012 (dilution range: 1:100-1:400) or goat anti-rabbit IgG-TR: sc-2780 (dilution range: 1:100-1:400) with UltraCruz™ Mounting Medium: sc-24941. 4) Immunohistochemistry: use ImmunoCruz™: sc-2051 or ABC: sc-2018 rabbit IgG Staining Systems.

## DATA



SRPK3 (I-24): sc-130269. Western blot analysis of SRPK3 expression in A375 whole cell lysate.



SRPK3 (I-24): sc-130269. Immunoperoxidase staining of formalin fixed, paraffin-embedded human cancer tissue showing cytoplasmic staining.

## RESEARCH USE

For research use only, not for use in diagnostic procedures.

**MONOS**  
Satisfaction  
Guaranteed

Try **SRPK (D-7): sc-398432**, our highly recommended monoclonal alternative to SRPK3 (I-24).