

LEPREL4 (FR-1): sc-130442

BACKGROUND

LEPREL4 (leprecan-like protein 4), also known as SC65 (synaptonemal complex protein SC65) or NOL55 (nucleolar autoantigen No55), is a 437 amino acid protein that belongs to the leprecan family. LEPREL4 is found specifically in the granular component of the nucleolus and during mitosis is found on the surface of chromosomes. LEPREL4 is post-translationally phosphorylated at tyrosine 234 and is encoded by a gene that maps to human chromosome 17. Chromosome 17 comprises over 2.5% of the human genome and encodes over 1,200 genes. Two key tumor suppressor genes are associated with chromosome 17, namely, p53 and BRCA1. Tumor suppressor p53 is necessary for maintenance of cellular genetic integrity by moderating cell fate through DNA repair versus cell death. Malfunction or loss of p53 expression is associated with malignant cell growth and Li-Fraumeni syndrome. Like p53, BRCA1 is directly involved in DNA repair, though specifically it is recognized as a genetic determinant of early onset breast cancer and predisposition to cancers of the ovary, colon, prostate gland and fallopian tubes.

REFERENCES

- Chen, Q., Pearlman, R.E. and Moens, P.B. 1992. Isolation and characterization of a cDNA encoding a synaptonemal complex protein. *Biochem. Cell Biol.* 70: 1030-1038.
- Ochs, R.L., Stein, T.W., Chan, E.K., Ruutu, M. and Tan, E.M. 1996. cDNA cloning and characterization of a novel nucleolar protein. *Mol. Biol. Cell* 7: 1015-1024.
- Fossa, A., Siebert, R., Aasheim, H.C., Maelandsmo, G.M., Berner, A., Fossa, S.D., Paus, E., Smeland, E.B. and Gaudernack, G. 2000. Identification of nucleolar protein No55 as a tumour-associated autoantigen in patients with prostate cancer. *Br. J. Cancer* 83: 743-749.
- De Marchis, L., Cropp, C., Sheng, Z.M., Bargo, S., Callahan, R. and DeMarchis, L. 2004. Candidate target genes for loss of heterozygosity on human chromosome 17q21. *Br. J. Cancer* 90: 2384-2389.
- Comtesse, N., Zippel, A., Walle, S., Monz, D., Backes, C., Fischer, U., Mayer, J., Ludwig, N., Hildebrandt, A., Keller, A., Steudel, W.I., Lenhof, H.P. and Meese, E. 2005. Complex humoral immune response against a benign tumor: frequent antibody response against specific antigens as diagnostic targets. *Proc. Natl. Acad. Sci. USA* 102: 9601-9606.
- Wang, Y., Du, D., Fang, L., Yang, G., Zhang, C., Zeng, R., Ullrich, A., Lottspeich, F. and Chen, Z. 2006. Tyrosine phosphorylated Par3 regulates epithelial tight junction assembly promoted by EGFR signaling. *EMBO J.* 25: 5058-5070.
- de Carvalho, C.E. and Colaiácovo, M.P. 2006. SUMO-mediated regulation of synaptonemal complex formation during meiosis. *Genes Dev.* 20: 1986-1992.

CHROMOSOMAL LOCATION

Genetic locus: LEPREL4 (human) mapping to 17q21.2.

RESEARCH USE

For research use only, not for use in diagnostic procedures.

SOURCE

LEPREL4 (FR-1) is a mouse monoclonal antibody raised against recombinant LEPREL4 of human origin.

PRODUCT

Each vial contains 100 µg IgG_{2a} kappa light chain in 1.0 ml of PBS with < 0.1% sodium azide and 0.1% gelatin.

APPLICATIONS

LEPREL4 (FR-1) is recommended for detection of LEPREL4 of human origin by Western Blotting (starting dilution 1:200, dilution range 1:100-1:1000) and immunoprecipitation [1-2 µg per 100-500 µg of total protein (1 ml of cell lysate)].

Suitable for use as control antibody for LEPREL4 siRNA (h): sc-94183, LEPREL4 shRNA Plasmid (h): sc-94183-SH and LEPREL4 shRNA (h) Lentiviral Particles: sc-94183-V.

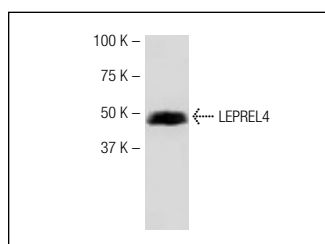
Molecular Weight of LEPREL4: 55 kDa.

Positive Controls: Hep G2 cell lysate: sc-2227 or HeLa whole cell lysate: sc-2200.

RECOMMENDED SUPPORT REAGENTS

To ensure optimal results, the following support reagents are recommended: 1) Western Blotting: use m-IgGκ BP-HRP: sc-516102 or m-IgGκ BP-HRP (Cruz Marker): sc-516102-CM (dilution range: 1:1000-1:10000), Cruz Marker™ Molecular Weight Standards: sc-2035, TBS Blotto A Blocking Reagent: sc-2333 and Western Blotting Luminol Reagent: sc-2048. 2) Immunoprecipitation: use Protein A/G PLUS-Agarose: sc-2003 (0.5 ml agarose/2.0 ml).

DATA



LEPREL4 (FR-1): sc-130442. Western blot analysis of LEPREL4 expression in Hep G2 whole cell lysate.

STORAGE

Store at 4° C, **DO NOT FREEZE**. Stable for one year from the date of shipment. Non-hazardous. No MSDS required.

PROTOCOLS

See our web site at www.scbt.com for detailed protocols and support products.