

Hippi (JA52): sc-130456

BACKGROUND

Programmed neuronal cell death is a feature of neurodegenerative disorders such as Alzheimer's and Huntington's disease, which occur later in human life. Huntington's disease at the molecular and cell level is characterized by polyglutamine expansion of the protein huntingtin (Htt) that leads to apoptotic-mediated neurodegenerative loss of medium spiny neurons throughout the striatum. Polyglutamine expansion reduces the level of association between Hip-1 and Htt, thereby increasing levels of free Hip-1 that then can be the candidate protein Hippi (Hip-1 protein interactor). The Hippi-Hip-1 heterodimer is a pro-apoptotic complex that recruits procaspase-8 and initiates caspase-8 activation, which may contribute to the neuronal cell death observed in individuals diagnosed with Huntington's disease. The human hippi gene maps to chromosome 3q13.13 and encodes a 429 amino acid protein.

REFERENCES

1. Wanker, E.E. 2002. Hip1 and Hippi participate in a novel cell death-signaling pathway. *Dev. Cell* 2: 126-128.
2. Gervais, F.G., Singaraja, R., Xanthoudakis, S., Gutekunst, C.A., Leavitt, B.R., Metzler, M., Hackam, A.S., Tam, J., Vaillancourt, J.P., Houtzager, V., Rasper, D.M., Roy, S., Hayden, M.R. and Nicholson, D.W. 2002. Recruitment and activation of caspase-8 by the Huntingtin-interacting protein Hip-1 and a novel partner Hippi. *Nat. Cell. Biol.* 4: 95-105.
3. Ferrier, V. 2002. Hip, hip, hippy! *Nat. Cell Biol.* 4: E30.
4. MacFarlane, M. 2002. HIPPI-HIP1-a deadly duo. *Trends Pharmacol. Sci.* 23: 210.
5. Mattson, M.P. 2002. Accomplices to neuronal death. *Nature* 415: 377-379.
6. Online Mendelian Inheritance in Man, OMIM[™]. 2002. Johns Hopkins University, Baltimore, MD. MIM Number: 606621. World Wide Web URL: <http://www.ncbi.nlm.nih.gov/omim/>
7. LocusLink Report (LocusID: 55081). <http://www.ncbi.nlm.nih.gov/LocusLink/>

CHROMOSOMAL LOCATION

Genetic locus: IFT57 (human) mapping to 3q13.12.

SOURCE

Hippi (JA52) is a mouse monoclonal antibody raised against recombinant Hippi of human origin.

PRODUCT

Each vial contains 100 µg IgG_{2a} kappa light chain in 1.0 ml of PBS with < 0.1% sodium azide and 0.1% gelatin.

STORAGE

Store at 4° C, ****DO NOT FREEZE****. Stable for one year from the date of shipment. Non-hazardous. No MSDS required.

RESEARCH USE

For research use only, not for use in diagnostic procedures.

APPLICATIONS

Hippi (JA52) is recommended for detection of Hippi of human origin by Western Blotting (starting dilution 1:200, dilution range 1:100-1:1000) and immunoprecipitation [1-2 µg per 100-500 µg of total protein (1 ml of cell lysate)].

Suitable for use as control antibody for Hippi siRNA (h): sc-105454, Hippi shRNA Plasmid (h): sc-105454-SH and Hippi shRNA (h) Lentiviral Particles: sc-105454-V.

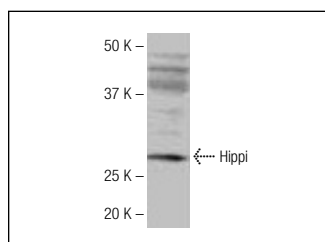
Molecular Weight of Hippi: 49 kDa.

Positive Controls: Jurkat whole cell lysate: sc-2204.

RECOMMENDED SUPPORT REAGENTS

To ensure optimal results, the following support reagents are recommended:
 1) Western Blotting: use m-IgGκ BP-HRP: sc-516102 or m-IgGκ BP-HRP (Cruz Marker): sc-516102-CM (dilution range: 1:1000-1:10000), Cruz Marker[™] Molecular Weight Standards: sc-2035, TBS Blotto A Blocking Reagent: sc-2333 and Western Blotting Luminol Reagent: sc-2048. 2) Immunoprecipitation: use Protein A/G PLUS-Agarose: sc-2003 (0.5 ml agarose/2.0 ml).

DATA



Hippi (JA52): sc-130456. Western blot analysis of Hippi expression in Jurkat whole cell lysate.

PROTOCOLS

See our web site at www.scbt.com for detailed protocols and support products.