

FGGY (J-5): sc-130457

BACKGROUND

FGGY, also known as FLJ10986, is a 551 amino acid member of the FGGY kinase family that exists as 4 isoforms which are produced by alternative splicing events. Expressed in lung, kidney, small intestine, liver and fetal brain, FGGY is encoded by a gene that maps to chromosome 1 and, when mutated, is associated with sporadic amyotrophic lateral sclerosis (ALS). ALS is a neurodegenerative disorder that affects motor neurons and results in fatal paralysis, usually within 2 to 5 years after initial diagnosis. Chromosome 1, on which the gene encoding FGGY is located, is the largest human chromosome, spanning about 260 million base pairs and making up 8% of the human genome. There are about 3,000 genes on chromosome 1, many of which are associated with genetic diseases, including Hutchinson-Gilford progeria, familial adenomatous polyposis, Stickler syndrome, Gaucher disease and Usher syndrome.

REFERENCES

- Blackwood, D.H., Fordyce, A., Walker, M.T., St Clair, D.M., Porteous, D.J. and Muir, W.J. 2001. Schizophrenia and affective disorders - cosegregation with a translocation at chromosome 1q42 that directly disrupts brain-expressed genes: clinical and P300 findings in a family. *Am. J. Hum. Genet.* 69: 428-433.
- Online Mendelian Inheritance in Man, OMIM™. 2002. Johns Hopkins University, Baltimore, MD. MIM Number: 611370. World Wide Web URL: <http://www.ncbi.nlm.nih.gov/omim/>
- Weise, A., Starke, H., Mrasek, K., Claussen, U. and Liehr, T. 2005. New insights into the evolution of chromosome 1. *Cytogenet. Genome Res.* 108: 217-222.
- Gregory, S.G., Barlow, K.F., McLay, K.E., Kaul, R., Swarbreck, D., Dunham, A., Scott, C.E., Howe, K.L., Woodfine, K.C., Spencer, C.A., Jones, M.C., Gillson, C., Searle, S., Zhou, Y., Kokocinski, F., McDonald, L., et al. 2006. The DNA sequence and biological annotation of human chromosome 1. *Nature* 441: 315-321.
- Hennah, W., Thomson, P., Peltonen, L. and Porteous, D. 2006. Genes and schizophrenia: beyond schizophrenia: the role of DISC-1 in major mental illness. *Schizophr. Bull.* 32: 409-416.
- Marzin, Y., Jamet, D., Douet-Guilbert, N., Morel, F., Le Bris, M.J., Morice, P., Abgrall, J.F., Berthou, C. and De Braekeleer, M. 2006. Chromosome 1 abnormalities in multiple myeloma. *Anticancer Res.* 26: 953-959.
- Dunckley, T., Huentelman, M.J., Craig, D.W., Pearson, J.V., Szelinger, S., Joshupura, K., Halperin, R.F., Stamper, C., Jensen, K.R., Letizia, D., Hesterlee, S.E., Pestronk, A., Levine, T., Bertorini, T., Graves, M.C., Mozaffar, T., Jackson, C.E., Bosch, P., et al. 2007. Whole-genome analysis of sporadic amyotrophic lateral sclerosis. *N. Engl. J. Med.* 357: 775-788.

CHROMOSOMAL LOCATION

Genetic locus: FGGY (human) mapping to 1p32.1; Fggy (mouse) mapping to 4 C5.

RESEARCH USE

For research use only, not for use in diagnostic procedures.

SOURCE

FGGY (J-5) is a mouse monoclonal antibody raised against recombinant FGGY of human origin.

PRODUCT

Each vial contains 100 µg IgG_{2b} kappa light chain in 1.0 ml PBS with < 0.1% sodium azide and 0.1% gelatin.

APPLICATIONS

FGGY (J-5) is recommended for detection of FGGY of mouse, rat and human origin by Western Blotting (starting dilution 1:200, dilution range 1:100-1:1000) and immunoprecipitation [1-2 µg per 100-500 µg of total protein (1 ml of cell lysate)].

Suitable for use as control antibody for FGGY siRNA (h): sc-88466, FGGY siRNA (m): sc-145168, FGGY shRNA Plasmid (h): sc-88466-SH, FGGY shRNA Plasmid (m): sc-145168-SH, FGGY shRNA (h) Lentiviral Particles: sc-88466-V and FGGY shRNA (m) Lentiviral Particles: sc-145168-V.

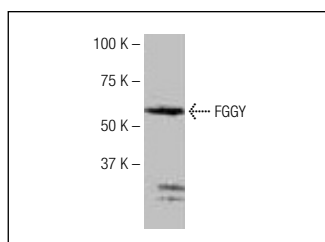
Molecular Weight of FGGY isoforms 1/5: 60/50 kDa.

Positive Controls: HeLa whole cell lysate: sc-2200.

RECOMMENDED SUPPORT REAGENTS

To ensure optimal results, the following support reagents are recommended: 1) Western Blotting: use m-IgGκ BP-HRP: sc-516102 or m-IgGκ BP-HRP (Cruz Marker): sc-516102-CM (dilution range: 1:1000-1:10000), Cruz Marker™ Molecular Weight Standards: sc-2035, TBS Blotto A Blocking Reagent: sc-2333 and Western Blotting Luminol Reagent: sc-2048. 2) Immunoprecipitation: use Protein A/G PLUS-Agarose: sc-2003 (0.5 ml agarose/2.0 ml).

DATA



FGGY (J-5): sc-130457. Western blot analysis of FGGY expression in HeLa whole cell lysate.

STORAGE

Store at 4° C, **DO NOT FREEZE**. Stable for one year from the date of shipment. Non-hazardous. No MSDS required.

PROTOCOLS

See our web site at www.scbt.com for detailed protocols and support products.