

Ini1 (H-300): sc-13055

BACKGROUND

The SWI/SNF complex is involved in the activation of transcription via the remodeling of nucleosome structure in an ATP-dependent manner. Brm (also designated SNF1 or SNF2 α) and Brg-1 (also designated SNF2 or SNF2 β) are the ATPase subunits of the mammalian SWI/SNF complex. Brm, Brg-1, Ini1 (integrase interactor 1, also designated SNF5), BAF155 (also designated SRG3) and BAF170 are thought to comprise the functional core of the SWI/SNF complex. Addition of Ini1, BAF155 and BAF170 to Brg-1 appears to increase remodeling activity. Other complex subunits are thought to play regulatory roles. hSNF2L and hSNF2H both appear to be homologs of *Drosophila* ISWI, a Brm related ATPase that is present in chromatin remodeling complexes other than SWI/SNF, including the NURF (nucleosome remodeling factor).

CHROMOSOMAL LOCATION

Genetic locus: SMARCB1 (human) mapping to 22q11.23; Smarcb1 (mouse) mapping to 10 C1.

SOURCE

Ini1 (H-300) is a rabbit polyclonal antibody raised against amino acids 1-300 of Ini1 of human origin.

PRODUCT

Each vial contains 200 μ g IgG in 1.0 ml of PBS with < 0.1% sodium azide and 0.1% gelatin.

Available as TransCruz reagent for Gel Supershift and ChIP applications, sc-13055 X, 200 μ g/0.1 ml.

APPLICATIONS

Ini1 (H-300) is recommended for detection of Ini1 of mouse, rat and human origin by Western Blotting (starting dilution 1:200, dilution range 1:100-1:1000), immunoprecipitation [1-2 μ g per 100-500 μ g of total protein (1 ml of cell lysate)], immunofluorescence (starting dilution 1:50, dilution range 1:50-1:500), immunohistochemistry (including paraffin-embedded sections) (starting dilution 1:50, dilution range 1:50-1:500) and solid phase ELISA (starting dilution 1:30, dilution range 1:30-1:3000).

Ini1 (H-300) is also recommended for detection of Ini1 in additional species, including canine, bovine, porcine and avian.

Suitable for use as control antibody for Ini1 siRNA (h): sc-35668, Ini1 siRNA (m): sc-35670, Ini1 shRNA Plasmid (h): sc-35668-SH, Ini1 shRNA Plasmid (m): sc-35670-SH, Ini1 shRNA (h) Lentiviral Particles: sc-35668-V and Ini1 shRNA (m) Lentiviral Particles: sc-35670-V.

Ini1 (H-300) X TransCruz antibody is recommended for Gel Supershift and ChIP applications.

Molecular Weight of Ini1: 47 kDa.

Positive Controls: HeLa nuclear extract: sc-2120, Jurkat nuclear extract: sc-2132 or K-562 nuclear extract: sc-2130.

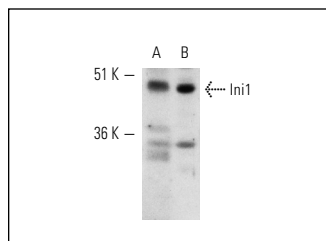
RESEARCH USE

For research use only, not for use in diagnostic procedures.

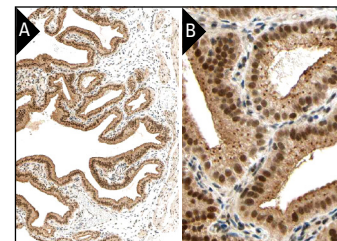
STORAGE

Store at 4° C, ****DO NOT FREEZE****. Stable for one year from the date of shipment. Non-hazardous. No MSDS required.

DATA



Ini1 (H-300): sc-13055. Western blot analysis of Ini1 expression in HeLa (A) and K-562 (B) nuclear extracts.



Ini1 (H-300): sc-13055. Immunoperoxidase staining of formalin fixed, paraffin-embedded human gall bladder tissue showing nuclear and cytoplasmic staining of glandular cells at low (A) and high (B) magnification. Kindly provided by The Swedish Human Protein Atlas (HPA) program.

SELECT PRODUCT CITATIONS

- Métivier, R., et al. 2003. Estrogen receptor- α directs ordered, cyclical, and combinatorial recruitment of cofactors on a natural target promoter. *Cell* 115: 751-763.
- Bagnasco, L., et al. 2007. Inhibition of a protein-protein interaction between INI1 and c-Myc by small peptidomimetic molecules inspired by Helix-1 of c-Myc: identification of a new target of potential antineoplastic interest. *FASEB J.* 21: 1256-1263.
- Arcaro, A., et al. 2007. Novel role for insulin as an autocrine growth factor for malignant brain tumour cells. *Biochem J.* 406: 57-66.
- Métivier, R., et al. 2008. Cyclical DNA methylation of a transcriptionally active promoter. *Nature* 452: 45-50.
- Iordanskiy, S.N., et al. 2009. Analysis of viral and cellular proteins in HIV-1 reverse transcription complexes by co-immunoprecipitation. *Methods Mol. Biol.* 485: 121-134.
- Oya, H., et al. 2009. Phosphorylation of Williams syndrome transcription factor by MAPK induces a switching between two distinct chromatin remodeling complexes. *J. Biol. Chem.* 284: 32472-32482.
- Tóth, L., et al. 2010. Primary rhabdoid cancer of the ileum: a case report and review of the literature. *Pathol. Res. Pract.* 206: 110-115.
- Cocché, M.C., et al. 2011. A complex karyotype in an atypical teratoid/rhabdoid tumor: case report and review of the literature. *J. Neurooncol.* 104: 375-380.



Try **Ini1 (A-5): sc-166165** or **Ini1 (F-4): sc-166164**, our highly recommended monoclonal alternatives to Ini1 (H-300). Also, for AC, HRP, FITC, PE, Alexa Fluor[®] 488 and Alexa Fluor[®] 647 conjugates, see **Ini1 (A-5): sc-166165**.