

# UGP2 (C-23): sc-130613

## BACKGROUND

UGP2 (UDP-glucose pyrophosphorylase 2), also known as UDPG, UGPP2, UDPGP2 or pHC379, is an evolutionarily conserved protein belonging to the UDPGP type 1 family of proteins. Localizing to the cytoplasm, UGP2 forms homo-oligomers and is believed to function as a glucosyl donor in cellular metabolic pathways. More specifically, UGP2 catalyzes the transfer of a glucose moiety from glucose-1-phosphate to UTP, producing a diphosphate and UDP-glucose. UDP-glucose is an essential precursor for the synthesis of polysaccharides; in liver and muscle, UDP-glucose is a precursor of glycogen, in liver UDP-glucose is also a precursor of UDP-glucuronate, and in lactating mammary gland UDP-glucose is converted to UDP-galactose and then to lactose.

## REFERENCES

- Shows, T.B., et al. 1978. Assignment of a molecular form of UDP-glucose pyrophosphorylase (UGPP2) to chromosome 2 in man. *Cytogenet. Cell Genet.* 22: 215-218.
- Peng, H.L. and Chang, H.Y. 1993. Cloning of a human liver UDP-glucose pyrophosphorylase cDNA by complementation of the bacterial galU mutation. *FEBS Lett.* 329: 153-158.
- Duggleby, R.G., et al. 1996. An improved assay for UDP-glucose pyrophosphorylase and other enzymes that have nucleotide products. *Experientia* 52: 568-572.
- Duggleby, R.G., et al. 1996. Sequence differences between human muscle and liver cDNAs for UDP-glucose pyrophosphorylase and kinetic properties of the recombinant enzymes expressed in *Escherichia coli*. *Eur. J. Biochem.* 235: 173-179.
- Chang, H.Y., et al. 1996. The importance of conserved residues in human liver UDP-glucose pyrophosphorylase. *Eur. J. Biochem.* 236: 723-728.
- Cheng, S.D., et al. 1997. Localization of the human UGP2 gene encoding the muscle isoform of UDP-glucose pyrophosphorylase to 2p13-p14 by fluorescence *in situ* hybridization. *Genomics* 39: 414-416.
- Lai, K. and Elsas, L.J. 2000. Overexpression of human UDP-glucose pyrophosphorylase rescues galactose-1-phosphate uridylyltransferase-deficient yeast. *Biochem. Biophys. Res. Commun.* 271: 392-400.
- Online Mendelian Inheritance in Man, OMIM™. 2002. Johns Hopkins University, Baltimore, MD. MIM Number: 191760. World Wide Web URL: <http://www.ncbi.nlm.nih.gov/omim/>
- Geisler, M., et al. 2004. Toward a blueprint for UDP-glucose pyrophosphorylase structure/function properties: homology-modeling analyses. *Plant Mol. Biol.* 56: 783-794.

## CHROMOSOMAL LOCATION

Genetic locus: UGP2 (human) mapping to 2p15.

## STORAGE

Store at 4° C, \*\*DO NOT FREEZE\*\*. Stable for one year from the date of shipment. Non-hazardous. No MSDS required.

## SOURCE

UGP2 (C-23) is a purified rabbit polyclonal antibody raised against a peptide mapping near the C-terminus of UGP2 of human origin.

## PRODUCT

Each vial contains 100 µg IgG in 1.0 ml PBS with < 0.1% sodium azide and 0.1% gelatin.

## APPLICATIONS

UGP2 (C-23) is recommended for detection of UGP2 of human origin by Western Blotting (starting dilution 1:200, dilution range 1:100-1:1000), immunoprecipitation [1-2 µg per 100-500 µg of total protein (1 ml of cell lysate)] and solid phase ELISA (starting dilution 1:30, dilution range 1:30-1:3000).

Suitable for use as control antibody for UGP2 siRNA (h): sc-94682, UGP2 shRNA Plasmid (h): sc-94682-SH and UGP2 shRNA (h) Lentiviral Particles: sc-94682-V.

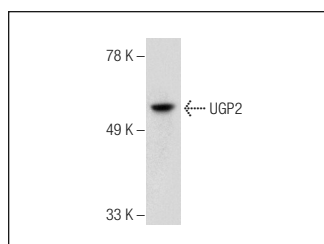
Molecular Weight of UGP2: 56 kDa.

Positive Controls: HeLa whole cell lysate: sc-2200 or Hep G2 cell lysate: sc-2227.

## RECOMMENDED SECONDARY REAGENTS

To ensure optimal results, the following support (secondary) reagents are recommended: 1) Western Blotting: use goat anti-rabbit IgG-HRP: sc-2004 (dilution range: 1:2000-1:100,000) or Cruz Marker™ compatible goat anti-rabbit IgG-HRP: sc-2030 (dilution range: 1:2000-1:5000), Cruz Marker™ Molecular Weight Standards: sc-2035, TBS Blotto A Blocking Reagent: sc-2333 and Western Blotting Luminol Reagent: sc-2048. 2) Immunoprecipitation: use Protein A/G PLUS-Agarose: sc-2003 (0.5 ml agarose/2.0 ml).

## DATA



UGP2 (C-23): sc-130613. Western blot analysis of UGP2 expression in mouse liver tissue extract.

## RESEARCH USE

For research use only, not for use in diagnostic procedures.

## PROTOCOLS

See our web site at [www.scbt.com](http://www.scbt.com) or our catalog for detailed protocols and support products.