

TBC1D1 (C-22): sc-130623

BACKGROUND

GTPase-activating proteins (GAPs) accelerate the intrinsic rate of GTP hydrolysis of Ras-related proteins, resulting in downregulation of their active form. TBC1D1 (TBC1 (tre-2/USP6, BUB2, Cdc16) domain family, member 1), also known as TBC1 or TBC, is a 1,168 amino acid protein that belongs to a family of proteins which share a 200 amino acid TBC domain that may convey a role in the regulation of cell growth and differentiation. Localized to the nucleus and containing one PID domain and one Rab-GAP TBC domain, TBC1D1 is thought to function as a GTPase-activating protein for Rab proteins, possibly participating in Rab-mediated cell cycle control and, ultimately, cellular differentiation. TBC1D1 is highly expressed in ovary, kidney and testis and is encoded by a gene which maps to human chromosome 4 and may be associated with an increased susceptibility to severe obesity.

REFERENCES

- White, R.A., Pasztor, L.M., Richardson, P.M. and Zon, L.I. 2000. The gene encoding TBC1D1 with homology to the tre-2/USP6 oncogene, BUB2, and Cdc16 maps to mouse chromosome 5 and human chromosome 4. *Cytogenet. Cell Genet.* 89: 272-275.
- Stone, S., Abkevich, V., Russell, D.L., Riley, R., Timms, K., Tran, T., Trem, D., Frank, D., Jammulapati, S., Neff, C.D., Iliev, D., Gress, R., He, G., Frech, G.C., Adams, T.D., Skolnick, M.H., Lanchbury, J.S., Gutin, A., Hunt, S.C. and Shattuck, D. 2006. TBC1D1 is a candidate for a severe obesity gene and evidence for a gene/gene interaction in obesity predisposition. *Hum. Mol. Genet.* 15: 2709-2720.
- Koumanov, F. and Holman, G.D. 2007. Thrifty TBC1D1 and TBC1D4 proteins link signalling and membrane trafficking pathways. *Biochem. J.* 403: E9-E11.
- Roach, W.G., Chavez, J.A., Muinea, C.P. and Lienhard, G.E. 2007. Substrate specificity and effect on GLUT4 translocation of the Rab GTPase-activating protein TBC1D1. *Biochem. J.* 403: 353-358.
- Sakamoto, K. and Holman, G.D. 2008. Emerging role for AS160/TBC1D4 and TBC1D1 in the regulation of GLUT4 traffic. *Am. J. Physiol. Endocrinol. Metab.* 295: E29-E37.
- Zhou, Q.L., Jiang, Z.Y., Holik, J., Chawla, A., Hagan, G.N., Leszyk, J. and Czech, M.P. 2008. Akt substrate TBC1D1 regulates GLUT1 expression through the mTOR pathway in 3T3-L1 adipocytes. *Biochem. J.* 411: 647-655.
- Meyre, D., Farge, M., Lecoq, C., Proenca, C., Durand, E., Allegaert, F., Tichet, J., Marre, M., Balkau, B., Weill, J., Delplanque, J. and Froguel, P. 2008. R125W coding variant in TBC1D1 confers risk for familial obesity and contributes to linkage on chromosome 4p14 in the French population. *Hum. Mol. Genet.* 17: 1798-1802.
- Funai, K. and Cartee, G.D. 2008. Contraction-stimulated glucose transport in rat skeletal muscle is sustained despite reversal of increased PAS-phosphorylation of AS160 and TBC1D1. *J. Appl. Physiol.* 105: 1788-1795.

STORAGE

Store at 4° C, ****DO NOT FREEZE****. Stable for one year from the date of shipment. Non-hazardous. No MSDS required.

CHROMOSOMAL LOCATION

Genetic locus: TBC1D1 (human) mapping to 4p14.

SOURCE

TBC1D1 (C-22) is a purified rabbit polyclonal antibody raised against a 22 amino acid peptide near the C-terminus of TBC1D1 of human origin.

PRODUCT

Each vial contains 50 µg IgG in 500 µl PBS with < 0.1% sodium azide and 0.1% gelatin.

APPLICATIONS

TBC1D1 (C-22) is recommended for detection of TBC1D1 of human origin by Western Blotting (starting dilution 1:200, dilution range 1:100-1:1000) and immunoprecipitation [1-2 µg per 100-500 µg of total protein (1 ml of cell lysate)].

Suitable for use as control antibody for TBC1D1 siRNA (h): sc-88926, TBC1D1 shRNA Plasmid (h): sc-88926-SH and TBC1D1 shRNA (h) Lentiviral Particles: sc-88926-V.

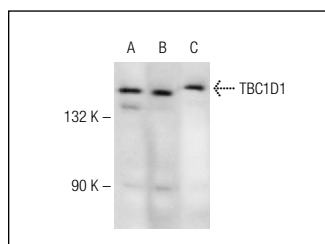
Molecular Weight of TBC1D1: 133 kDa.

Positive Controls: BJAB whole cell lysate: sc-2207, Daudi cell lysate: sc-2415 or Ramos cell lysate: sc-2216.

RECOMMENDED SECONDARY REAGENTS

To ensure optimal results, the following support (secondary) reagents are recommended: 1) Western Blotting: use goat anti-rabbit IgG-HRP: sc-2004 (dilution range: 1:2000-1:100,000) or Cruz Marker™ compatible goat anti-rabbit IgG-HRP: sc-2030 (dilution range: 1:2000-1:5000), Cruz Marker™ Molecular Weight Standards: sc-2035, TBS Blotto A Blocking Reagent: sc-2333 and Western Blotting Luminol Reagent: sc-2048. 2) Immunoprecipitation: use Protein A/G PLUS-Agarose: sc-2003 (0.5 ml agarose/2.0 ml).

DATA



TBC1D1 (C-22): sc-130623. Western blot analysis of TBC1D1 expression in Ramos (A), BJAB (B) and Daudi (C) whole cell lysates.

RESEARCH USE

For research use only, not for use in diagnostic procedures.