

# GALK2 (V-25): sc-130761

## BACKGROUND

Galactose kinase (GALK1), also often designated galactokinase, is important in the first step of the galactose metabolism pathway. GALK1, which belongs to the GHMP kinase family of proteins, is a crucial enzyme for galactose metabolism, specifically converting  $\alpha$ -D-galactose to galactose 1-phosphate. Defects in the gene encoding GALK1 can cause galactosemia II, an autosomal recessive disorder characterized by congenital cataracts during infancy, often within the first two weeks of life. In the adult population, galactosemia II can cause presenile cataracts that are secondary to accumulation of galactitol in the lens of the eye. A second gene, GALK2, encodes an enzyme with greater activity against GalNAc than galactose. GALK2 has been implicated in the salvage pathway for the reutilization of free GalNAc derived from the degradation of complex carbohydrates.

## REFERENCES

- Okano, Y., et al. 2001. A genetic factor for age-related cataract: identification and characterization of a novel galactokinase variant, "Osaka," in Asians. *Am. J. Hum. Genet.* 68: 1036-1042.
- Hunter, M., et al. 2001. Novel mutations in the GALK1 gene in patients with galactokinase deficiency. *Hum. Mutat.* 17: 77-78.
- Timson, D.J., et al. 2003. Functional analysis of disease-causing mutations in human galactokinase. *Eur. J. Biochem.* 270: 1767-1774.
- Sangiulio, F., et al. 2004. Biochemical characterization of two GALK1 mutations in patients with galactokinase deficiency. *Hum. Mutat.* 23: 396.
- Ross, K.L., et al. 2004. Differential roles of the Leloir pathway enzymes and metabolites in defining galactose sensitivity in yeast. *Mol. Genet. Metab.* 83: 103-116.
- Holden, H.M., et al. 2004. Galactokinase: structure, function and role in type II galactosemia. *Cell. Mol. Life Sci.* 61: 2471-2484.
- Thoden, J.B., et al. 2005. Molecular structure of human galactokinase: implications for type II galactosemia. *J. Biol. Chem.* 280: 9662-9670.
- Thoden, J.B., et al. 2005. The molecular architecture of human N-acetyl-galactosamine kinase. *J. Biol. Chem.* 280: 32784-32791.

## CHROMOSOMAL LOCATION

Genetic locus: GALK2 (human) mapping to 15q21.1.

## SOURCE

GALK2 (V-25) is a purified rabbit polyclonal antibody raised against a peptide mapping near the C-terminus of GALK2 of human origin.

## PRODUCT

Each vial contains 100  $\mu$ g IgG in 1.0 ml PBS with < 0.1% sodium azide and 0.1% gelatin.

## STORAGE

Store at 4° C, **\*\*DO NOT FREEZE\*\***. Stable for one year from the date of shipment. Non-hazardous. No MSDS required.

## APPLICATIONS

GALK2 (V-25) is recommended for detection of GALK2 of human origin by Western Blotting (starting dilution 1:200, dilution range 1:100-1:1000), immunoprecipitation [1-2  $\mu$ g per 100-500  $\mu$ g of total protein (1 ml of cell lysate)] and solid phase ELISA (starting dilution 1:30, dilution range 1:30-1:3000).

Suitable for use as control antibody for GALK2 siRNA (h): sc-90002, GALK2 shRNA Plasmid (h): sc-90002-SH and GALK2 shRNA (h) Lentiviral Particles: sc-90002-V.

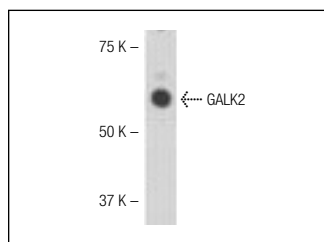
Molecular Weight of GALK2: 61 kDa.

Positive Controls: HL-60 whole cell lysate: sc-2209.

## RECOMMENDED SECONDARY REAGENTS

To ensure optimal results, the following support (secondary) reagents are recommended: 1) Western Blotting: use goat anti-rabbit IgG-HRP: sc-2004 (dilution range: 1:2000-1:100,000) or Cruz Marker™ compatible goat anti-rabbit IgG-HRP: sc-2030 (dilution range: 1:2000-1:5000), Cruz Marker™ Molecular Weight Standards: sc-2035, TBS Blotto A Blocking Reagent: sc-2333 and Western Blotting Luminol Reagent: sc-2048. 2) Immunoprecipitation: use Protein A/G PLUS-Agarose: sc-2003 (0.5 ml agarose/2.0 ml).

## DATA



GALK2 (V-25): sc-130761. Western blot analysis of GALK2 expression in HL-60 whole cell lysate.

## RESEARCH USE

For research use only, not for use in diagnostic procedures.

## PROTOCOLS

See our web site at [www.scbt.com](http://www.scbt.com) or our catalog for detailed protocols and support products.