

GGA3 (X-22): sc-130768

BACKGROUND

The GGA family of proteins (Golgi-localized, γ -Adaptin ear-containing, ARF-binding proteins) are ubiquitous coat proteins that facilitate the trafficking of soluble proteins from the *trans*-Golgi network (TGN) to endosomes/lysosomes by means of interactions with TGN-sorting receptors, ARF (ADP-ribosylation factor), and clathrin. Members of the GGA family, GGA1, GGA2 (also known as VEAR) and GGA3, are multi-domain proteins that bind mannose 6-phosphate receptors (MPRs). GGAs have modular structures with an N-terminal VHS (VPS27, Hrs and STAM) domain followed by a GAT (GGA and Tom1) domain, a connecting hinge segment and a C-terminal GAE (γ -Adaptin ear) domain. The amino-terminal VHS domains of GGAs form complexes with the cytoplasmic domains of sorting receptors by recognizing acidic-cluster di-leucine (ACLL) sequences. The human GGA3 gene maps to chromosome 17 and encodes a 723 amino acid protein that shares 46% sequence identity with GGA1 and 38% with GGA2.

REFERENCES

- Hirst, J., Lui, W.W., Bright, N.A., Totty, N., Seaman, M.N. and Robinson, M.S. 2000. A family of proteins with γ -Adaptin and VHS domains that facilitate trafficking between the *trans*-Golgi network and the vacuole/lysosome. *J. Cell Biol.* 149: 67-80.
- Dell'Angelica, E.C., Puertollano, R., Mullins, C., Aguilar, R.C., Vargas, J.D., Hartnell, L.M. and Bonifacio, J.S. 2000. GGAs: a family of ADP ribosylation factor-binding proteins related to adaptors and associated with the Golgi complex. *J. Cell Biol.* 149: 81-94.
- Shiba, T., Takatsu, H., Nogi, T., Matsugaki, N., Kawasaki, M., Igarashi, N., Suzuki, M., Kato, R., Earnest, T., Nakayama, K. and Wakatsuki, S. 2002. Structural basis for recognition of acidic-cluster dileucine sequence by GGA1. *Nature* 415: 937-941.
- Doray, B., Ghosh, P., Griffith, J., Geuze, H.J. and Kornfeld, S. 2002. Cooperation of GGAs and AP-1 in packaging MPRs at the *trans*-Golgi network. *Science* 297: 1700-1703.

CHROMOSOMAL LOCATION

Genetic locus: GGA3 (human) mapping to 17q25.1.

SOURCE

GGA3 (X-22) is a purified rabbit polyclonal antibody raised against a peptide mapping near the N-terminus of GGA3 of human origin.

PRODUCT

Each vial contains 100 μ g IgG in 1.0 ml PBS with < 0.1% sodium azide and 0.1% gelatin.

STORAGE

Store at 4° C, ****DO NOT FREEZE****. Stable for one year from the date of shipment. Non-hazardous. No MSDS required.

RESEARCH USE

For research use only, not for use in diagnostic procedures.

APPLICATIONS

GGA3 (X-22) is recommended for detection of GGA3 of human origin by Western Blotting (starting dilution 1:200, dilution range 1:100-1:1000), immunoprecipitation [1-2 μ g per 100-500 μ g of total protein (1 ml of cell lysate)] and solid phase ELISA (starting dilution 1:30, dilution range 1:30-1:3000).

Suitable for use as control antibody for GGA3 siRNA (h): sc-41171, GGA3 shRNA Plasmid (h): sc-41171-SH and GGA3 shRNA (h) Lentiviral Particles: sc-41171-V.

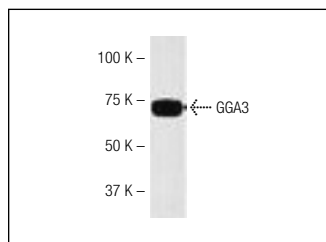
Molecular Weight of GGA3: 90 kDa.

Positive Controls: 293 whole cell lysate.

RECOMMENDED SECONDARY REAGENTS

To ensure optimal results, the following support (secondary) reagents are recommended: 1) Western Blotting: use goat anti-rabbit IgG-HRP: sc-2004 (dilution range: 1:2000-1:100,000) or Cruz Marker™ compatible goat anti-rabbit IgG-HRP: sc-2030 (dilution range: 1:2000-1:5000), Cruz Marker™ Molecular Weight Standards: sc-2035, TBS Blotto A Blocking Reagent: sc-2333 and Western Blotting Luminol Reagent: sc-2048. 2) Immunoprecipitation: use Protein A/G PLUS-Agarose: sc-2003 (0.5 ml agarose/2.0 ml).

DATA



GGA3 (X-22): sc-130768. Western blot analysis of GGA3 expression in 293 whole cell lysate.

PROTOCOLS

See our web site at www.scbt.com or our catalog for detailed protocols and support products.