

glypican-6 (X-24): sc-130770

BACKGROUND

The glypicans are a family of glycosylphosphatidylinositol-anchored heparan sulfate proteoglycans that are involved in the control of cell growth and division. Glypican-6, also known as GPC6, is a 555 amino acid protein that exists as both a lipid-anchored cell membrane peptide, as well as a secreted protein that is released into the extracellular space. Expressed ubiquitously with highest expression in liver, kidney, colon, ovary and small intestine, glypican-6 functions as a cell surface receptor that is thought to bind to a variety of proteins, including growth factors, proteases and extracellular matrix proteins. The gene encoding glypican-6 maps to human chromosome 13, which houses over 400 genes, such as BRCA2 and RB1, and comprises nearly 4% of the human genome.

REFERENCES

1. Paine-Saunders, S., Viviano, B.L. and Saunders, S. 1999. GPC6, a novel member of the glypican gene family, encodes a product structurally related to GPC4 and is colocalized with GPC5 on human chromosome 13. *Genomics* 57: 455-458.
2. Veugeliers, M., De Cat, B., Ceulemans, H., Bruystens, A.M., Coomans, C., Dürr, J., Vermeesch, J., Marynen, P. and David, G. 1999. Glypican-6, a novel member of the glypican family of cell surface heparan sulfate proteoglycans. *J. Biol. Chem.* 274: 26968-26977.
3. Online Mendelian Inheritance in Man, OMIM™. 2000. Johns Hopkins University, Baltimore, MD. MIM Number: 604404. World Wide Web URL: <http://www.ncbi.nlm.nih.gov/omim/>
4. Filmus, J. 2001. Glypicans in growth control and cancer. *Glycobiology* 11: 19R-23R.
5. De Cat, B. and David, G. 2001. Developmental roles of the glypicans. *Semin. Cell Dev. Biol.* 12: 117-125.
6. Bassett, J.H., Swinhoe, R., Chassande, O., Samarut, J. and Williams, G.R. 2006. Thyroid hormone regulates heparan sulfate proteoglycan expression in the growth plate. *Endocrinology* 147: 295-305.
7. Filmus, J., Capurro, M. and Rast, J. 2008. Glypicans. *Genome Biol.* 9: 224.

CHROMOSOMAL LOCATION

Genetic locus: GPC6 (human) mapping to 13q31.3.

SOURCE

glypican-6 (X-24) is a purified rabbit polyclonal antibody raised against a peptide mapping near the N-terminus of glypican-6 of human origin.

PRODUCT

Each vial contains 100 µg IgG in 1.0 ml PBS with < 0.1% sodium azide and 0.1% gelatin.

STORAGE

Store at 4° C, ****DO NOT FREEZE****. Stable for one year from the date of shipment. Non-hazardous. No MSDS required.

APPLICATIONS

glypican-6 (X-24) is recommended for detection of glypican-6 of human origin by Western Blotting (starting dilution 1:200, dilution range 1:100-1:1000), immunoprecipitation [1-2 µg per 100-500 µg of total protein (1 ml of cell lysate)] and solid phase ELISA (starting dilution 1:30, dilution range 1:30-1:3000).

Suitable for use as control antibody for glypican-6 siRNA (h): sc-75152, glypican-6 shRNA Plasmid (h): sc-75152-SH and glypican-6 shRNA (h) Lentiviral Particles: sc-75152-V.

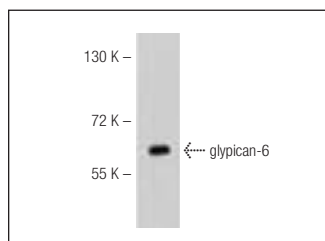
Molecular Weight of glypican-6: 60 kDa.

Positive Controls: K-562 whole cell lysate: sc-2203.

RECOMMENDED SECONDARY REAGENTS

To ensure optimal results, the following support (secondary) reagents are recommended: 1) Western Blotting: use goat anti-rabbit IgG-HRP: sc-2004 (dilution range: 1:2000-1:100,000) or Cruz Marker™ compatible goat anti-rabbit IgG-HRP: sc-2030 (dilution range: 1:2000-1:5000), Cruz Marker™ Molecular Weight Standards: sc-2035, TBS Blotto A Blocking Reagent: sc-2333 and Western Blotting Luminol Reagent: sc-2048. 2) Immunoprecipitation: use Protein A/G PLUS-Agarose: sc-2003 (0.5 ml agarose/2.0 ml).

DATA



glypican-6 (X-24): sc-130770. Western blot analysis of glypican-6 expression in K-562 whole cell lysate.

RESEARCH USE

For research use only, not for use in diagnostic procedures.

PROTOCOLS

See our web site at www.scbt.com or our catalog for detailed protocols and support products.