

KPI-2 (D-25): sc-130796

BACKGROUND

KPI-2 (kinase/phosphatase/inhibitor 2), also known as BREK, LMR2, cprk, AATYK2 or LMTK2 (lemur tyrosine kinase 2), is a 1,503 amino acid single-pass membrane protein belonging to the protein kinase superfamily and the protein tyrosine kinase family. Mainly expressed in skeletal muscle, and weakly in brain and pancreas, KPI-2 contains N-terminal transmembrane helices and a long C-terminal cytoplasmic tail with serine/threonine/tyrosine kinase activity. KPI-2 may be involved in nerve growth factor (NGF)-Trk A signaling, endosomal membrane trafficking and spermatogenesis. KPI-2 localizes to cytoplasmic membrane vesicles and to perinuclear recycling endosomes. KPI-2 is critical for the transition of endocytosed membrane vesicles from early endosomes to recycling endosomes. The gene encoding KPI-2 is a potential therapeutic target for prostate cancer.

REFERENCES

1. Wang, H. and Brautigan, D.L. 2002. A novel transmembrane Ser/Thr kinase complexes with protein phosphatase-1 and inhibitor-2. *J. Biol. Chem.* 277: 49605-49612.
2. Kawa, S., et al. 2004. Involvement of BREK, a serine/threonine kinase enriched in brain, in NGF signalling. *Genes Cells* 9: 219-232.
3. Wang, H. and Brautigan, D.L. 2006. Peptide microarray analysis of substrate specificity of the transmembrane Ser/Thr kinase KPI-2 reveals reactivity with cystic fibrosis transmembrane conductance regulator and phosphorylase. *Mol. Cell. Proteomics* 5: 2124-2130.
4. Kawa, S., et al. 2006. Azoospermia in mice with targeted disruption of the Brek/Lmtk2 (brain-enriched kinase/lemur tyrosine kinase 2) gene. *Proc. Natl. Acad. Sci. USA* 103: 19344-19349.
5. Chibalina, M.V., et al. 2007. Myosin VI and its interacting protein LMTK2 regulate tubule formation and transport to the endocytic recycling compartment. *J. Cell Sci.* 120: 4278-4288.
6. Inoue, T., et al. 2008. BREK/LMTK2 is a Myosin VI-binding protein involved in endosomal membrane trafficking. *Genes Cells* 13: 483-495.
7. Eeles, R.A., et al. 2008. Multiple newly identified loci associated with prostate cancer susceptibility. *Nat. Genet.* 40: 316-321.
8. Guy, M., et al. 2009. Identification of new genetic risk factors for prostate cancer. *Asian J. Androl.* 11: 49-55.
9. Sakugawa, N., et al. 2009. LMTK2 and PARP-2 gene polymorphism and azoospermia secondary to meiotic arrest. *J. Assist. Reprod. Genet.* 26: 545-552.

CHROMOSOMAL LOCATION

Genetic locus: LMTK2 (human) mapping to 7q21.3.

SOURCE

KPI-2 (D-25) is a purified rabbit polyclonal antibody raised against a peptide mapping within an internal region of KPI-2 of human origin.

RESEARCH USE

For research use only, not for use in diagnostic procedures.

PRODUCT

Each vial contains 100 µg IgG in 1.0 ml PBS with < 0.1% sodium azide and 0.1% gelatin.

APPLICATIONS

KPI-2 (D-25) is recommended for detection of KPI-2 of human origin by Western Blotting (starting dilution 1:200, dilution range 1:100-1:1000), immunoprecipitation [1-2 µg per 100-500 µg of total protein (1 ml of cell lysate)] and solid phase ELISA (starting dilution 1:30, dilution range 1:30-1:3000).

Suitable for use as control antibody for KPI-2 siRNA (h): sc-75397, KPI-2 shRNA Plasmid (h): sc-75397-SH and KPI-2 shRNA (h) Lentiviral Particles: sc-75397-V.

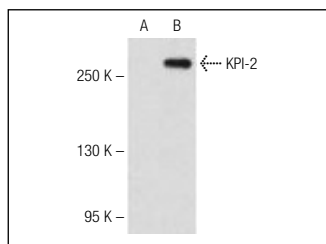
Molecular Weight of KPI-2: greater than 250 kDa.

Positive Controls: human KPI-2 transfected (B) 293 whole cell lysates or human skeletal muscle extract: sc-363766.

RECOMMENDED SECONDARY REAGENTS

To ensure optimal results, the following support (secondary) reagents are recommended: 1) Western Blotting: use goat anti-rabbit IgG-HRP: sc-2004 (dilution range: 1:2000-1:100,000) or Cruz Marker™ compatible goat anti-rabbit IgG-HRP: sc-2030 (dilution range: 1:2000-1:5000), Cruz Marker™ Molecular Weight Standards: sc-2035, TBS Blotto A Blocking Reagent: sc-2333 and Western Blotting Luminol Reagent: sc-2048. 2) Immunoprecipitation: use Protein A/G PLUS-Agarose: sc-2003 (0.5 ml agarose/2.0 ml).

DATA



KPI-2 (D-25): sc-130796. Western blot analysis of KPI-2 expression in non-transfected (A) and human KPI-2 transfected (B) 293 whole cell lysates.

STORAGE

Store at 4° C, ****DO NOT FREEZE****. Stable for one year from the date of shipment. Non-hazardous. No MSDS required.



Try **KPI-2 (D-11): sc-398396** or **KPI-2 (H-9): sc-514237**, our highly recommended monoclonal alternatives to KPI-2 (D-25).