

# LAF4 (E-22): sc-130798

## BACKGROUND

LAF4 (lymphoid nuclear protein related to AF4), also known as AFF3 (AF4/FMR2 family, member 3), is a 1,226 amino acid nuclear protein that is preferentially expressed in lymphoid tissues and is thought to function as a transcriptional activator. Through its ability to interact with and bind to double-stranded DNA, LAF4 may be involved in lymphoid development and oncogenesis. The gene encoding LAF4 maps to human chromosome 2, which houses over 1,400 genes and comprises nearly 8% of the human genome. Harlequin ichthyosis, a rare and morbid skin deformity, is associated with mutations in the ABCA12 gene, while the lipid metabolic disorder sitosterolemia is associated with defects in the ABCG5 and ABCG8 genes. Additionally, an extremely rare recessive genetic disorder, Alström syndrome, is caused by mutations in the ALMS1 gene, which maps to chromosome 2.

## REFERENCES

- Ma, C. and Staudt, L.M. 1996. LAF4 encodes a lymphoid nuclear protein with transactivation potential that is homologous to AF-4, the gene fused to MLL in t(4;11) leukemias. *Blood* 87: 734-745.
- Liao, X., et al. 1996. LAF4 maps to mouse chromosome 1 and human chromosome 2q11.2-q12. *Mamm. Genome* 7: 467-468.
- von Bergh, A.R., et al. 2002. LAF4, an AF4-related gene, is fused to MLL in infant acute lymphoblastic leukemia. *Genes Chromosomes Cancer* 35: 92-96.
- Bruch, J., et al. 2003. Occurrence of an MLL/LAF4 fusion gene caused by the insertion ins(11;2)(q23;q11.2q11.2) in an infant with acute lymphoblastic leukemia. *Genes Chromosomes Cancer* 37: 106-109.
- Hiwatari, M., et al. 2003. Fusion of an AF4-related gene, LAF4, to MLL in childhood acute lymphoblastic leukemia with t(2;11)(q11;q23). *Oncogene* 22: 2851-2855.
- To, M.D., et al. 2005. LAF4 is aberrantly expressed in human breast cancer. *Int. J. Cancer* 115: 568-574.
- Steichen-Gersdorf, E., et al. 2008. Triangular tibia with fibular aplasia associated with a microdeletion on 2q11.2 encompassing LAF4. *Clin. Genet.* 74: 560-565.
- Online Mendelian Inheritance in Man, OMIM<sup>™</sup>. 2009. Johns Hopkins University, Baltimore, MD. MIM Number: 601464. World Wide Web URL: <http://www.ncbi.nlm.nih.gov/omim/>

## CHROMOSOMAL LOCATION

Genetic locus: AFF3 (human) mapping to 2q11.2.

## SOURCE

LAF4 (E-22) is a purified rabbit polyclonal antibody raised against a peptide mapping near the C-terminus of LAF4 of human origin.

## PRODUCT

Each vial contains 100 µg IgG in 1.0 ml PBS with < 0.1% sodium azide and 0.1% gelatin.

## APPLICATIONS

LAF4 (E-22) is recommended for detection of LAF4 of human origin by Western Blotting (starting dilution 1:200, dilution range 1:100-1:1000), immunoprecipitation [1-2 µg per 100-500 µg of total protein (1 ml of cell lysate)] and solid phase ELISA (starting dilution 1:30, dilution range 1:30-1:3000).

Suitable for use as control antibody for LAF4 siRNA (h): sc-94401, LAF4 shRNA Plasmid (h): sc-94401-SH and LAF4 shRNA (h) Lentiviral Particles: sc-94401-V.

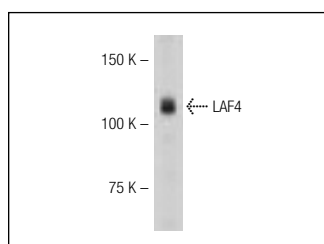
Molecular Weight of LAF4: 135 kDa.

Positive Controls: human placenta tissue.

## RECOMMENDED SECONDARY REAGENTS

To ensure optimal results, the following support (secondary) reagents are recommended: 1) Western Blotting: use goat anti-rabbit IgG-HRP: sc-2004 (dilution range: 1:2000-1:100,000) or Cruz Marker<sup>™</sup> compatible goat anti-rabbit IgG-HRP: sc-2030 (dilution range: 1:2000-1:5000), Cruz Marker<sup>™</sup> Molecular Weight Standards: sc-2035, TBS Blotto A Blocking Reagent: sc-2333 and Western Blotting Luminol Reagent: sc-2048. 2) Immunoprecipitation: use Protein A/G PLUS-Agarose: sc-2003 (0.5 ml agarose/2.0 ml).

## DATA



LAF4 (E-22): sc-130798. Western blot analysis of LAF4 expression in human placenta tissue extract.

## STORAGE

Store at 4° C, **\*\*DO NOT FREEZE\*\***. Stable for one year from the date of shipment. Non-hazardous. No MSDS required.

## RESEARCH USE

For research use only, not for use in diagnostic procedures.

## PROTOCOLS

See our web site at [www.scbt.com](http://www.scbt.com) or our catalog for detailed protocols and support products.