

syncytin (Z-25): sc-130888

BACKGROUND

Syncytin, also known as ERVWE1 (endogenous retroviral family W, env(C7), member 1) is a human endogenous retrovirus family W (HERV-W) envelope protein that is expressed in placental syncytiotrophoblast and is involved in fusion of the cytotrophoblast cells to form the multinucleated syncytial layer of the placenta. Syncytin is an envelope protein after *in vitro* transcription-translation and undergoes glycosylation. It is predicted to undergo posttranslational cleavage into a surface (SU) subunit and a transmembrane (TM) subunit. Syncytin is similar to other retroviral envelope proteins in possessing a Furin cleavage site that separates the surface (SU) and transmembrane (TM) proteins, which form a heterodimer. Northern blot analysis has been shown to detect 8.0-, 3.1- and 1.3-kb HERV-W transcripts only in placenta. Syncytin expression can increase three-fold in astrocytes and glial cells within acute demyelinating lesions of patients with multiple sclerosis compared to controls.

REFERENCES

- Blond, J.L., et al. 1999. Molecular characterization and placental expression of HERV-W, a new human endogenous retrovirus family. *J. Virol.* 73: 1175-1185.
- Mi, S., et al. 2000. Syncytin is a captive retroviral envelope protein involved in human placental morphogenesis. *Nature* 403: 785-789.
- Lee, X., et al. 2001. Downregulation of placental syncytin expression and abnormal protein localization in pre-eclampsia. *Placenta* 22: 808-812.
- Keith, J.C., Jr., et al. 2002. Placental syncytin expression in normal and preeclamptic pregnancies. *Am. J. Obstet. Gynecol.* 187: 1122-1123.
- Smallwood, A., et al. 2003. Temporal regulation of the expression of syncytin (HERV-W), maternally imprinted PEG10, and SGCE in human placenta. *Biol. Reprod.* 69: 286-293.
- Antony, J.M., et al. 2004. Human endogenous retrovirus glycoprotein-mediated induction of redox reactants causes oligodendrocyte death and demyelination. *Nat. Neurosci.* 7: 1088-1095.
- Chang, C., et al. 2004. Functional characterization of the placental fusogenic membrane protein syncytin. *Biol. Reprod.* 71: 1956-1962.
- Dupressoir, A., et al. 2005. Syncytin A and syncytin B, two fusogenic placenta-specific murine envelope genes of retroviral origin conserved in Muridae. *Proc. Natl. Acad. Sci. USA* 102: 725-730.

CHROMOSOMAL LOCATION

Genetic locus: ERVWE1 (human) mapping to 7q21.2.

SOURCE

syncytin (Z-25) is a purified rabbit polyclonal antibody raised against a peptide mapping within an internal region of syncytin of human origin.

STORAGE

Store at 4° C, ****DO NOT FREEZE****. Stable for one year from the date of shipment. Non-hazardous. No MSDS required.

PRODUCT

Each vial contains 100 µg IgG in 1.0 ml PBS with < 0.1% sodium azide and 0.1% gelatin.

APPLICATIONS

syncytin (Z-25) is recommended for detection of syncytin of human origin by Western Blotting (starting dilution 1:200, dilution range 1:100-1:1000), immunoprecipitation [1-2 µg per 100-500 µg of total protein (1 ml of cell lysate)] and solid phase ELISA (starting dilution 1:30, dilution range 1:30-1:3000).

Suitable for use as control antibody for syncytin siRNA (h): sc-60054, syncytin shRNA Plasmid (h): sc-60054-SH and syncytin shRNA (h) Lentiviral Particles: sc-60054-V.

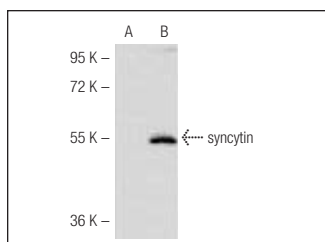
Molecular Weight of syncytin: 60 kDa.

Molecular Weight of glycosylated syncytin: 80 kDa.

RECOMMENDED SECONDARY REAGENTS

To ensure optimal results, the following support (secondary) reagents are recommended: 1) Western Blotting: use goat anti-rabbit IgG-HRP: sc-2004 (dilution range: 1:2000-1:100,000) or Cruz Marker™ compatible goat anti-rabbit IgG-HRP: sc-2030 (dilution range: 1:2000-1:5000), Cruz Marker™ Molecular Weight Standards: sc-2035, TBS Blotto A Blocking Reagent: sc-2333 and Western Blotting Luminol Reagent: sc-2048. 2) Immunoprecipitation: use Protein A/G PLUS-Agarose: sc-2003 (0.5 ml agarose/2.0 ml).

DATA



syncytin (Z-25): sc-130888. Western blot analysis of syncytin expression in non-transfected (A) and human syncytin transfected (B) 293 whole cell lysates.

RESEARCH USE

For research use only, not for use in diagnostic procedures.

PROTOCOLS

See our web site at www.scbt.com or our catalog for detailed protocols and support products.