

# MRI1 (A-24): sc-130927

## BACKGROUND

The initiation of protein synthesis in eukaryotic cells is regulated by interactions between protein initiation factors and RNA molecules. The eukaryotic initiation complex is composed of three subunits, designated eIF2 $\alpha$ , eIF2 $\beta$  and eIF2 $\gamma$  (eukaryotic translation initiation factor 2  $\alpha$ ,  $\beta$  and  $\gamma$ , respectively), all of which work in concert to form a ternary complex with GTP and tRNA in the early stages of protein synthesis. 2410018C20Rik, also known as Mri1 (methylthioribose-1-phosphate isomerase), is a 369 amino acid murine protein that belongs to the eIF2 $\beta$  family of transcription initiation factors, suggesting a role in transcriptional regulation. The gene encoding MRI1 maps to mouse chromosome 8.

## REFERENCES

- Ray, M.K., Chakraborty, A., Datta, B., Chattopadhyay, A., Saha, D., Bose, A., Kinzy, T.G., Wu, S., Hileman, R.E. and Merrick, W.C. 1993. Characteristics of the eukaryotic initiation factor 2 associated 67 kDa polypeptide. *Biochemistry* 32: 5151-5159.
- Gaspar, N.J., Kinzy, T.G., Scherer, B.J., Hümbelin, M., Hershey, J.W. and Merrick, W.C. 1994. Translation initiation factor eIF-2. Cloning and expression of the human cDNA encoding the gamma-subunit. *J. Biol. Chem.* 269: 3415-3422.
- Ben-Asouli, Y., Banai, Y., Hauser, H. and Kaempfer, R. 2000. Recognition of 5'-terminal TAR structure in human immunodeficiency virus-1 mRNA by eukaryotic translation initiation factor 2. *Nucleic Acids Res.* 28: 1011-1018.
- Suragani, R.N., Kamindla, R., Ehtesham, N.Z. and Ramaiah, K.V. 2005. Interaction of recombinant human eIF2 subunits with eIF2 $\beta$  and eIF2 $\alpha$  kinases. *Biochem. Biophys. Res. Commun.* 338: 1766-1772.
- Mikami, S., Masutani, M., Sonenberg, N., Yokoyama, S. and Imataka, H. 2006. An efficient mammalian cell-free translation system supplemented with translation factors. *Protein Expr. Purif.* 46: 348-357.
- Tirosh, S., Elkobi, A., Rosenblum, K. and Meiri, N. 2007. A role for eukaryotic translation initiation factor 2 $\beta$  (eIF2 $\beta$ ) in taste memory consolidation and in thermal control establishment during the critical period for sensory development. *Dev. Neurobiol.* 67: 728-739.

## CHROMOSOMAL LOCATION

Genetic locus: 2410018C20Rik (mouse) mapping to 8 C3.

## SOURCE

MRI1 (A-24) is a Protein A purified rabbit polyclonal antibody raised against synthetic MRI1 peptide of mouse origin.

## STORAGE

Store at 4° C, **\*\*DO NOT FREEZE\*\***. Stable for one year from the date of shipment. Non-hazardous. No MSDS required.

## PROTOCOLS

See our web site at [www.scbt.com](http://www.scbt.com) or our catalog for detailed protocols and support products.

## PRODUCT

Each vial contains 100  $\mu$ g IgG in 1.0 ml PBS with < 0.1% sodium azide, 0.1% gelatin and < 0.02% sucrose.

## APPLICATIONS

MRI1 (A-24) is recommended for detection of MRI1 of mouse origin by Western Blotting (starting dilution 1:200, dilution range 1:100-1:1000), immunoprecipitation [1-2  $\mu$ g per 100-500  $\mu$ g of total protein (1 ml of cell lysate)] and solid phase ELISA (starting dilution 1:30, dilution range 1:30-1:3000).

Suitable for use as control antibody for MRI1 siRNA (m): sc-108742, MRI1 shRNA Plasmid (m): sc-108742-SH and MRI1 shRNA (m) Lentiviral Particles: sc-108742-V.

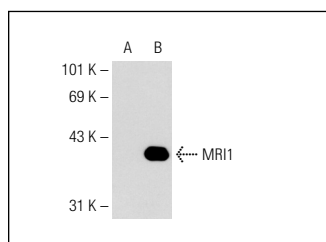
Molecular Weight of MRI1: 39 kDa.

Positive Controls: MRI1 (m2): 293T Lysate: sc-117928.

## RECOMMENDED SECONDARY REAGENTS

To ensure optimal results, the following support (secondary) reagents are recommended: 1) Western Blotting: use goat anti-rabbit IgG-HRP: sc-2004 (dilution range: 1:2000-1:100,000) or Cruz Marker™ compatible goat anti-rabbit IgG-HRP: sc-2030 (dilution range: 1:2000-1:5000), Cruz Marker™ Molecular Weight Standards: sc-2035, TBS Blotto A Blocking Reagent: sc-2333 and Western Blotting Luminol Reagent: sc-2048. 2) Immunoprecipitation: use Protein A/G PLUS-Agarose: sc-2003 (0.5 ml agarose/2.0 ml).

## DATA



MRI1 (A-24): sc-130927. Western blot analysis of MRI1 expression in non-transfected: sc-117752 (A) and mouse MRI1 transfected: sc-117928 (B) 293T whole cell lysates.

## RESEARCH USE

For research use only, not for use in diagnostic procedures.