

Barhl2 (L-23): sc-130971

BACKGROUND

BarH2 is a homeobox containing protein required for the fate determination of external sensory organs in *Drosophila*. BarH2 (BarH-like 2 homeobox protein), also known as MBH1 in rat (mammalian homolog of BarH), is highly related to BarH2. It is a member of the BAR homeobox family of highly conserved proteins and contains one homeobox DNA-binding domain. BarH2 localizes to the nucleus and is expressed in the central nervous system as well as in mature and differentiating amacrine, horizontal and ganglion cells of the retina. BarH2 plays a role in regulating the specification of glycinergic amacrine cells and controls horizontal cell differentiation. BarH2 may also be involved in the regulation of neural basic helix-loop-helix genes.

REFERENCES

1. Bulfone, A., Menguzzato, E., Broccoli, V., Marchitello, A., Gattuso, C., Mariani, M., Consalez, G.G., Martinez, S., Ballabio, A. and Banfi, S. 2000. Barhl1, a gene belonging to a new subfamily of mammalian homeobox genes, is expressed in migrating neurons of the CNS. *Hum. Mol. Genet.* 9: 1443-1452.
2. Lim, J. and Choi, K.W. 2003. Bar homeodomain proteins are anti-proneural in the *Drosophila* eye: transcriptional repression of atonal by Bar prevents ectopic retinal neurogenesis. *Development* 130: 5965-5974.
3. Mo, Z., Li, S., Yang, X. and Xiang, M. 2004. Role of the Barhl2 homeobox gene in the specification of glycinergic amacrine cells. *Development* 131: 1607-1618.
4. Poggi, L., Vottari, T., Barsacchi, G., Wittbrodt, J. and Vignali, R. 2004. The homeobox gene Xbh1 cooperates with proneural genes to specify ganglion cell fate within the *Xenopus* neural retina. *Development* 131: 2305-2315.
5. Offner, N., Duval, N., Jamrich, M. and Durand, B. 2005. The pro-apoptotic activity of a vertebrate Bar-like homeobox gene plays a key role in patterning the *Xenopus* neural plate by limiting the number of chordin- and shh-expressing cells. *Development* 132: 1807-1818.
6. Saba, R., Johnson, J.E. and Saito, T. 2005. Commissural neuron identity is specified by a homeodomain protein, Mbh1, that is directly downstream of Math1. *Development* 132: 2147-2155.
7. Olson, L.E., Zhang, J., Taylor, H., Rose, D.W. and Rosenfeld, M.G. 2005. Barx2 functions through distinct corepressor classes to regulate hair follicle remodeling. *Proc. Natl. Acad. Sci. USA* 102: 3708-3713.
8. Balse, E., Tessier, L.H., Forster, V., Roux, M.J., Sahel, J.A. and Picaud, S. 2006. Glycine receptors in a population of adult mammalian cones. *J. Physiol.* 571: 391-401.
9. Kawauchi, D., Taniguchi, H., Watanabe, H., Saito, T. and Murakami, F. 2006. Direct visualization of nucleogenesis by precerebellar neurons: involvement of ventricle-directed, radial fibre-associated migration. *Development* 133: 1113-1123.

CHROMOSOMAL LOCATION

Genetic locus: BARHL2 (human) mapping to 1p22.2.

SOURCE

Barhl2 (L-23) is an affinity purified rabbit polyclonal antibody raised against synthetic Barhl2 peptide of human origin.

PRODUCT

Each vial contains 50 µg IgG in 500 µl PBS with < 0.1% sodium azide, 0.1% gelatin and < 0.02% sucrose.

APPLICATIONS

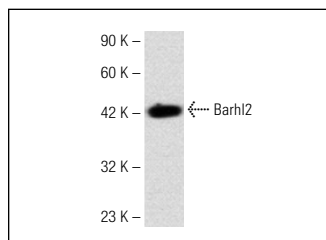
Barhl2 (L-23) is recommended for detection of Barhl2 of human and rat origin by Western Blotting (starting dilution 1:200, dilution range 1:100-1:1000), immunoprecipitation [1-2 µg per 100-500 µg of total protein (1 ml of cell lysate)], immunofluorescence (starting dilution 1:50, dilution range 1:50-1:500), immunohistochemistry (including paraffin-embedded sections) (starting dilution 1:50, dilution range 1:50-1:500) and solid phase ELISA (starting dilution 1:30, dilution range 1:30-1:3000).

Suitable for use as control antibody for Barhl2 siRNA (h): sc-62010, Barhl2 shRNA Plasmid (h): sc-62010-SH and Barhl2 shRNA (h) Lentiviral Particles: sc-62010-V.

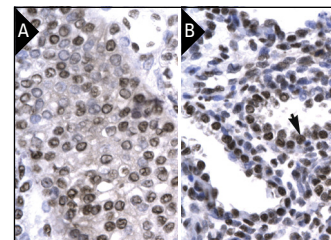
Molecular Weight of Barhl2: 42 kDa.

Positive Controls: Hep G2 cell lysate: sc-2227, human kidney tissue or human lung tissue.

DATA



Barhl2 (L-23): sc-130971. Western blot analysis of Barhl2 expression in Hep G2 whole cell lysate.



Barhl2 (L-23): sc-130971. Immunoperoxidase staining of formalin-fixed, paraffin-embedded human kidney tissue (A) showing nuclear and cytoplasmic localization and formalin-fixed, paraffin-embedded human lung tissue (B) showing nuclear localization.

STORAGE

Store at 4° C, **DO NOT FREEZE**. Stable for one year from the date of shipment. Non-hazardous. No MSDS required.

RESEARCH USE

For research use only, not for use in diagnostic procedures.

PROTOCOLS

See our web site at www.scbt.com or our catalog for detailed protocols and support products.