



BSMAP (P-24): sc-130982

BACKGROUND

BSMAP (brain-specific membrane-anchored protein), also known as TMEM59L (transmembrane protein 59-like) or C19orf4, is a 342 amino acid type-I membrane glycoprotein that localizes to organelle membranes and belongs to the TMEM59 family. Expressed at high levels in brain tissue, BSMAP is thought to play a role in brain function and central nervous system activity. The gene encoding BSMAP maps to human chromosome 19, which consists of over 63 million bases, houses approximately 1,400 genes and is recognized for having the greatest gene density of the human chromosomes. It is the genetic home for a number of immunoglobulin (Ig) superfamily members, including the killer cell and leukocyte Ig-like receptors, a number of ICAMs, the CEACAM and PSG family and Fc receptors (FcRs).

REFERENCES

- Zimmermann, W., Weber, B., Ortlieb, B., Rudert, F., Schempp, W., Fiebig, H.H., Shively, J.E., von Kleist, S. and Thompson, J.A. 1988. Chromosomal localization of the carcinoembryonic antigen gene family and differential expression in various tumors. *Cancer Res.* 48: 2550-2554.
- Elson, G.C., de Coignac, A.B., Aubry, J.P., Delneste, Y., Magistrelli, G., Holzwarth, J., Bonnefoy, J.Y. and Gauchat, J.F. 1999. BSMAP, a novel protein expressed specifically in the brain whose gene is localized on chromosome 19p12. *Biochem. Biophys. Res. Commun.* 264: 55-62.
- LaPoint, S.F., Patel, U. and Rubio, A. 2000. Cerebral autosomal dominant arteriopathy with subcortical infarcts and leukoencephalopathy (CADASIL). *Adv. Anat. Pathol.* 7: 307-321.
- Trettel, F., Mantuano, E., Calabresi, V., Veneziano, L., Olsen, A.S., Georgescu, A., Gordon, L., Sabbadini, G., Frontali, M. and Jodice C. 2000. A fine physical map of the CACNA1A gene region on 19p13.1-p13.2 chromosome. *Gene* 241: 45-50.
- Buchet-Poyau, K., Mehenni, H., Radhakrishna, U. and Antonarakis, S.E. 2002. Search for the second Peutz-Jeghers syndrome locus: exclusion of the STK13, PRKCG, KLK10, and PSCD2 genes on chromosome 19 and the STK11IP gene on chromosome 2. *Cytogenet. Genome Res.* 97: 171-178.
- Moodie, S.J., Norman, P.J., King, A.L., Fraser, J.S., Curtis, D., Ellis, H.J., Vaughan, R.W. and Ciclitira, P.J. 2002. Analysis of candidate genes on chromosome 19 in coeliac disease: an association study of the KIR and LILR gene clusters. *Eur. J. Immunogenet.* 29: 287-291.
- Grimwood, J., Gordon, L.A., Olsen, A., Terry, A., Schmutz, J., Lamerdin, J., Hellsten, U., Goodstein, D., Couronne, O., Tran-Gyamfi, M., Aerts, A., Altherr, M., Ashworth, L., Bajorek, E., Black, S., Branscomb, E., et al. 2004. The DNA sequence and biology of human chromosome 19. *Nature* 428: 529-535.
- Parham, P. 2005. Immunogenetics of killer cell immunoglobulin-like receptors. *Mol. Immunol.* 42: 459-462.

STORAGE

Store at 4° C, ****DO NOT FREEZE****. Stable for one year from the date of shipment. Non-hazardous. No MSDS required.

CHROMOSOMAL LOCATION

Genetic locus: TMEM59L (human) mapping to 19p13.11.

SOURCE

BSMAP (P-24) is a Protein A purified rabbit polyclonal antibody raised against synthetic BSMAP peptide of human origin.

PRODUCT

Each vial contains 100 µg IgG in 1.0 ml PBS with < 0.1% sodium azide, 0.1% gelatin and < 0.02% sucrose.

APPLICATIONS

BSMAP (P-24) is recommended for detection of BSMAP of human origin by Western Blotting (starting dilution 1:200, dilution range 1:100-1:1000), immunoprecipitation [1-2 µg per 100-500 µg of total protein (1 ml of cell lysate)] and solid phase ELISA (starting dilution 1:30, dilution range 1:30-1:3000).

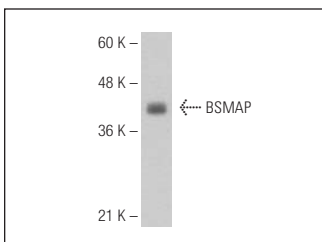
Suitable for use as control antibody for BSMAP siRNA (h): sc-97876, BSMAP shRNA Plasmid (h): sc-97876-SH and BSMAP shRNA (h) Lentiviral Particles: sc-97876-V.

Molecular Weight of BSMAP: 40 kDa.

RECOMMENDED SECONDARY REAGENTS

To ensure optimal results, the following support (secondary) reagents are recommended: 1) Western blotting: use goat anti-rabbit IgG-HRP: sc-2004 (dilution range: 1:2000-1:100,000) or Cruz Marker™ compatible goat anti-rabbit IgG-HRP: sc-2030 (dilution range: 1:2000-1:5000), Cruz Marker™ Molecular Weight Standards: sc-2035, TBS Blotto A Blocking Reagent: sc-2333 and Western Blotting Luminol Reagent: sc-2048. 2) Immunoprecipitation: use Protein A/G PLUS-Agarose: sc-2003 (0.5 ml agarose/2.0 ml).

DATA



BSMAP (P-24): sc-130982. Western blot analysis of human BSMAP transfected 293T whole cell lysate.

RESEARCH USE

For research use only, not for use in diagnostic procedures.

PROTOCOLS

See our web site at www.scbt.com or our catalog for detailed protocols and support products.