

C15orf27 (Q-25): sc-130988

BACKGROUND

Encoding more than 700 genes, chromosome 15 is made up of approximately 106 million base pairs and is about 3% of the human genome. Angelman and Prader-Willi syndromes are associated with loss of function or deletion of genes in the 15q11-q13 region. In the case of Angelman syndrome, this loss is due to inactivity of the maternal 15q11-q13 encoded UBE3A gene in the brain by either chromosomal deletion or mutation. In cases of Prader-Willi syndrome, there is a partial or complete deletion of this region from the paternal copy of chromosome 15. Tay-Sachs disease is a lethal disorder associated with mutations of the HEXA gene, which is encoded by chromosome 15. Marfan syndrome is associated with chromosome 15 through the FBN1 gene. The C15orf27 gene product has been provisionally designated C15orf27 pending further characterization.

REFERENCES

- Cachón-González, M.B., Wang, S.Z., Lynch, A., Ziegler, R., Cheng, S.H. and Cox, T.M. 2006. Effective gene therapy in an authentic model of Tay-Sachs-related diseases. *Proc. Natl. Acad. Sci. USA* 103: 10373-10378.
- Zody, M.C., Garber, M., Sharpe, T., Young, S.K., Rowen, L., O'Neill, K., Whittaker, C.A., Kamal, M., Chang, J.L., Cuomo, C.A., Dewar, K., Fitzgerald, M.G., Kodira, C.D., Madan, A., Qin, S., Yang, X., et al. 2006. Analysis of the DNA sequence and duplication history of human chromosome 15. *Nature* 440: 671-675.
- Diene, G., Postel-Vinay, A., Pinto, G., Polak, M. and Tauber, M. 2007. The Prader-Willi syndrome. *Ann. Endocrinol.* 68: 129-137.
- Lalande, M. and Calciano, M.A. 2007. Molecular epigenetics of Angelman syndrome. *Cell. Mol. Life Sci.* 64: 947-960.
- Maegawa, G.H., Tropak, M., Buttner, J., Stockley, T., Kok, F., Clarke, J.T. and Mahuran, D.J. 2007. Pyrimethamine as a potential pharmacological chaperone for late-onset forms of GM₂ gangliosidosis. *J. Biol. Chem.* 282: 9150-9161.
- Makoff, A.J. and Flomen, R.H. 2007. Detailed analysis of 15q11-q14 sequence corrects errors and gaps in the public access sequence to fully reveal large segmental duplications at breakpoints for Prader-Willi, Angelman, and inv dup(15) syndromes. *Genome Biol.* 8: R114
- Ramirez, F. and Dietz, H.C. 2007. Fibrillin-rich microfibrils: Structural determinants of morphogenetic and homeostatic events. *J. Cell. Physiol.* 213: 326-330.

CHROMOSOMAL LOCATION

Genetic locus: C15orf27 (human) mapping to 15q24.2; A118078 (mouse) mapping to 9 B.

STORAGE

Store at 4°C, ****DO NOT FREEZE****. Stable for one year from the date of shipment. Non-hazardous. No MSDS required.

RESEARCH USE

For research use only, not for use in diagnostic procedures.

SOURCE

C15orf27 (Q-25) is an affinity purified rabbit polyclonal antibody raised against synthetic C15orf27 peptide of human origin.

PRODUCT

Each vial contains 50 µg IgG in 500 µl PBS with < 0.1% sodium azide, 0.1% gelatin and < 0.02% sucrose.

APPLICATIONS

C15orf27 (Q-25) is recommended for detection of C15orf27 of mouse, rat and human origin by Western Blotting (starting dilution 1:200, dilution range 1:100-1:1000), immunoprecipitation [1-2 µg per 100-500 µg of total protein (1 ml of cell lysate)] and solid phase ELISA (starting dilution 1:30, dilution range 1:30-1:3000).

Suitable for use as control antibody for C15orf27 siRNA (h): sc-90289, A118078 siRNA (m): sc-140921, C15orf27 shRNA Plasmid (h): sc-90289-SH, A118078 shRNA Plasmid (m): sc-140921-SH, C15orf27 shRNA (h) Lentiviral Particles: sc-90289-V and A118078 shRNA (m) Lentiviral Particles: sc-140921-V.

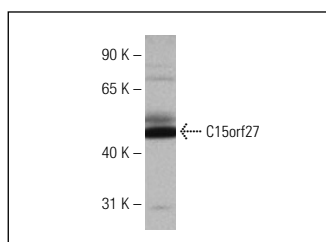
Molecular Weight of C15orf27: 58 kDa.

Positive Controls: human heart tissue extract.

RECOMMENDED SECONDARY REAGENTS

To ensure optimal results, the following support (secondary) reagents are recommended: 1) Western Blotting: use goat anti-rabbit IgG-HRP: sc-2004 (dilution range: 1:2000-1:100,000) or Cruz Marker™ compatible goat anti-rabbit IgG-HRP: sc-2030 (dilution range: 1:2000-1:5000), Cruz Marker™ Molecular Weight Standards: sc-2035, TBS Blotto A Blocking Reagent: sc-2333 and Western Blotting Luminol Reagent: sc-2048. 2) Immunoprecipitation: use Protein A/G PLUS-Agarose: sc-2003 (0.5 ml agarose/2.0 ml).

DATA



C15orf27 (Q-25): sc-130988. Western blot analysis of C15orf27 expression in human heart tissue extract.

PROTOCOLS

See our web site at www.scbt.com or our catalog for detailed protocols and support products.