

Siglec-11 (L-13): sc-131070

BACKGROUND

Two families of mammalian lectin-like adhesion molecules, the selectins and the sialoadhesins, bind glycoconjugate ligands in a sialic acid-dependent manner. The sialic acid-binding immunoglobulin superfamily lectins, designated Siglecs or sialoadhesins, recognize sialylated ligands and play a key role in mediating sialic-acid dependent binding to cells. Siglec-11 (sialic acid binding Ig-like Lectin 11) is a 686 amino acid single-pass type I membrane protein that contains one Ig-like V-type domain and 3 Ig-like C₂-type domains. Expressed by macrophages and present in various tissues, Siglec-11 functions as an adhesion molecule that preferentially binds to α -2,8-linked sialic acid and mediated sialic acid binding to cells. Siglec-11 exists as multiple alternatively spliced isoforms and is subject to post-translational phosphorylation on tyrosine residues.

REFERENCES

- Angata, T., et al. 2002. Cloning and characterization of human Siglec-11. A recently evolved signaling that can interact with SHP-1 and SHP-2 and is expressed by tissue macrophages, including brain microglia. *J. Biol. Chem.* 277: 24466-24474.
- Hayakawa, T., et al. 2005. A human-specific gene in microglia. *Science* 309: 1693.
- Online Mendelian Inheritance in Man, OMIM[™]. 2005. Johns Hopkins University, Baltimore, MD. MIM Number: 607157. World Wide Web URL: <http://www.ncbi.nlm.nih.gov/omim/>
- von Gunten, S. and Bochner, B.S. 2008. Basic and clinical immunology of siglecs. *Ann. N.Y. Acad. Sci.* 1143: 61-82.
- Crocker, P.R. and Redelinghuys, P. 2008. Siglecs as positive and negative regulators of the immune system. *Biochem. Soc. Trans.* 36: 1467-1471.
- Cao, H., et al. 2008. Siglec-16 encodes a DAP12-associated receptor expressed in macrophages that evolved from its inhibitory counterpart Siglec-11 and has functional and non-functional alleles in humans. *Eur. J. Immunol.* 38: 2303-2315.
- Angata, T. 2008. Functions and molecular evolution of siglecs, a family of sialic acid receptor proteins. *Tanpakushitsu Kakusan Koso* 53: 733-738.

CHROMOSOMAL LOCATION

Genetic locus: SIGLEC11 (human) mapping to 19q13.33.

SOURCE

Siglec-11 (L-13) is an affinity purified goat polyclonal antibody raised against a peptide mapping within a C-terminal cytoplasmic domain of Siglec-11 of human origin.

PRODUCT

Each vial contains 200 μ g IgG in 1.0 ml of PBS with < 0.1% sodium azide and 0.1% gelatin.

Blocking peptide available for competition studies, sc-131070 P, (100 μ g peptide in 0.5 ml PBS containing < 0.1% sodium azide and 0.2% BSA).

APPLICATIONS

Siglec-11 (L-13) is recommended for detection of Siglec-11 of human origin by Western Blotting (starting dilution 1:200, dilution range 1:100-1:1000), immunoprecipitation [1-2 μ g per 100-500 μ g of total protein (1 ml of cell lysate)], immunofluorescence (starting dilution 1:50, dilution range 1:50-1:500) and solid phase ELISA (starting dilution 1:30, dilution range 1:30-1:3000).

Suitable for use as control antibody for Siglec-11 siRNA (h): sc-97277, Siglec-11 shRNA Plasmid (h): sc-97277-SH and Siglec-11 shRNA (h) Lentiviral Particles: sc-97277-V.

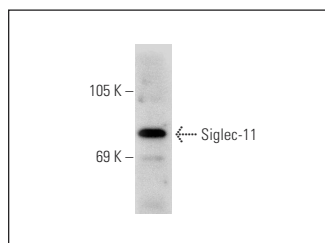
Molecular Weight of Siglec-11: 100 kDa.

Positive Controls: ES-2 cell lysate: sc-24674, Daudi cell lysate: sc-2415 or MCF7 whole cell lysate: sc-2206.

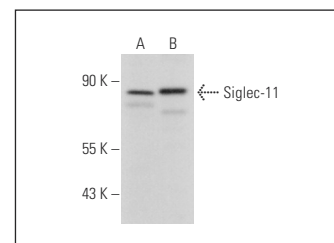
RECOMMENDED SECONDARY REAGENTS

To ensure optimal results, the following support (secondary) reagents are recommended: 1) Western Blotting: use donkey anti-goat IgG-HRP: sc-2020 (dilution range: 1:2000-1:100,000) or Cruz Marker[™] compatible donkey anti-goat IgG-HRP: sc-2033 (dilution range: 1:2000-1:5000), Cruz Marker[™] Molecular Weight Standards: sc-2035, TBS Blotto A Blocking Reagent: sc-2333 and Western Blotting Luminol Reagent: sc-2048. 2) Immunoprecipitation: use Protein A/G PLUS-Agarose: sc-2003 (0.5 ml agarose/2.0 ml). 3) Immunofluorescence: use donkey anti-goat IgG-FITC: sc-2024 (dilution range: 1:100-1:400) or donkey anti-goat IgG-TR: sc-2783 (dilution range: 1:100-1:400) with UltraCruz[™] Mounting Medium: sc-24941.

DATA



Siglec-11 (L-13): sc-131070. Western blot analysis of Siglec-11 expression in ES-2 whole cell lysate.



Siglec-11 (L-13): sc-131070. Western blot analysis of Siglec-11 expression in Daudi (A) and MCF7 (B) whole cell lysates.

STORAGE

Store at 4° C, ****DO NOT FREEZE****. Stable for one year from the date of shipment. Non-hazardous. No MSDS required.

RESEARCH USE

For research use only, not for use in diagnostic procedures.

PROTOCOLS

See our web site at www.scbt.com or our catalog for detailed protocols and support products.