

# GPR32 (E-12): sc-131158

## BACKGROUND

G protein-coupled receptors (GPRs), also known as seven transmembrane receptors, heptahelical receptors or 7TM receptors, comprise a superfamily of proteins that play a role in many different stimulus-response pathways. GPRs translate extracellular signals into intracellular signals (a process called G protein activation) and they respond to a variety of signaling molecules, such as hormones and neurotransmitters. GPR32 (probable G protein-coupled receptor 32) is a 356 amino acid member of the G protein-coupled receptor 1 family. Localized to the cell membrane, GPR32 is an orphan receptor. The gene that encodes GPR32 maps to human chromosome 19q13.33. Human chromosome 19 consists of around 63 million bases with over 1,400 genes, making up over 2% of human genomic DNA. Chromosome 19 includes a diversity of interesting genes and is recognized for having the greatest gene density of the human chromosomes. It is the genetic home for a number of immunoglobulin superfamily members including the killer cell and leukocyte Ig-like receptors, a number of ICAMs, the CEACAM and PSG family, and Fc $\alpha$  receptors.

## REFERENCES

- Zimmermann, W., et al. 1988. Chromosomal localization of the carcinoembryonic antigen gene family and differential expression in various tumors. *Cancer Res.* 48: 2550-2554.
- Sawzdargo, M., et al. 1997. A cluster of four novel human G protein-coupled receptor genes occurring in close proximity to CD22 gene on chromosome 19q13.1. *Biochem. Biophys. Res. Commun.* 239: 543-547.
- Marchese, A., et al. 1998. Cloning genes encoding receptors related to chemoattractant receptors. *Genomics* 50: 281-286.
- LaPoint, S.F., et al. 2000. Cerebral autosomal dominant arteriopathy with subcortical infarcts and leukoencephalopathy (CADASIL). *Adv. Anat. Pathol.* 7: 307-321.
- Trettel, F., et al. 2000. A fine physical map of the CACNA1A gene region on 19p13.1-p13.2 chromosome. *Gene* 241: 45-50.
- Lee, D.K., et al. 2001. Discovery and mapping of ten novel G protein-coupled receptor genes. *Gene* 275: 83-91.
- Grimwood, J., et al. 2004. The DNA sequence and biology of human chromosome 19. *Nature* 428: 529-535.
- Parham, P. 2005. Immunogenetics of killer cell immunoglobulin-like receptors. *Mol. Immunol.* 42: 459-462.

## CHROMOSOMAL LOCATION

Genetic locus: GPR32 (human) mapping to 19q13.33.

## SOURCE

GPR32 (E-12) is an affinity purified goat polyclonal antibody raised against a peptide mapping within a cytoplasmic domain of GPR32 of human origin.

## STORAGE

Store at 4° C, **\*\*DO NOT FREEZE\*\***. Stable for one year from the date of shipment. Non-hazardous. No MSDS required.

## PRODUCT

Each vial contains 200  $\mu$ g IgG in 1.0 ml of PBS with < 0.1% sodium azide and 0.1% gelatin.

Blocking peptide available for competition studies, sc-131158 P, (100  $\mu$ g peptide in 0.5 ml PBS containing < 0.1% sodium azide and 0.2% BSA).

## APPLICATIONS

GPR32 (E-12) is recommended for detection of GPR32 of human origin by Western Blotting (starting dilution 1:200, dilution range 1:100-1:1000), immunoprecipitation [1-2  $\mu$ g per 100-500  $\mu$ g of total protein (1 ml of cell lysate)], immunofluorescence (starting dilution 1:50, dilution range 1:50-1:500) and solid phase ELISA (starting dilution 1:30, dilution range 1:30-1:3000); non cross-reactive with other GPR family members.

Suitable for use as control antibody for GPR32 siRNA (h): sc-97378, GPR32 shRNA Plasmid (h): sc-97378-SH and GPR32 shRNA (h) Lentiviral Particles: sc-97378-V.

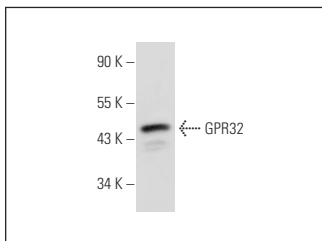
Molecular Weight of GPR32: 40 kDa.

Positive Controls: A549 cell lysate: sc-2413.

## RECOMMENDED SECONDARY REAGENTS

To ensure optimal results, the following support (secondary) reagents are recommended: 1) Western Blotting: use donkey anti-goat IgG-HRP: sc-2020 (dilution range: 1:2000-1:100,000) or Cruz Marker™ compatible donkey anti-goat IgG-HRP: sc-2033 (dilution range: 1:2000-1:5000), Cruz Marker™ Molecular Weight Standards: sc-2035, TBS Blotto A Blocking Reagent: sc-2333 and Western Blotting Luminol Reagent: sc-2048. 2) Immunoprecipitation: use Protein A/G PLUS-Agarose: sc-2003 (0.5 ml agarose/2.0 ml). 3) Immunofluorescence: use donkey anti-goat IgG-FITC: sc-2024 (dilution range: 1:100-1:400) or donkey anti-goat IgG-TR: sc-2783 (dilution range: 1:100-1:400) with UltraCruz™ Mounting Medium: sc-24941.

## DATA



GPR32 (E-12): sc-131158. Western blot analysis of GPR32 expression in A549 whole cell lysate.

## RESEARCH USE

For research use only, not for use in diagnostic procedures.

## PROTOCOLS

See our web site at [www.scbt.com](http://www.scbt.com) or our catalog for detailed protocols and support products.