

OR56B1 (T-12): sc-131269

BACKGROUND

Olfactory receptors interact with odorant molecules in the nose to initiate a neuronal response that leads to the perception of smell. While they share a seven transmembrane domain structure with many neurotransmitter and hormone receptors, olfactory receptors are responsible for the recognition and transduction of odorant signals. The olfactory receptor gene family is the largest in the genome. OR56B1 (olfactory receptor 56B1), also known as OR11-65, is a 324 amino acid multi-pass membrane protein that belongs to the G protein-coupled receptor 1 family. The gene that encodes OR56B1 consists of nearly 1,000 bases and maps to human chromosome 11p15.4. Chromosome 11 houses over 1,400 genes and comprises nearly 4% of the human genome. Jervell and Lange-Nielsen syndrome, Jacobsen syndrome, Niemann-Pick disease, hereditary angioedema and Smith-Lemli-Opitz syndrome are associated with defects in genes that map to chromosome 11.

REFERENCES

1. Fabiani, J.E., et al. 2000. Hereditary angioedema. Long-term follow-up of 88 patients. Experience of the Argentine Allergy and Immunology Institute. *Allergol. Immunopathol.* 28: 267-271.
2. Jira, P.E., et al. 2003. Smith-Lemli-Opitz syndrome and the DHCR7 gene. *Ann. Hum. Genet.* 67: 269-280.

CHROMOSOMAL LOCATION

Genetic locus: OR56B1 (human) mapping to 11p15.4.

SOURCE

OR56B1 (T-12) is an affinity purified goat polyclonal antibody raised against a peptide mapping within an extracellular domain of OR56B1 of human origin.

PRODUCT

Each vial contains 200 µg IgG in 1.0 ml of PBS with < 0.1% sodium azide and 0.1% gelatin.

Blocking peptide available for competition studies, sc-131269 P, (100 µg peptide in 0.5 ml PBS containing < 0.1% sodium azide and 0.2% BSA).

APPLICATIONS

OR56B1 (T-12) is recommended for detection of OR56B1 of human origin by Western Blotting (starting dilution 1:200, dilution range 1:100-1:1000), immunoprecipitation [1-2 µg per 100-500 µg of total protein (1 ml of cell lysate)], immunofluorescence (starting dilution 1:50, dilution range 1:50-1:500) and solid phase ELISA (starting dilution 1:30, dilution range 1:30-1:3000); may cross-react with family member OR56B2.

OR56B1 (T-12) is also recommended for detection of OR56B1 in additional species, including equine and canine.

Suitable for use as control antibody for OR56B1 siRNA (h): sc-96279, OR56B1 shRNA Plasmid (h): sc-96279-SH and OR56B1 shRNA (h) Lentiviral Particles: sc-96279-V.

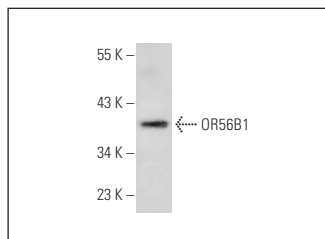
Molecular Weight of OR56B1: 36 kDa.

Positive Controls: Jurkat whole cell lysate: sc-2204.

RECOMMENDED SECONDARY REAGENTS

To ensure optimal results, the following support (secondary) reagents are recommended: 1) Western Blotting: use donkey anti-goat IgG-HRP: sc-2020 (dilution range: 1:2000-1:100,000) or Cruz Marker™ compatible donkey anti-goat IgG-HRP: sc-2033 (dilution range: 1:2000-1:5000), Cruz Marker™ Molecular Weight Standards: sc-2035, TBS Blotto A Blocking Reagent: sc-2333 and Western Blotting Luminol Reagent: sc-2048. 2) Immunoprecipitation: use Protein A/G PLUS-Agarose: sc-2003 (0.5 ml agarose/2.0 ml). 3) Immunofluorescence: use donkey anti-goat IgG-FITC: sc-2024 (dilution range: 1:100-1:400) or donkey anti-goat IgG-TR: sc-2783 (dilution range: 1:100-1:400) with UltraCruz™ Mounting Medium: sc-24941.

DATA



OR56B1 (T-12): sc-131269. Western blot analysis of OR56B1 expression in Jurkat whole cell lysate.

STORAGE

Store at 4° C, **DO NOT FREEZE**. Stable for one year from the date of shipment. Non-hazardous. No MSDS required.

RESEARCH USE

For research use only, not for use in diagnostic procedures.

PROTOCOLS

See our web site at www.scbt.com or our catalog for detailed protocols and support products.

MONOS
Satisfaction
Guaranteed

Try **OR56B1 (E-9): sc-515497**, our highly recommended monoclonal alternative to OR56B1 (T-12).