

Ribosomal Protein L19 (T-12): sc-131342

BACKGROUND

Ribosomes, the organelles that catalyze protein synthesis, are composed of a small subunit (40S) and a large subunit (60S) that consist of over 80 distinct ribosomal proteins. Mammalian ribosomal proteins are encoded by multi-gene families that contain processed pseudogenes and one functional intron-containing gene within their coding regions. Ribosomal Protein L19 is a 196 amino acid protein that is a component of the 60S subunit. Localized to the cytoplasm, Ribosomal Protein L19 belongs to the L19e family of ribosomal proteins and functions in protein synthesis. The expression of Ribosomal Protein L19 is upregulated in breast cancers and its overexpression is used as a prognostic marker for prostate cancer. Like most ribosomal proteins, Ribosomal Protein L19 exists as multiple processed pseudogenes that are scattered throughout the genome.

CHROMOSOMAL LOCATION

Genetic locus: RPL19 (human) mapping to 17q12; Rpl19 (mouse) mapping to 11 D.

SOURCE

Ribosomal Protein L19 (T-12) is an affinity purified goat polyclonal antibody raised against a peptide mapping within an internal region of Ribosomal Protein L19 of human origin.

PRODUCT

Each vial contains 200 µg IgG in 1.0 ml of PBS with < 0.1% sodium azide and 0.1% gelatin.

Blocking peptide available for competition studies, sc-131342 P, (100 µg peptide in 0.5 ml PBS containing < 0.1% sodium azide and 0.2% BSA).

APPLICATIONS

Ribosomal Protein L19 (T-12) is recommended for detection of Ribosomal Protein L19 of mouse, rat and human origin by Western Blotting (starting dilution 1:200, dilution range 1:100-1:1000), immunoprecipitation [1-2 µg per 100-500 µg of total protein (1 ml of cell lysate)], immunofluorescence (starting dilution 1:50, dilution range 1:50-1:500) and solid phase ELISA (starting dilution 1:30, dilution range 1:30-1:3000); non cross-reactive with other RPL family members.

Ribosomal Protein L19 (T-12) is also recommended for detection of Ribosomal Protein L19 in additional species, including bovine.

Suitable for use as control antibody for Ribosomal Protein L19 siRNA (h): sc-93859, Ribosomal Protein L19 siRNA (m): sc-152901, Ribosomal Protein L19 shRNA Plasmid (h): sc-93859-SH, Ribosomal Protein L19 shRNA Plasmid (m): sc-152901-SH, Ribosomal Protein L19 shRNA (h) Lentiviral Particles: sc-93859-V and Ribosomal Protein L19 shRNA (m) Lentiviral Particles: sc-152901-V.

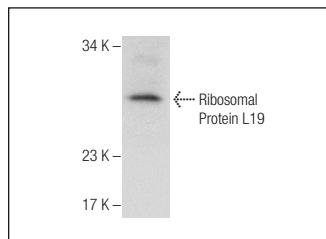
Molecular Weight of Ribosomal Protein L19: 23 kDa.

Positive Controls: K-562 whole cell lysate: sc-2203.

RECOMMENDED SECONDARY REAGENTS

To ensure optimal results, the following support (secondary) reagents are recommended: 1) Western Blotting: use donkey anti-goat IgG-HRP: sc-2020 (dilution range: 1:2000-1:100,000) or Cruz Marker™ compatible donkey anti-goat IgG-HRP: sc-2033 (dilution range: 1:2000-1:5000), Cruz Marker™ Molecular Weight Standards: sc-2035, TBS Blotto A Blocking Reagent: sc-2333 and Western Blotting Luminol Reagent: sc-2048. 2) Immunoprecipitation: use Protein A/G PLUS-Agarose: sc-2003 (0.5 ml agarose/2.0 ml). 3) Immunofluorescence: use donkey anti-goat IgG-FITC: sc-2024 (dilution range: 1:100-1:400) or donkey anti-goat IgG-TR: sc-2783 (dilution range: 1:100-1:400) with UltraCruz™ Mounting Medium: sc-24941.

DATA



Ribosomal Protein L19 (T-12): sc-131342. Western blot analysis of Ribosomal Protein L19 expression in K-562 whole cell lysate.

STORAGE

Store at 4° C, ****DO NOT FREEZE****. Stable for one year from the date of shipment. Non-hazardous. No MSDS required.

RESEARCH USE

For research use only, not for use in diagnostic procedures.

PROTOCOLS

See our web site at www.scbt.com or our catalog for detailed protocols and support products.



MONOS
Satisfaction
Guaranteed

Try **Ribosomal Protein L19 (K-12): sc-100830**, our highly recommended monoclonal alternative to Ribosomal Protein L19 (T-12).