

CPXCR1 (P-13): sc-131469

BACKGROUND

CPXCR1 (CPX chromosomal region candidate gene 1 protein) is a 301 amino acid protein encoded by the human gene CPXCR1 located on the X chromosome. The CPXCR1 chromosomal region is known as the X-linked cleft palate and ankyloglossia (CPX) critical region. X-linked cleft palate (CPX), a congenital, semi-dominant disorder that is influenced only by genetic factors, is influenced by mutations within this region. Ankyloglossia (tongue-tie) is also associated with X-linked cleft palate in an Icelandic population. In this population the gene responsible for cleft palate (CPX) was assigned to the Xq21.3-q22 region between DXYS12 and DXS17.

REFERENCES

1. Björnsson, A., et al. 1989. X-linked cleft palate and ankyloglossia in an Icelandic family. *Cleft Palate J.* 26: 3-8.
2. Gorski, S.M., et al. 1992. The gene responsible for X-linked cleft palate (CPX) in a British Columbia native kindred is localized between PGK1 and DXYS1. *Am. J. Hum. Genet.* 50: 1129-1136.
3. Gorski, S.M., et al. 1994. Linkage analysis of X-linked cleft palate and ankyloglossia in Manitoba Mennonite and British Columbia Native kindreds. *Hum. Genet.* 94: 141-148.
4. Forbes, S.A., et al. 1996. Refined mapping and YAC contig construction of the X-linked cleft palate and ankyloglossia locus (CPX) including the proximal X-Y homology breakpoint within Xq21.3. *Genomics* 31: 36-43.
5. Wong, F.K., et al. 2000. Linkage analysis of candidate regions in Swedish nonsyndromic cleft lip with or without cleft palate families. *Cleft Palate Craniofac. J.* 37: 357-362.
6. Siderius, L.E., et al. 2000. X-linked mental retardation associated with cleft lip/palate maps to Xp11.3-q21.3. *Am. J. Med. Genet.* 85: 216-220.
7. Braybrook, C., et al. 2001. Physical and transcriptional mapping of the X-linked cleft palate and ankyloglossia (CPX) critical region. *Hum. Genet.* 108: 537-545.

CHROMOSOMAL LOCATION

Genetic locus: CPXCR1 (human) mapping to Xq21.31; Cpocr1 (mouse) mapping to X E1.

SOURCE

CPXCR1 (P-13) is an affinity purified goat polyclonal antibody raised against a peptide mapping within an internal region of CPXCR1 of mouse origin.

PRODUCT

Each vial contains 200 µg IgG in 1.0 ml of PBS with < 0.1% sodium azide and 0.1% gelatin.

Blocking peptide available for competition studies, sc-131469 P, (100 µg peptide in 0.5 ml PBS containing < 0.1% sodium azide and 0.2% BSA).

STORAGE

Store at 4° C, ****DO NOT FREEZE****. Stable for one year from the date of shipment. Non-hazardous. No MSDS required.

APPLICATIONS

CPXCR1 (P-13) is recommended for detection of CPXCR1 of mouse, rat and human origin by Western Blotting (starting dilution 1:200, dilution range 1:100-1:1000), immunoprecipitation [1-2 µg per 100-500 µg of total protein (1 ml of cell lysate)], immunofluorescence (starting dilution 1:50, dilution range 1:50-1:500) and solid phase ELISA (starting dilution 1:30, dilution range 1:30-1:3000).

Suitable for use as control antibody for CPXCR1 siRNA (h): sc-90983, CPXCR1 siRNA (m): sc-142552, CPXCR1 shRNA Plasmid (h): sc-90983-SH, CPXCR1 shRNA Plasmid (m): sc-142552-SH, CPXCR1 shRNA (h) Lentiviral Particles: sc-90983-V and CPXCR1 shRNA (m) Lentiviral Particles: sc-142552-V.

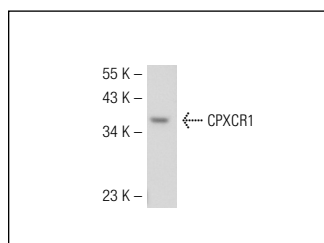
Molecular Weight of CPXCR1: 35 kDa.

Positive Controls: SCC-4 whole cell lysate, mouse embryo tissue extract or Jurkat whole cell lysate: sc-2204.

RECOMMENDED SECONDARY REAGENTS

To ensure optimal results, the following support (secondary) reagents are recommended: 1) Western Blotting: use donkey anti-goat IgG-HRP: sc-2020 (dilution range: 1:2000-1:100,000) or Cruz Marker™ compatible donkey anti-goat IgG-HRP: sc-2033 (dilution range: 1:2000-1:5000), Cruz Marker™ Molecular Weight Standards: sc-2035, TBS Blotto A Blocking Reagent: sc-2333 and Western Blotting Luminol Reagent: sc-2048. 2) Immunoprecipitation: use Protein A/G PLUS-Agarose: sc-2003 (0.5 ml agarose/2.0 ml). 3) Immunofluorescence: use donkey anti-goat IgG-FITC: sc-2024 (dilution range: 1:100-1:400) or donkey anti-goat IgG-TR: sc-2783 (dilution range: 1:100-1:400) with UltraCruz™ Mounting Medium: sc-24941.

DATA



CPXCR1 (P-13): sc-131469. Western blot analysis of CPXCR1 expression in SCC-4 whole cell lysate.

RESEARCH USE

For research use only, not for use in diagnostic procedures.

PROTOCOLS

See our web site at www.scbt.com or our catalog for detailed protocols and support products.