

FKBP12.6 (L-12): sc-131520

BACKGROUND

Immunophilins are a highly conserved family of *cis-trans* peptidyl-prolyl isomerases which bind to and mediate the effects of immunosuppressive drugs such as Cyclosporin, FK506 and Rapamycin. FKBP12.6, also known as FK506-binding protein 1B, is a 108 amino acid immunophilin belonging to the FKBP-type PPIase family. Subcellularly localized to the cytoplasm, FKBP12.6 binds to RyR in cardiac muscle sarcoplasmic reticulum and possibly plays a unique physiological role in excitation-contraction coupling in cardiac muscle. FKBP12.6 also catalyzes the *cis-trans* isomerization of proline imidic peptide bonds in oligopeptides. Ubiquitously expressed, FKBP12.6 is found at highest levels in brain and thymus. FKBP12.6 is expressed as two isoforms produced by alternative splicing.

CHROMOSOMAL LOCATION

Genetic locus: FKBP1B (human) mapping to 2p23.3; Fkbp1b (mouse) mapping to 12 A1.1.

SOURCE

FKBP12.6 (L-12) is an affinity purified goat polyclonal antibody raised against a peptide mapping within an internal region of FKBP12.6 of human origin.

PRODUCT

Each vial contains 200 µg IgG in 1.0 ml of PBS with < 0.1% sodium azide and 0.1% gelatin.

Blocking peptide available for competition studies, sc-131520 P, (100 µg peptide in 0.5 ml PBS containing < 0.1% sodium azide and 0.2% BSA).

STORAGE

Store at 4° C, ****DO NOT FREEZE****. Stable for one year from the date of shipment. Non-hazardous. No MSDS required.

APPLICATIONS

FKBP12.6 (L-12) is recommended for detection of FKBP12.6 isoform 1 of mouse, rat and human origin by Western Blotting (starting dilution 1:200, dilution range 1:100-1:1000), immunofluorescence (starting dilution 1:50, dilution range 1:50-1:500), immunohistochemistry (including paraffin-embedded sections) (starting dilution 1:50, dilution range 1:50-1:500) and solid phase ELISA (starting dilution 1:30, dilution range 1:30-1:3000); may cross-react with family member FKBP12; non cross-reactive with FKBP12.6 isoform 2.

FKBP12.6 (L-12) is also recommended for detection of FKBP12.6 isoform 1 in additional species, including equine, canine, bovine and porcine.

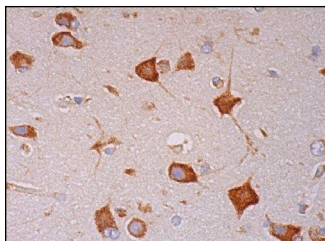
Suitable for use as control antibody for FKBP12.6 siRNA (h): sc-42891, FKBP12.6 siRNA (m): sc-42892, FKBP12.6 shRNA Plasmid (h): sc-42891-SH, FKBP12.6 shRNA Plasmid (m): sc-42892-SH, FKBP12.6 shRNA (h) Lentiviral Particles: sc-42891-V and FKBP12.6 shRNA (m) Lentiviral Particles: sc-42892-V.

Molecular Weight of FKBP12.6: 12 kDa.

RECOMMENDED SECONDARY REAGENTS

To ensure optimal results, the following support (secondary) reagents are recommended: 1) Western Blotting: use donkey anti-goat IgG-HRP: sc-2020 (dilution range: 1:2000-1:100,000) or Cruz Marker™ compatible donkey anti-goat IgG-HRP: sc-2033 (dilution range: 1:2000-1:5000), Cruz Marker™ Molecular Weight Standards: sc-2035, TBS Blotto A Blocking Reagent: sc-2333 and Western Blotting Luminol Reagent: sc-2048. 2) Immunofluorescence: use donkey anti-goat IgG-FITC: sc-2024 (dilution range: 1:100-1:400) or donkey anti-goat IgG-TR: sc-2783 (dilution range: 1:100-1:400) with UltraCruz™ Mounting Medium: sc-24941. 3) Immunohistochemistry: use ImmunoCruz™: sc-2053 or ABC: sc-2023 goat IgG Staining Systems.

DATA



FKBP12.6 (L-12): sc-131520. Immunoperoxidase staining of formalin fixed, paraffin-embedded human cerebral cortex tissue showing cytoplasmic staining of neuronal cells, glial cells and endothelial cells.

RESEARCH USE

For research use only, not for use in diagnostic procedures.

PROTOCOLS

See our web site at www.scbt.com or our catalog for detailed protocols and support products.



Try **FKBP12.6 (H-8): sc-376135**, our highly recommended monoclonal alternative to FKBP12.6 (L-12).