

KLHDC8A (N-13): sc-131576

BACKGROUND

Kelch domain-containing protein 8A (KLHDC8A) is a 350 amino acid protein. KLHDC8A contains 7 kelch repeats, each of which is an approximately 50 amino acid long conserved region that forms a tertiary structure β -propeller. The gene that encodes KLHDC8A is located on chromosome 1, which is the largest human chromosome, spanning about 260 million base pairs and making up 8% of the human genome. There are about 3,000 genes on chromosome 1, and considering the great number of genes there are also a large number of diseases associated with chromosome 1. Notably, the rare aging disease Hutchinson-Gilford progeria is associated with the LMNA gene which encodes Lamin A. The MUTYH gene is located on chromosome 1 and is partially responsible for familial adenomatous polyposis. Stickler syndrome, Parkinsons, Gaucher disease and Usher syndrome are also associated with chromosome 1. Aberrations in chromosome 1 are found in a variety of cancers including head and neck cancer, malignant melanoma and multiple myeloma.

REFERENCES

1. Watson, M.L., et al. 1990. Genomic organization of the selectin family of leukocyte adhesion molecules on human and mouse chromosome 1. *J. Exp. Med.* 172: 263-272.
2. Adams, J., et al. 2000. The kelch repeat superfamily of proteins: propellers of cell function. *Trends Cell Biol.* 10: 17-24.
3. Prag, S., et al. 2003. Molecular phylogeny of the kelch-repeat superfamily reveals an expansion of BTB/kelch proteins in animals. *BMC Bioinformatics* 4: 42.
4. Marzin, Y., et al. 2006. Chromosome 1 abnormalities in multiple myeloma. *Anticancer Res.* 26: 953-959.
5. Scaffidi, P., et al. 2006. Lamin A-dependent nuclear defects in human aging. *Science* 312: 1059-1063.
6. Lans, H., et al. 2006. Cell biology: ageing nucleus gets out of shape. *Nature* 440: 32-34.
7. Gregory, S.G., et al. 2006. The DNA sequence and biological annotation of human chromosome 1. *Nature* 441: 315-321.

CHROMOSOMAL LOCATION

Genetic locus: KLHDC8A (human) mapping to 1q32.1; Klhdc8 (mouse) mapping to 1 E4.

SOURCE

KLHDC8A (N-13) is an affinity purified goat polyclonal antibody raised against a peptide mapping near the N-terminus of KLHDC8A of human origin.

PRODUCT

Each vial contains 200 μ g IgG in 1.0 ml of PBS with < 0.1% sodium azide and 0.1% gelatin.

Blocking peptide available for competition studies, sc-131576 P, (100 μ g peptide in 0.5 ml PBS containing < 0.1% sodium azide and 0.2% BSA).

APPLICATIONS

KLHDC8A (N-13) is recommended for detection of KLHDC8A of mouse, rat and human origin by Western Blotting (starting dilution 1:200, dilution range 1:100-1:1000), immunoprecipitation [1-2 μ g per 100-500 μ g of total protein (1 ml of cell lysate)], immunofluorescence (starting dilution 1:50, dilution range 1:50-1:500) and solid phase ELISA (starting dilution 1:30, dilution range 1:30-1:3000); non cross-reactive with KLHDC family members.

KLHDC8A (N-13) is also recommended for detection of KLHDC8A in additional species, including equine, canine, bovine and porcine.

Suitable for use as control antibody for KLHDC8A siRNA (h): sc-88305, KLHDC8A siRNA (m): sc-146508, KLHDC8A shRNA Plasmid (h): sc-88305-SH, KLHDC8A shRNA Plasmid (m): sc-146508-SH, KLHDC8A shRNA (h) Lentiviral Particles: sc-88305-V and KLHDC8A shRNA (m) Lentiviral Particles: sc-146508-V.

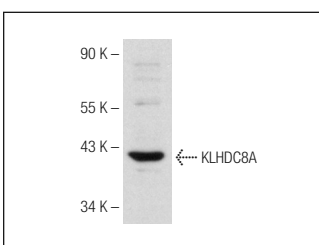
Molecular Weight of KLHDC8A: 39 kDa.

Positive Controls: Jurkat whole cell lysate: sc-2204 or MCF7 whole cell lysate: sc-2206.

RECOMMENDED SECONDARY REAGENTS

To ensure optimal results, the following support (secondary) reagents are recommended: 1) Western Blotting: use donkey anti-goat IgG-HRP: sc-2020 (dilution range: 1:2000-1:100,000) or Cruz Marker[™] compatible donkey anti-goat IgG-HRP: sc-2033 (dilution range: 1:2000-1:5000), Cruz Marker[™] Molecular Weight Standards: sc-2035, TBS Blotto A Blocking Reagent: sc-2333 and Western Blotting Luminol Reagent: sc-2048. 2) Immunoprecipitation: use Protein A/G PLUS-Agarose: sc-2003 (0.5 ml agarose/2.0 ml). 3) Immunofluorescence: use donkey anti-goat IgG-FITC: sc-2024 (dilution range: 1:100-1:400) or donkey anti-goat IgG-TR: sc-2783 (dilution range: 1:100-1:400) with UltraCruz[™] Mounting Medium: sc-24941.

DATA



KLHDC8A (N-13): sc-131576. Western blot analysis of KLHDC8A expression in MCF7 whole cell lysate.

STORAGE

Store at 4° C, **DO NOT FREEZE**. Stable for one year from the date of shipment. Non-hazardous. No MSDS required.

RESEARCH USE

For research use only, not for use in diagnostic procedures.