

PAI-RBP1 (N-12): sc-131742

BACKGROUND

PAI-RBP1 (plasminogen activator inhibitor 1 RNA-binding protein), also known as SERBP1 (SERPINE1 mRNA-binding protein 1), CGI-55, CHD3IP (chromodomain helicase DNA binding protein 3 interacting protein), HAPB4L or PAI-RBP1, is a membrane-associated protein that localizes to the nucleus, the perinuclear region of the cytoplasm and the plasma membrane. PAI-RBP1 is believed to play a role in the regulation of mRNA stability, as it specifically binds to the CRS (cyclic nucleotide-responsive sequence) motif of the PAI-1 mRNA and acts to stabilize the mRNA and regulate its expression. In addition, PAI-RBP1 interacts with Mi2- α and may be involved in chromatin remodeling. PAI-RBP1 also interacts with PGRMC1 and participates in the transduction of the antiapoptotic action of progesterone in ovarian cell types. The gene encoding PAI-RBP1 is overexpressed in ovarian cancer, suggesting a possible role for PAI-RBP1 in tumorigenesis and tumor metastasis.

CHROMOSOMAL LOCATION

Genetic locus: SERBP1 (human) mapping to 1p31.3; Serbp1 (mouse) mapping to 6 C1.

SOURCE

PAI-RBP1 (N-12) is an affinity purified goat polyclonal antibody raised against a peptide mapping near the N-terminus of PAI-RBP1 of human origin.

PRODUCT

Each vial contains 200 μ g IgG in 1.0 ml of PBS with < 0.1% sodium azide and 0.1% gelatin.

Blocking peptide available for competition studies, sc-131742 P, (100 μ g peptide in 0.5 ml PBS containing < 0.1% sodium azide and 0.2% BSA).

APPLICATIONS

PAI-RBP1 (N-12) is recommended for detection of PAI-RBP1 isoforms 1-4 of mouse, rat and human origin by Western Blotting (starting dilution 1:200, dilution range 1:100-1:1000), immunoprecipitation [1-2 μ g per 100-500 μ g of total protein (1 ml of cell lysate)], immunofluorescence (starting dilution 1:50, dilution range 1:50-1:500), immunohistochemistry (including paraffin-embedded sections) (starting dilution 1:50, dilution range 1:50-1:500) and solid phase ELISA (starting dilution 1:30, dilution range 1:30-1:3000).

PAI-RBP1 (N-12) is also recommended for detection of PAI-RBP1 isoforms 1-4 in additional species, including canine, bovine, porcine and avian.

Suitable for use as control antibody for PAI-RBP1 siRNA (h): sc-88846, PAI-RBP1 siRNA (m): sc-151994, PAI-RBP1 shRNA Plasmid (h): sc-88846-SH, PAI-RBP1 shRNA Plasmid (m): sc-151994-SH, PAI-RBP1 shRNA (h) Lentiviral Particles: sc-88846-V and PAI-RBP1 shRNA (m) Lentiviral Particles: sc-151994-V.

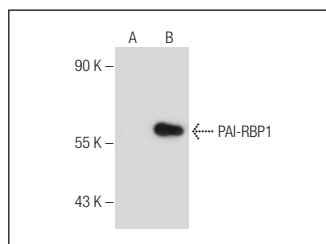
Molecular Weight of PAI-RBP1: 60 kDa.

Positive Controls: PAI-RBP1 (m): 293T Lysate: sc-122356, HeLa whole cell lysate: sc-2200 or Hep G2 cell lysate: sc-2227.

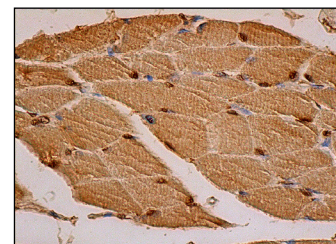
RECOMMENDED SECONDARY REAGENTS

To ensure optimal results, the following support (secondary) reagents are recommended: 1) Western Blotting: use donkey anti-goat IgG-HRP: sc-2020 (dilution range: 1:2000-1:100,000) or Cruz Marker™ compatible donkey anti-goat IgG-HRP: sc-2033 (dilution range: 1:2000-1:5000), Cruz Marker™ Molecular Weight Standards: sc-2035, TBS Blotto A Blocking Reagent: sc-2333 and Western Blotting Luminol Reagent: sc-2048. 2) Immunoprecipitation: use Protein A/G PLUS-Agarose: sc-2003 (0.5 ml agarose/2.0 ml). 3) Immunofluorescence: use donkey anti-goat IgG-FITC: sc-2024 (dilution range: 1:100-1:400) or donkey anti-goat IgG-TR: sc-2783 (dilution range: 1:100-1:400) with UltraCruz™ Mounting Medium: sc-24941. 4) Immunohistochemistry: use ImmunoCruz™: sc-2053 or ABC: sc-2023 goat IgG Staining Systems.

DATA



PAI-RBP1 (N-12): sc-131742. Western blot analysis of PAI-RBP1 expression in non-transfected: sc-117752 (A) and mouse PAI-RBP1 transfected: sc-122356 (B) 293T whole cell lysates.



PAI-RBP1 (N-12): sc-131742. Immunoperoxidase staining of formalin fixed, paraffin-embedded human skeletal muscle tissue showing cytoplasmic and nuclear staining of myocytes.

STORAGE

Store at 4° C, ****DO NOT FREEZE****. Stable for one year from the date of shipment. Non-hazardous. No MSDS required.

RESEARCH USE

For research use only, not for use in diagnostic procedures.

PROTOCOLS

See our web site at www.scbt.com or our catalog for detailed protocols and support products.

MONOS
Satisfaction
Guaranteed

Try **PAI-RBP1 (F-8): sc-376832** or **PAI-RBP1 (1B9): sc-100800**, our highly recommended monoclonal alternatives to PAI-RBP1 (N-12).