

# Neuroplastin (L-12): sc-131989

## BACKGROUND

Neuroplastin, also known as NPTN, GP55, GP65, SDR1 (stromal cell-derived receptor), np55 or SDFR1, is a single pass type I membrane protein that is predominantly expressed in brain and localizes to the cell membrane. Existing as a member of the Immunoglobulin (Ig) superfamily, Neuroplastin contains at least one Ig-like C2-type domain and at least one Ig-like V-type domain. Neuroplastin functions as a cell adhesion molecule and participates in cell-substrate or cell-cell interactions. Neuroplastin is believed to play a key role in mediating long-term changes in synaptic activity. In addition, Neuroplastin is overexpressed in breast cancers, suggesting a possible role in tumorigenesis. Due to alternative splicing events, Neuroplastin exists in at least two isoforms, namely np55 and np65. The np55 isoform is ubiquitously expressed, whereas the np65 isoform is exclusively expressed in brain.

## REFERENCES

1. Smalla, K.H., et al. 2000. The synaptic glycoprotein Neuroplastin is involved in long-term potentiation at hippocampal CA1 synapses. *Proc. Natl. Acad. Sci. USA* 97: 4327-4332.
2. Kreutz, M.R., et al. 2001. Distribution of transcript and protein isoforms of the synaptic glycoprotein Neuroplastin in rat retina. *Invest. Ophthalmol. Vis. Sci.* 42: 1907-1914.
3. Muramatsu, T., et al. 2003. Basigin (CD147): a multifunctional transmembrane protein involved in reproduction, neural function, inflammation and tumor invasion. *Histol. Histopathol.* 18: 981-987.
4. Marzban, H., et al. 2003. Expression of the immunoglobulin superfamily Neuroplastin adhesion molecules in adult and developing mouse cerebellum and their localisation to parasagittal stripes. *J. Comp. Neurol.* 462: 286-301.
5. Buckby, L.E., et al. 2004. Comparison of Neuroplastin and synaptic marker protein expression in acute and cultured organotypic hippocampal slices from rat. *Brain Res. Dev. Brain Res.* 150: 1-7.

## CHROMOSOMAL LOCATION

Genetic locus: NPTN (human) mapping to 15q24.1; Nptn (mouse) mapping to 9 B.

## SOURCE

Neuroplastin (L-12) is an affinity purified goat polyclonal antibody raised against a peptide mapping within an internal region of Neuroplastin of human origin.

## PRODUCT

Each vial contains 200 µg IgG in 1.0 ml of PBS with < 0.1% sodium azide and 0.1% gelatin.

Blocking peptide available for competition studies, sc-131989 P, (100 µg peptide in 0.5 ml PBS containing < 0.1% sodium azide and 0.2% BSA).

## RESEARCH USE

For research use only, not for use in diagnostic procedures.

## APPLICATIONS

Neuroplastin (L-12) is recommended for detection of Neuroplastin isoforms 1-4 of mouse, rat and human origin by Western Blotting (starting dilution 1:200, dilution range 1:100-1:1000), immunoprecipitation [1-2 µg per 100-500 µg of total protein (1 ml of cell lysate)], immunofluorescence (starting dilution 1:50, dilution range 1:50-1:500) and solid phase ELISA (starting dilution 1:30, dilution range 1:30-1:3000).

Neuroplastin (L-12) is also recommended for detection of Neuroplastin isoforms 1-4 in additional species, including equine, canine and porcine.

Suitable for use as control antibody for Neuroplastin siRNA (h): sc-90193, Neuroplastin siRNA (m): sc-149938, Neuroplastin shRNA Plasmid (h): sc-90193-SH, Neuroplastin shRNA Plasmid (m): sc-149938-SH, Neuroplastin shRNA (h) Lentiviral Particles: sc-90193-V and Neuroplastin shRNA (m) Lentiviral Particles: sc-149938-V.

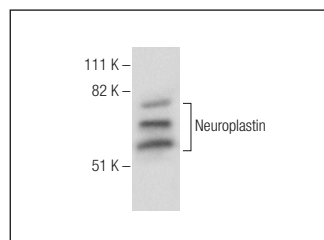
Molecular Weight of Neuroplastin isoforms: 55/65 kDa.

Positive Controls: mouse brain extract: sc-2253.

## RECOMMENDED SECONDARY REAGENTS

To ensure optimal results, the following support (secondary) reagents are recommended: 1) Western Blotting: use donkey anti-goat IgG-HRP: sc-2020 (dilution range: 1:2000-1:100,000) or Cruz Marker™ compatible donkey anti-goat IgG-HRP: sc-2033 (dilution range: 1:2000-1:5000), Cruz Marker™ Molecular Weight Standards: sc-2035, TBS Blotto A Blocking Reagent: sc-2333 and Western Blotting Luminol Reagent: sc-2048. 2) Immunoprecipitation: use Protein A/G PLUS-Agarose: sc-2003 (0.5 ml agarose/2.0 ml). 3) Immunofluorescence: use donkey anti-goat IgG-FITC: sc-2024 (dilution range: 1:100-1:400) or donkey anti-goat IgG-TR: sc-2783 (dilution range: 1:100-1:400) with UltraCruz™ Mounting Medium: sc-24941.

## DATA



Neuroplastin (L-12): sc-131989. Western blot analysis of Neuroplastin expression in mouse brain tissue extract.

## STORAGE

Store at 4° C, **\*\*DO NOT FREEZE\*\***. Stable for one year from the date of shipment. Non-hazardous. No MSDS required.

## PROTOCOLS

See our web site at [www.scbt.com](http://www.scbt.com) or our catalog for detailed protocols and support products.