

# TLR8 (D-15)-R: sc-13212-R

## BACKGROUND

The toll-like Receptors (TLR) are a family of human receptors that share homology with the *Drosophila* toll Receptors, which are involved in mediating dorsoventral polarization in developing *Drosophila* embryos and participate in host immunity. The TLR family members are characterized by a highly conserved toll homology (TH) domain, which is essential for toll-induced signal transductions. TLRs are type I transmembrane receptors that contain an extracellular domain consisting of several leucine-rich regions and a single cytoplasmic toll/IL-1R like domain. Three TLR family members, TLR7, TLR8 and TLR9, belong to a subfamily of TLRs, which are differentially expressed. TLR7 is expressed in lung, placenta and spleen. TLR8 is expressed in lung and peripheral blood leukocytes, and TLR9 is predominantly expressed in spleen, lymph nodes, bone marrow and peripheral blood leukocytes. TLR7, TLR8 and TLR9 stimulate the NF $\kappa$ B signaling pathway, suggesting that they play a role in the immune response.

## REFERENCES

1. Gay, N.J. and Keith, F.J. 1991. *Drosophila* toll and IL-1 receptor. Nature 351: 355-356.
2. Rock, F.L., et al. 1998. A family of human receptors structurally related to *Drosophila* toll. Proc. Natl. Acad. Sci. USA 95: 588-593.
3. Brightbill, H.D., et al. 1999. Host defense mechanisms triggered by microbial lipoproteins through toll-like receptors. Science 285: 732-736.

## CHROMOSOMAL LOCATION

Genetic locus: TLR8 (human) mapping to Xp22.2.

## SOURCE

TLR8 (D-15)-R is an affinity purified rabbit polyclonal antibody raised against a peptide mapping near the N-terminus of TLR8 of human origin.

## PRODUCT

Each vial contains 200  $\mu$ g IgG in 1.0 ml of PBS with < 0.1% sodium azide and 0.1% gelatin.

Blocking peptide available for competition studies, sc-13212 P, (100  $\mu$ g peptide in 0.5 ml PBS containing < 0.1% sodium azide and 0.2% BSA).

## APPLICATIONS

TLR8 (D-15)-R is recommended for detection of TLR8 of human origin by Western Blotting (starting dilution 1:200, dilution range 1:100-1:1000), immunoprecipitation [1-2  $\mu$ g per 100-500  $\mu$ g of total protein (1 ml of cell lysate)], immunofluorescence (starting dilution 1:50, dilution range 1:50-1:500) and solid phase ELISA (starting dilution 1:30, dilution range 1:30-1:3000).

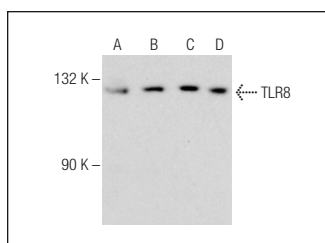
Suitable for use as control antibody for TLR8 siRNA (h): sc-40268, TLR8 shRNA Plasmid (h): sc-40268-SH and TLR8 shRNA (h) Lentiviral Particles: sc-40268-V.

Molecular Weight of TLR8: 119.8 kDa.

## RECOMMENDED SECONDARY REAGENTS

To ensure optimal results, the following support (secondary) reagents are recommended: 1) Western Blotting: use goat anti-rabbit IgG-HRP: sc-2004 (dilution range: 1:2000-1:100,000) or Cruz Marker<sup>™</sup> compatible goat anti-rabbit IgG-HRP: sc-2030 (dilution range: 1:2000-1:5000), Cruz Marker<sup>™</sup> Molecular Weight Standards: sc-2035, TBS Blotto A Blocking Reagent: sc-2333 and Western Blotting Luminol Reagent: sc-2048. 2) Immunoprecipitation: use Protein A/G PLUS-Agarose: sc-2003 (0.5 ml agarose/2.0 ml). 3) Immunofluorescence: use goat anti-rabbit IgG-FITC: sc-2012 (dilution range: 1:100-1:400) or goat anti-rabbit IgG-TR: sc-2780 (dilution range: 1:100-1:400) with UltraCruz<sup>™</sup> Mounting Medium: sc-24941.

## DATA



TLR8 (D-15)-R: sc-13212-R. Western blot analysis of TLR8 expression in Ramos (A), Raji (B), NCI-H460 (C) and GA-10 (D) whole cell lysates.

## SELECT PRODUCT CITATIONS

1. Aflatoonian, R., et al. 2007. Menstrual cycle-dependent changes of Toll-like receptors in endometrium. Hum. Reprod. 22: 586-593.
2. Aboussahoud, W., et al. 2010. Expression and function of Toll-like receptors in human endometrial epithelial cell lines. J. Reprod. Immunol. 84: 41-51.

## RESEARCH USE

For research use only, not for use in diagnostic procedures.

## STORAGE

Store at 4° C, **\*\*DO NOT FREEZE\*\***. Stable for one year from the date of shipment. Non-hazardous. No MSDS required.

## PROTOCOLS

See our web site at [www.scbt.com](http://www.scbt.com) or our catalog for detailed protocols and support products.



MONOS  
Satisfaction  
Guaranteed

Try **TLR8 (D-8): sc-373760** or **TLR8 (9A6): sc-135584**, our highly recommended monoclonal alternatives to TLR8 (D-15).