

ZBTB26 (K-12): sc-132142

BACKGROUND

Zinc-finger proteins contain DNA-binding domains and have a wide variety of functions, most of which encompass some form of transcriptional activation or repression. The majority of zinc-finger proteins contain a Krüppel-type DNA binding domain and a KRAB domain, which is thought to interact with KAP1, thereby recruiting histone modifying proteins. Zinc finger and BTB domain-containing protein 26 (ZBTB26), also known as ZNF481, is a 441 amino acid member of the Krüppel C₂H₂-type zinc-finger protein family. Localized to the nucleus, ZBTB26 contains a BTB domain, also known as a POZ domain, which inhibits DNA binding and mediates homotypic and heterotypic dimerization. Characteristics of the BTB domain suggest that ZBTB26 functions as a transcription regulator.

REFERENCES

1. Thiesen, H.J. 1990. Multiple genes encoding zinc finger domains are expressed in human T cells. *New Biol.* 2: 363-374.
2. Abrink, M., Aveskogh, M. and Hellman, L. 1995. Isolation of cDNA clones for 42 different Krüppel-related zinc finger proteins expressed in the human monoblast cell line U-937. *DNA Cell Biol.* 14: 125-136.
3. Walter, L. and Günther, E. 2000. Physical mapping and evolution of the centromeric class I gene-containing region of the rat MHC. *Immunogenetics* 51: 829-837.
4. Durand, S., Abadie, P., Angeletti, S. and Genti-Raimondi, S. 2003. Identification of multiple differentially expressed messenger RNAs in normal and pathological trophoblast. *Placenta* 24: 209-218.
5. Smith, T.H., Stedronsky, K., Morgan, B. and McGowan, R.A. 2006. Identification and isolation of a BTB-POZ-containing gene expressed in oocytes and early embryos of the zebrafish *Danio rerio*. *Genome* 49: 808-814.
6. Liu, J. and Stormo, G.D. 2008. Context-dependent DNA recognition code for C₂H₂ zinc-finger transcription factors. *Bioinformatics* 24: 1850-1857.

CHROMOSOMAL LOCATION

Genetic locus: ZBTB26 (human) mapping to 9q33.2; Zbtb26 (mouse) mapping to 2 B.

SOURCE

ZBTB26 (K-12) is an affinity purified goat polyclonal antibody raised against a peptide mapping within an internal region of ZBTB26 of human origin.

PRODUCT

Each vial contains 200 µg IgG in 1.0 ml of PBS with < 0.1% sodium azide and 0.1% gelatin.

Blocking peptide available for competition studies, sc-132142 P, (100 µg peptide in 0.5 ml PBS containing < 0.1% sodium azide and 0.2% BSA).

STORAGE

Store at 4° C, ****DO NOT FREEZE****. Stable for one year from the date of shipment. Non-hazardous. No MSDS required.

APPLICATIONS

ZBTB26 (K-12) is recommended for detection of ZBTB26 of mouse, rat and human origin by Western Blotting (starting dilution 1:200, dilution range 1:100-1:1000), immunoprecipitation [1-2 µg per 100-500 µg of total protein (1 ml of cell lysate)], immunofluorescence (starting dilution 1:50, dilution range 1:50-1:500) and solid phase ELISA (starting dilution 1:30, dilution range 1:30-1:3000); non cross-reactive with other ZBTB family members.

ZBTB26 (K-12) is also recommended for detection of ZBTB26 in additional species, including equine, canine and porcine.

Suitable for use as control antibody for ZBTB26 siRNA (h): sc-92484, ZBTB26 siRNA (m): sc-155442, ZBTB26 shRNA Plasmid (h): sc-92484-SH, ZBTB26 shRNA Plasmid (m): sc-155442-SH, ZBTB26 shRNA (h) Lentiviral Particles: sc-92484-V and ZBTB26 shRNA (m) Lentiviral Particles: sc-155442-V.

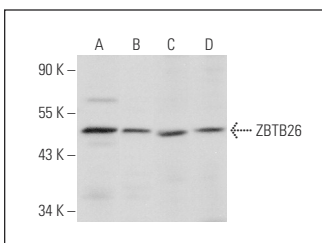
Molecular Weight of ZBTB26: 46 kDa.

Positive Controls: Jurkat whole cell lysate: sc-2204, PANC-1 whole cell lysate: sc-364380 or SH-SY5Y cell lysate: sc-3812.

RECOMMENDED SECONDARY REAGENTS

To ensure optimal results, the following support (secondary) reagents are recommended: 1) Western Blotting: use donkey anti-goat IgG-HRP: sc-2020 (dilution range: 1:2000-1:100,000) or Cruz Marker™ compatible donkey anti-goat IgG-HRP: sc-2033 (dilution range: 1:2000-1:5000), Cruz Marker™ Molecular Weight Standards: sc-2035, TBS Blotto A Blocking Reagent: sc-2333 and Western Blotting Luminol Reagent: sc-2048. 2) Immunoprecipitation: use Protein A/G PLUS-Agarose: sc-2003 (0.5 ml agarose/2.0 ml). 3) Immunofluorescence: use donkey anti-goat IgG-FITC: sc-2024 (dilution range: 1:100-1:400) or donkey anti-goat IgG-TR: sc-2783 (dilution range: 1:100-1:400) with UltraCruz™ Mounting Medium: sc-24941.

DATA



ZBTB26 (K-12): sc-132142. Western blot analysis of ZBTB26 expression in Jurkat (A), PANC-1 (B), SH-SY5Y (C) and U-251-MG (D) whole cell lysates.

RESEARCH USE

For research use only, not for use in diagnostic procedures.

PROTOCOLS

See our web site at www.scbt.com or our catalog for detailed protocols and support products.