

DIS3L2 (K-12): sc-132270

BACKGROUND

The exosome is a multisubunit complex composed of several highly conserved subunits, some of which are 3' to 5' exonucleases. The complex is involved in a variety of cellular processes and is responsible for degrading unstable mRNAs that contain AU-rich (ARE) elements in their untranslated 3' region. DIS3L2 (DIS3-like exonuclease 2) is an 885 amino acid protein that is thought to function as an exonuclease and may be required for the 3' processing of pre-mRNA into mature mRNA. Defects or chromosomal translocations involving the gene encoding DIS3L2 may be associated with Marfanoid habitus, a genetic disorder characterized by abnormalities in the skeleton, eyes and cardiovascular system. DIS3L2 is expressed as five isoforms due to alternative splicing events.

CHROMOSOMAL LOCATION

Genetic locus: DIS3L2 (human) mapping to 2q37.1; Dis3l2 (mouse) mapping to 1 D.

SOURCE

DIS3L2 (K-12) is an affinity purified goat polyclonal antibody raised against a peptide mapping within an internal region of DIS3L2 of human origin.

PRODUCT

Each vial contains 200 µg IgG in 1.0 ml of PBS with < 0.1% sodium azide and 0.1% gelatin.

Blocking peptide available for competition studies, sc-132270 P, (100 µg peptide in 0.5 ml PBS containing < 0.1% sodium azide and 0.2% BSA).

STORAGE

Store at 4° C, ****DO NOT FREEZE****. Stable for one year from the date of shipment. Non-hazardous. No MSDS required.

APPLICATIONS

DIS3L2 (K-12) is recommended for detection of DIS3L2 isoforms 1, 2 and 3 of mouse, rat and human origin by Western Blotting (starting dilution 1:200, dilution range 1:100-1:1000), immunoprecipitation [1-2 µg per 100-500 µg of total protein (1 ml of cell lysate)], immunofluorescence (starting dilution 1:50, dilution range 1:50-1:500) and solid phase ELISA (starting dilution 1:30, dilution range 1:30-1:3000); non cross-reactive with DIS3L.

DIS3L2 (K-12) is also recommended for detection of DIS3L2 isoforms 1, 2 and 3 in additional species, including equine, canine, bovine, porcine and avian.

Suitable for use as control antibody for DIS3L2 siRNA (h): sc-94849, DIS3L2 siRNA (m): sc-143047, DIS3L2 shRNA Plasmid (h): sc-94849-SH, DIS3L2 shRNA Plasmid (m): sc-143047-SH, DIS3L2 shRNA (h) Lentiviral Particles: sc-94849-V and DIS3L2 shRNA (m) Lentiviral Particles: sc-143047-V.

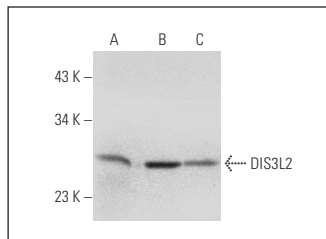
Molecular Weight of DIS3L2 isoforms: 99/69/67/27 kDa.

Positive Controls: Jurkat whole cell lysate: sc-2204, I-11.15 whole cell lysate: sc-364370 or mouse lymph node extract: sc-364243.

RECOMMENDED SECONDARY REAGENTS

To ensure optimal results, the following support (secondary) reagents are recommended: 1) Western Blotting: use donkey anti-goat IgG-HRP: sc-2020 (dilution range: 1:2000-1:100,000) or Cruz Marker™ compatible donkey anti-goat IgG-HRP: sc-2033 (dilution range: 1:2000-1:5000), Cruz Marker™ Molecular Weight Standards: sc-2035, TBS Blotto A Blocking Reagent: sc-2333 and Western Blotting Luminol Reagent: sc-2048. 2) Immunoprecipitation: use Protein A/G PLUS-Agarose: sc-2003 (0.5 ml agarose/2.0 ml). 3) Immunofluorescence: use donkey anti-goat IgG-FITC: sc-2024 (dilution range: 1:100-1:400) or donkey anti-goat IgG-TR: sc-2783 (dilution range: 1:100-1:400) with UltraCruz™ Mounting Medium: sc-24941.

DATA



DIS3L2 (K-12): sc-132270. Western blot analysis of DIS3L2 expression in Jurkat (A) and I-11.15 (B) whole cell lysates and mouse lymph node tissue extract (C).

RESEARCH USE

For research use only, not for use in diagnostic procedures.

PROTOCOLS

See our web site at www.scbt.com or our catalog for detailed protocols and support products.

MONOS
Satisfaction
Guaranteed

Try **DIS3L2 (6C7B2): sc-517218**, our highly recommended monoclonal alternative to DIS3L2 (K-12).