

# EGFL8 (C-14): sc-132283

## BACKGROUND

The epidermal growth factor (EGF) repeat-containing proteins constitute an expanding family of proteins that are involved in several cellular activities, such as blood coagulation, fibrinolysis, cell adhesion and neural and vertebrate development. EGFL8 (EGF-like domain-containing protein 8), also known as C6orf8, NG3 and VE-statin-2, is a 293 amino acid secreted protein that contains two EGF-like domains and one EMI domain. Via its EGF and EMI domains, EGFL8 may participate in protein-protein interactions that correlate with cellular proliferation and developmental signaling events. In mice, EGFL8 is expressed predominately in brain, kidney, lung and thymus.

## REFERENCES

- Appella, E., Weber, I.T. and Blasi, F. 1988. Structure and function of epidermal growth factor-like regions in proteins. *FEBS Lett.* 231: 1-4.
- Davis, C.G. 1990. The many faces of epidermal growth factor repeats. *New Biol.* 2: 410-419.
- Online Mendelian Inheritance in Man, OMIM™. 2002. Johns Hopkins University, Baltimore, MD. MIM Number: 609897. World Wide Web URL: <http://www.ncbi.nlm.nih.gov/omim/>
- Callebaut, I., Mignotte, V., Souchet, M. and Mornon, J.P. 2003. EMI domains are widespread and reveal the probable orthologs of the *Caenorhabditis elegans* CED-1 protein. *Biochem. Biophys. Res. Commun.* 300: 619-623.
- Xie, T., Rowen, L., Aguado, B., Ahearn, M.E., Madan, A., Qin, S., Campbell, R.D. and Hood, L. 2003. Analysis of the gene-dense major histocompatibility complex class III region and its comparison to mouse. *Genome Res.* 13: 2621-2636.
- Fitch, M.J., Campagnolo, L., Kuhnert, F. and Stuhlmann, H. 2004. EGFL7, a novel epidermal growth factor-domain gene expressed in endothelial cells. *Dev. Dyn.* 230: 316-324.
- Zhang, Z. and Henzel, W.J. 2004. Signal peptide prediction based on analysis of experimentally verified cleavage sites. *Protein Sci.* 13: 2819-2824.

## CHROMOSOMAL LOCATION

Genetic locus: EGFL8 (human) mapping to 6p21.32.

## SOURCE

EGFL8 (C-14) is an affinity purified goat polyclonal antibody raised against a peptide mapping at the C-terminus of EGFL8 of human origin.

## PRODUCT

Each vial contains 200 µg IgG in 1.0 ml of PBS with < 0.1% sodium azide and 0.1% gelatin.

Blocking peptide available for competition studies, sc-132283 P, (100 µg peptide in 0.5 ml PBS containing < 0.1% sodium azide and 0.2% BSA).

## STORAGE

Store at 4° C, \*\*DO NOT FREEZE\*\*. Stable for one year from the date of shipment. Non-hazardous. No MSDS required.

## APPLICATIONS

EGFL8 (C-14) is recommended for detection of EGFL8 of human origin by Western Blotting (starting dilution 1:200, dilution range 1:100-1:1000), immunoprecipitation [1-2 µg per 100-500 µg of total protein (1 ml of cell lysate)], immunofluorescence (starting dilution 1:50, dilution range 1:50-1:500) and solid phase ELISA (starting dilution 1:30, dilution range 1:30-1:3000); non cross-reactive with other EGFL family members.

Suitable for use as control antibody for EGFL8 siRNA (h): sc-95064, EGFL8 shRNA Plasmid (h): sc-95064-SH and EGFL8 shRNA (h) Lentiviral Particles: sc-95064-V.

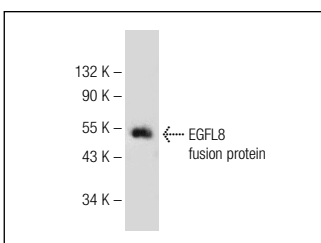
Molecular Weight of EGFL8: 32 kDa.

Positive Controls: Jurkat whole cell lysate: sc-2204.

## RECOMMENDED SECONDARY REAGENTS

To ensure optimal results, the following support (secondary) reagents are recommended: 1) Western Blotting: use donkey anti-goat IgG-HRP: sc-2020 (dilution range: 1:2000-1:100,000) or Cruz Marker™ compatible donkey anti-goat IgG-HRP: sc-2033 (dilution range: 1:2000-1:5000), Cruz Marker™ Molecular Weight Standards: sc-2035, TBS Blotto A Blocking Reagent: sc-2333 and Western Blotting Luminol Reagent: sc-2048. 2) Immunoprecipitation: use Protein A/G PLUS-Agarose: sc-2003 (0.5 ml agarose/2.0 ml). 3) Immunofluorescence: use donkey anti-goat IgG-FITC: sc-2024 (dilution range: 1:100-1:400) or donkey anti-goat IgG-TR: sc-2783 (dilution range: 1:100-1:400) with UltraCruz™ Mounting Medium: sc-24941.

## DATA



EGFL8 (C-14): sc-132283. Western blot analysis of human recombinant EGFL8 fusion protein.

## RESEARCH USE

For research use only, not for use in diagnostic procedures.

## PROTOCOLS

See our web site at [www.scbt.com](http://www.scbt.com) or our catalog for detailed protocols and support products.