

LRRC26 (K-12): sc-132325

BACKGROUND

The leucine-rich repeat (LRR) is a 20-30 amino acid motif that forms a hydrophobic α/β horseshoe fold, allowing it to accommodate several leucine residues within a tightly packed core. All LRR repeats contain a variable segment and a highly conserved segment, the latter of which accounts for 11 or 12 residues of the entire LRR motif. LRRC26 (leucine-rich repeat-containing protein 26), also known as CAPC (cytokeratin-associated protein), is a 334 amino acid protein that localizes to the cytoplasm and contains 6 LRR repeats. Expressed at high levels in normal colon, pancreas, prostate, salivary gland and intestine, LRRC26 is also present in several cancer cell lines, including colon cancer and pancreatic cancer, suggesting an important role in carcinogenesis.

REFERENCES

1. Kobe, B. and Deisenhofer, J. 1994. The leucine-rich repeat: a versatile binding motif. *Trends Biochem. Sci.* 19: 415-421.
2. Kobe, B. and Deisenhofer, J. 1995. Proteins with leucine-rich repeats. *Curr. Opin. Struct. Biol.* 5: 409-416.
3. Kobe, B. and Kajava, A.V. 2001. The leucine-rich repeat as a protein recognition motif. *Curr. Opin. Struct. Biol.* 11: 725-732.
4. Kedzierski, L., Montgomery, J., Curtis, J. and Handman, E. 2004. Leucine-rich repeats in host-pathogen interactions. *Arch. Immunol. Ther. Exp.* 52: 104-112.
5. Enkhbayar, P., Kamiya, M., Osaki, M., Matsumoto, T. and Matsushima, N. 2004. Structural principles of leucine-rich repeat (LRR) proteins. *Proteins* 54: 394-403.
6. Matsushima, N., Tachi, N., Kuroki, Y., Enkhbayar, P., Osaki, M., Kamiya, M. and Kretsinger, R.H. 2005. Structural analysis of leucine-rich-repeat variants in proteins associated with human diseases. *Cell. Mol. Life Sci.* 62: 2771-2791.
7. Eglund, K.A., Liu, X.F., Squires, S., Nagata, S., Man, Y.G., Bera, T.K., Onda, M., Vincent, J.J., Strausberg, R.L., Lee, B. and Pastan, I. 2006. High expression of a cytokeratin-associated protein in many cancers. *Proc. Natl. Acad. Sci. USA* 103: 5929-5934.

CHROMOSOMAL LOCATION

Genetic locus: LRRC26 (human) mapping to 9q34.3; *Lrrc26* (mouse) mapping to 2 A3.

SOURCE

LRRC26 (K-12) is an affinity purified goat polyclonal antibody raised against a peptide mapping within an internal region of LRRC26 of mouse origin.

PRODUCT

Each vial contains 200 μ g IgG in 1.0 ml of PBS with < 0.1% sodium azide and 0.1% gelatin.

Blocking peptide available for competition studies, sc-132325 P, (100 μ g peptide in 0.5 ml PBS containing < 0.1% sodium azide and 0.2% BSA).

APPLICATIONS

LRRC26 (K-12) is recommended for detection of LRRC26 of mouse, rat and human origin by Western Blotting (starting dilution 1:200, dilution range 1:100-1:1000), immunoprecipitation [1-2 μ g per 100-500 μ g of total protein (1 ml of cell lysate)], immunofluorescence (starting dilution 1:50, dilution range 1:50-1:500) and solid phase ELISA (starting dilution 1:30, dilution range 1:30-1:3000); non cross-reactive with other LRRC family members.

Suitable for use as control antibody for LRRC26 siRNA (h): sc-92516, LRRC26 siRNA (m): sc-149065, LRRC26 shRNA Plasmid (h): sc-92516-SH, LRRC26 shRNA Plasmid (m): sc-149065-SH, LRRC26 shRNA (h) Lentiviral Particles: sc-92516-V and LRRC26 shRNA (m) Lentiviral Particles: sc-149065-V.

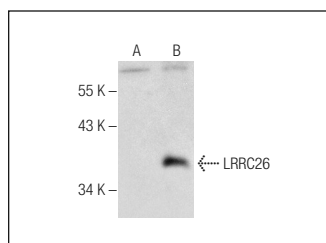
Molecular Weight of LRRC26: 37 kDa.

Positive Controls: LRRC26 (m2): 293T Lysate: sc-127100 or human prostate tissue extract.

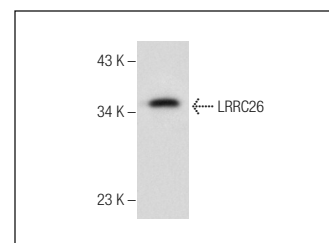
RECOMMENDED SECONDARY REAGENTS

To ensure optimal results, the following support (secondary) reagents are recommended: 1) Western Blotting: use donkey anti-goat IgG-HRP: sc-2020 (dilution range: 1:2000-1:100,000) or Cruz Marker™ compatible donkey anti-goat IgG-HRP: sc-2033 (dilution range: 1:2000-1:5000), Cruz Marker™ Molecular Weight Standards: sc-2035, TBS Blotto A Blocking Reagent: sc-2333 and Western Blotting Luminol Reagent: sc-2048. 2) Immunoprecipitation: use Protein A/G PLUS-Agarose: sc-2003 (0.5 ml agarose/2.0 ml). 3) Immunofluorescence: use donkey anti-goat IgG-FITC: sc-2024 (dilution range: 1:100-1:400) or donkey anti-goat IgG-TR: sc-2783 (dilution range: 1:100-1:400) with UltraCruz™ Mounting Medium: sc-24941.

DATA



LRRC26 (K-12): sc-132325. Western blot analysis of LRRC26 expression in non-transfected: sc-117752 (A) and mouse LRRC26 transfected: sc-127100 (B) 293T whole cell lysates.



LRRC26 (K-12): sc-132325. Western blot analysis of LRRC26 expression in human prostate tissue extract.

STORAGE

Store at 4° C, **DO NOT FREEZE**. Stable for one year from the date of shipment. Non-hazardous. No MSDS required.

RESEARCH USE

For research use only, not for use in diagnostic procedures.

PROTOCOLS

See our web site at www.scbt.com or our catalog for detailed protocols and support products.