

# G6f (E-12): sc-132695

## BACKGROUND

G6f, also known as lymphocyte antigen 6 complex locus protein G6f, is a single-pass type I membrane protein belonging to the immunoglobulin (Ig) superfamily. Located in the class III region of the major histocompatibility complex (MHC), the G6f gene lies in a cluster of genes encoding cell-surface proteins that play a role in the immune system and cellular recognition. G6f functions as a downstream effector of GRB2 and GRB7, and, in humans, it interacts with GRB2 and GRB7 through the phosphorylation of a tyrosine residue (Tyr 281) in the intracellular tail of G6f. This interaction is also mediated by the SH2 domain of GRB2 and possibly that of GRB7. G6f is a 297 amino acid protein, and it forms a disulfide-linked homodimer.

## REFERENCES

- Mungall, A.J., et al. 2003. The DNA sequence and analysis of human chromosome 6. *Nature* 425: 805-811.
- Vuoristo, M.M., et al. 2004. A stop codon mutation in COL11A2 induces exon skipping and leads to non-ocular Stickler syndrome. *Am. J. Med. Genet.* 130A: 160-164.
- McQueen, M.B., et al. 2005. Combined analysis from eleven linkage studies of bipolar disorder provides strong evidence of susceptibility loci on chromosomes 6q and 8q. *Am. J. Hum. Genet.* 77: 582-595.
- Batts, K.P. 2007. Iron overload syndromes and the liver. *Mod. Pathol.* 20: S31-S39.
- Olsson, K.S., et al. 2007. The HLA-A1-B8 haplotype hitchhiking with the hemochromatosis mutation: does it affect the phenotype? *Eur. J. Haematol.* 79: 429-434.
- Park, E., et al. 2007. Modulation of Parkin gene expression in noradrenergic neuronal cells. *Int. J. Dev. Neurosci.* 25: 491-497.
- Safadi, S.S. and Shaw, G.S. 2007. A disease state mutation unfolds the Parkin ubiquitin-like domain. *Biochemistry* 46: 14162-14169.
- Bläker, H., et al. 2008. Recurrent deletions at 6q in early age of onset non-HNPCC- and non-FAP-associated intestinal carcinomas. Evidence for a novel cancer susceptibility locus at 6q14-q22. *Genes Chromosomes Cancer* 47: 159-164.

## CHROMOSOMAL LOCATION

Genetic locus: Ly6g6f (rat) mapping to 20p12.

## SOURCE

G6f (E-12) is an affinity purified goat polyclonal antibody raised against a peptide mapping within an extracellular domain of G6f of rat origin.

## PRODUCT

Each vial contains 200 µg IgG in 1.0 ml of PBS with < 0.1% sodium azide and 0.1% gelatin.

Blocking peptide available for competition studies, sc-132695 P, (100 µg peptide in 0.5 ml PBS containing < 0.1% sodium azide and 0.2% BSA).

## APPLICATIONS

G6f (E-12) is recommended for detection of G6f of rat origin by Western Blotting (starting dilution 1:200, dilution range 1:100-1:1000), immunoprecipitation [1-2 µg per 100-500 µg of total protein (1 ml of cell lysate)], immunofluorescence (starting dilution 1:50, dilution range 1:50-1:500) and solid phase ELISA (starting dilution 1:30, dilution range 1:30-1:3000); non cross-reactive with G6b.

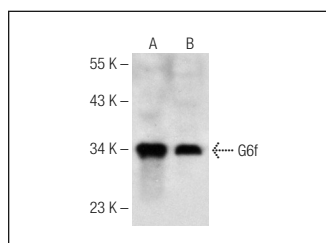
Molecular Weight of G6f: 29 kDa.

Positive Controls: rat small intestine tissue extract: sc-364811 or rat liver extract: sc-2395.

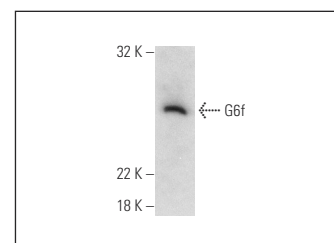
## RECOMMENDED SECONDARY REAGENTS

To ensure optimal results, the following support (secondary) reagents are recommended: 1) Western Blotting: use donkey anti-goat IgG-HRP: sc-2020 (dilution range: 1:2000-1:100,000) or Cruz Marker™ compatible donkey anti-goat IgG-HRP: sc-2033 (dilution range: 1:2000-1:5000), Cruz Marker™ Molecular Weight Standards: sc-2035, TBS Blotto A Blocking Reagent: sc-2333 and Western Blotting Luminol Reagent: sc-2048. 2) Immunoprecipitation: use Protein A/G PLUS-Agarose: sc-2003 (0.5 ml agarose/2.0 ml). 3) Immunofluorescence: use donkey anti-goat IgG-FITC: sc-2024 (dilution range: 1:100-1:400) or donkey anti-goat IgG-TR: sc-2783 (dilution range: 1:100-1:400) with UltraCruz™ Mounting Medium: sc-24941.

## DATA



G6f (E-12): sc-132695. Western blot analysis of G6f expression in rat small intestine tissue extract (A) and Hep G2 whole cell lysate (B).



G6f (E-12): sc-132695. Western blot analysis of G6f expression in rat liver tissue extract.

## STORAGE

Store at 4° C, **\*\*DO NOT FREEZE\*\***. Stable for one year from the date of shipment. Non-hazardous. No MSDS required.

## RESEARCH USE

For research use only, not for use in diagnostic procedures.

## PROTOCOLS

See our web site at [www.scbt.com](http://www.scbt.com) or our catalog for detailed protocols and support products.