

HNRPLL (I-13): sc-132713

BACKGROUND

Heterogeneous nuclear ribonucleoprotein L-like (HNRPLL), also known as stromal RNA-regulating factor (SRRF), is a 542 amino acid nuclear protein. HNRPLL shares 69% amino acid homology with hnRNP L, a protein that binds to the 3' end of introns to modulate alternative splicing mechanisms of pre-mRNAs in normal cells. Due to this homology, HNRPLL is thought to bind RNA and participate in mRNA processing. HNRPLL contains three RNA-regulating motif (RRF) domains, which have RNA-binding regions. HNRPLL interacts with BAT1, an RNA-dependent ATPase that controls ATP hydrolysis during pre-mRNA splicing. HNRPLL is widely expressed in human tissues, including pancreas, lung, kidney, placenta, heart, skeletal muscle and bone marrow stromal cells. HNRPLL is expressed as four isoforms produced by alternative splicing.

CHROMOSOMAL LOCATION

Genetic locus: HNRPLL (human) mapping to 2p22.1; Hnrpll (mouse) mapping to 17 E3.

SOURCE

HNRPLL (I-13) is an affinity purified goat polyclonal antibody raised against a peptide mapping within an internal region of HNRPLL of human origin.

PRODUCT

Each vial contains 200 µg IgG in 1.0 ml of PBS with < 0.1% sodium azide and 0.1% gelatin.

Blocking peptide available for competition studies, sc-132713 P, (100 µg peptide in 0.5 ml PBS containing < 0.1% sodium azide and 0.2% BSA).

STORAGE

Store at 4° C, ****DO NOT FREEZE****. Stable for one year from the date of shipment. Non-hazardous. No MSDS required.

APPLICATIONS

HNRPLL (I-13) is recommended for detection of HNRPLL isoforms 1, 2, 3 and 4 of mouse, rat and human origin by Western Blotting (starting dilution 1:200, dilution range 1:100-1:1000), immunoprecipitation [1-2 µg per 100-500 µg of total protein (1 ml of cell lysate)], immunofluorescence (starting dilution 1:50, dilution range 1:50-1:500) and solid phase ELISA (starting dilution 1:30, dilution range 1:30-1:3000); non cross-reactive with other HNRP family members.

HNRPLL (I-13) is also recommended for detection of HNRPLL isoforms 1, 2, 3 and 4 in additional species, including equine, canine, bovine, porcine and avian.

Suitable for use as control antibody for HNRPLL siRNA (h): sc-94907, HNRPLL siRNA (m): sc-146066, HNRPLL shRNA Plasmid (h): sc-94907-SH, HNRPLL shRNA Plasmid (m): sc-146066-SH, HNRPLL shRNA (h) Lentiviral Particles: sc-94907-V and HNRPLL shRNA (m) Lentiviral Particles: sc-146066-V.

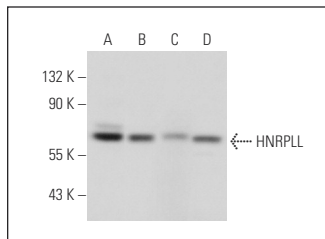
Molecular Weight of HNRPLL: 60 kDa.

Positive Controls: HeLa nuclear extract: sc-2120, K-562 whole cell lysate: sc-2203 or HEK293 whole cell lysate: sc-45136.

RECOMMENDED SECONDARY REAGENTS

To ensure optimal results, the following support (secondary) reagents are recommended: 1) Western Blotting: use donkey anti-goat IgG-HRP: sc-2020 (dilution range: 1:2000-1:100,000) or Cruz Marker™ compatible donkey anti-goat IgG-HRP: sc-2033 (dilution range: 1:2000-1:5000), Cruz Marker™ Molecular Weight Standards: sc-2035, TBS Blotto A Blocking Reagent: sc-2333 and Western Blotting Luminol Reagent: sc-2048. 2) Immunoprecipitation: use Protein A/G PLUS-Agarose: sc-2003 (0.5 ml agarose/2.0 ml). 3) Immunofluorescence: use donkey anti-goat IgG-FITC: sc-2024 (dilution range: 1:100-1:400) or donkey anti-goat IgG-TR: sc-2783 (dilution range: 1:100-1:400) with UltraCruz™ Mounting Medium: sc-24941.

DATA



HNRPLL (I-13): sc-132713. Western blot analysis of HNRPLL expression in HeLa nuclear extract (A) and K-562 (B), HUV-EC-C (C) and HEK293 (D) whole cell lysates.

RESEARCH USE

For research use only, not for use in diagnostic procedures.

PROTOCOLS

See our web site at www.scbt.com or our catalog for detailed protocols and support products.



Try **HNRPLL (A-4): sc-390699** or **HNRPLL (E-7): sc-390455**, our highly recommended monoclonal alternatives to HNRPLL (I-13).