

RASSF7 (L-14): sc-132781

BACKGROUND

Activated Ras proteins may induce senescence, apoptosis and terminal differentiation, though they are often associated with stimulating growth and transformation. Members of the RASSF family contain a highly conserved Ras association domain (RalGDS/AF-6 or RA) and function as Ras effectors/tumor suppressors. RASSF7 (Ras association domain-containing protein 7), also designated HRAS1-related cluster protein 1, is a 373 amino acid protein that localizes to the centrosome. RASSF7, RASSF8, RASSF9 and RASSF10 are four evolutionary conserved proteins that are collectively known as the N-terminal RASSF family. Expressed in skin, neural tube and eye, RASSF7 is believed to play an essential role in mitosis. Further supporting its mitotic role, knockdown of *Xenopus* RASSF7 has been shown to influence cell failure to form mitotic spindle and also cause nuclear breakdown and apoptosis. As a result of alternative splicing events, there are three characterized isoforms of RASSF7 that primarily differ in the C-terminus.

REFERENCES

- Weitzel, J.N., Kasperczyk, A., Mohan, C. and Krontiris, T.G. 1992. The HRAS1 gene cluster: two upstream regions recognizing transcripts and a third encoding a gene with a leucine zipper domain. *Genomics* 14: 309-319.
- Weitzel, J.N. and Patel, J. 1994. A single P₁ clone bearing three genes from human chromosome 11p15.5: HRC1, HRAS1, and RNH. *Genet. Anal. Tech. Appl.* 11: 165-170.
- Online Mendelian Inheritance in Man, OMIM™. 2002. Johns Hopkins University, Baltimore, MD. MIM Number: 143023. World Wide Web URL: <http://www.ncbi.nlm.nih.gov/omim/>
- Song, M.S., Chang, J.S., Song, S.J., Yang, T.H., Lee, H. and Lim, D.S. 2005. The centrosomal protein RAS association domain family protein 1A (RASSF1A)-binding protein 1 regulates mitotic progression by recruiting RASSF1A to spindle poles. *J. Biol. Chem.* 280: 3920-3927.

CHROMOSOMAL LOCATION

Genetic locus: RASSF7 (human) mapping to 11p15.5; Rassf7 (mouse) mapping to 7 F5.

SOURCE

RASSF7 (L-14) is an affinity purified goat polyclonal antibody raised against a peptide mapping within an internal region of RASSF7 of human origin.

PRODUCT

Each vial contains 200 µg IgG in 1.0 ml of PBS with < 0.1% sodium azide and 0.1% gelatin.

Blocking peptide available for competition studies, sc-132781 P, (100 µg peptide in 0.5 ml PBS containing < 0.1% sodium azide and 0.2% BSA).

STORAGE

Store at 4° C, **DO NOT FREEZE**. Stable for one year from the date of shipment. Non-hazardous. No MSDS required.

APPLICATIONS

RASSF7 (L-14) is recommended for detection of RASSF7 isoforms 1 and 2 of mouse, rat and human origin by Western Blotting (starting dilution 1:200, dilution range 1:100-1:1000), immunoprecipitation [1-2 µg per 100-500 µg of total protein (1 ml of cell lysate)], immunofluorescence (starting dilution 1:50, dilution range 1:50-1:500) and solid phase ELISA (starting dilution 1:30, dilution range 1:30-1:3000); non cross-reactive with other RASSF family members.

Suitable for use as control antibody for RASSF7 siRNA (h): sc-96878, RASSF7 siRNA (m): sc-152716, RASSF7 shRNA Plasmid (h): sc-96878-SH, RASSF7 shRNA Plasmid (m): sc-152716-SH, RASSF7 shRNA (h) Lentiviral Particles: sc-96878-V and RASSF7 shRNA (m) Lentiviral Particles: sc-152716-V.

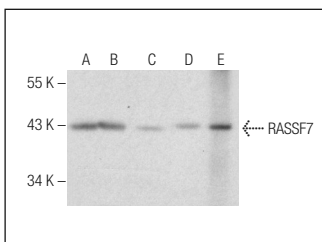
Molecular Weight of RASSF7: 40 kDa.

Positive Controls: C32 whole cell lysate: sc-2205, Jurkat whole cell lysate: sc-2204 or human kidney extract: sc-363764.

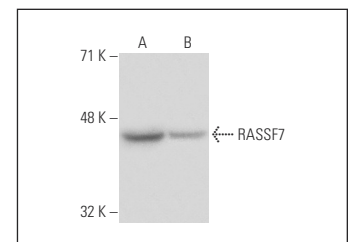
RECOMMENDED SECONDARY REAGENTS

To ensure optimal results, the following support (secondary) reagents are recommended: 1) Western Blotting: use donkey anti-goat IgG-HRP: sc-2020 (dilution range: 1:2000-1:100,000) or Cruz Marker™ compatible donkey anti-goat IgG-HRP: sc-2033 (dilution range: 1:2000-1:5000), Cruz Marker™ Molecular Weight Standards: sc-2035, TBS Blotto A Blocking Reagent: sc-2333 and Western Blotting Luminol Reagent: sc-2048. 2) Immunoprecipitation: use Protein A/G PLUS-Agarose: sc-2003 (0.5 ml agarose/2.0 ml). 3) Immunofluorescence: use donkey anti-goat IgG-FITC: sc-2024 (dilution range: 1:100-1:400) or donkey anti-goat IgG-TR: sc-2783 (dilution range: 1:100-1:400) with UltraCruz™ Mounting Medium: sc-24941.

DATA



RASSF7 (L-14): sc-132781. Western blot analysis of RASSF7 expression in Jurkat (A), C32 (B), A549 (C) and RAW 264.7 (D) whole cell lysates and human kidney tissue extract (E).



RASSF7 (L-14): sc-132781. Western blot analysis of RASSF7 expression in C32 (A) and Hs 294T (B) whole cell lysates.

RESEARCH USE

For research use only, not for use in diagnostic procedures.


 MONOS
Satisfation
Guaranteed

Try **RASSF7 (C-6): sc-374431**, our highly recommended monoclonal alternative to RASSF7 (L-14).