

RNF25 (S-15): sc-132803

BACKGROUND

Ubiquitination is an important mechanism through which three classes of enzymes act in concert to target short-lived or abnormal proteins for destruction. The three classes of enzymes involved in ubiquitination are the ubiquitin-activating enzymes (E1s), the ubiquitin-conjugating enzymes (E2s) and the ubiquitin-protein ligases (E3s). RNF25 (RING finger protein 25), also known as A07, is a 459 amino acid protein that contains one RWD domain and one RING-type zinc finger. Via its RING-type zinc finger (a common domain that contains a conserved cysteine-rich region and is found in a number of viral and eukaryotic proteins), RNF25 is thought to exhibit E2-dependent E3 ubiquitin-protein ligase activity. Specifically, the RING finger of RNF25 interacts with an E2 ligase and, through this interaction, facilitates the ubiquitination of target proteins. RNF25 may also regulate the transcriptional activity of NF κ B p65, a protein that plays important roles in cell survival, inflammation response, host defense and proliferation.

CHROMOSOMAL LOCATION

Genetic locus: RNF25 (human) mapping to 2q35; Rnf25 (mouse) mapping to 1 C3.

SOURCE

RNF25 (S-15) is an affinity purified goat polyclonal antibody raised against a peptide mapping within an internal region of RNF25 of human origin.

PRODUCT

Each vial contains 200 μ g IgG in 1.0 ml of PBS with < 0.1% sodium azide and 0.1% gelatin.

Blocking peptide available for competition studies, sc-132803 P, (100 μ g peptide in 0.5 ml PBS containing < 0.1% sodium azide and 0.2% BSA).

Available as TransCruz reagent for Gel Supershift and ChIP applications, sc-132803 X, 200 μ g/0.1 ml.

APPLICATIONS

RNF25 (S-15) is recommended for detection of RNF25 of mouse, rat and human origin by Western Blotting (starting dilution 1:200, dilution range 1:100-1:1000), immunoprecipitation [1-2 μ g per 100-500 μ g of total protein (1 ml of cell lysate)], immunofluorescence (starting dilution 1:50, dilution range 1:50-1:500) and solid phase ELISA (starting dilution 1:30, dilution range 1:30-1:3000); non cross-reactive with other RNF family members.

Suitable for use as control antibody for RNF25 siRNA (h): sc-94291, RNF25 siRNA (m): sc-153044, RNF25 shRNA Plasmid (h): sc-94291-SH, RNF25 shRNA Plasmid (m): sc-153044-SH, RNF25 shRNA (h) Lentiviral Particles: sc-94291-V and RNF25 shRNA (m) Lentiviral Particles: sc-153044-V.

RNF25 (S-15) X TransCruz antibody is recommended for Gel Supershift and ChIP applications.

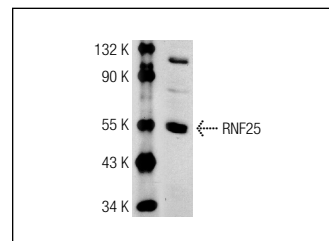
Molecular Weight of RNF25: 51 kDa.

Positive Controls: Jurkat nuclear extract: sc-2132 or HeLa whole cell lysate: sc-2200.

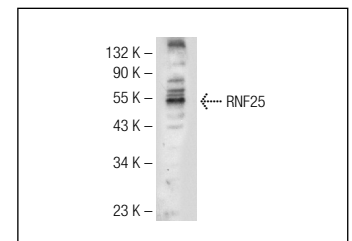
RECOMMENDED SECONDARY REAGENTS

To ensure optimal results, the following support (secondary) reagents are recommended: 1) Western Blotting: use donkey anti-goat IgG-HRP: sc-2020 (dilution range: 1:2000-1:100,000) or Cruz Marker™ compatible donkey anti-goat IgG-HRP: sc-2033 (dilution range: 1:2000-1:5000), Cruz Marker™ Molecular Weight Standards: sc-2035, TBS Blotto A Blocking Reagent: sc-2333 and Western Blotting Luminol Reagent: sc-2048. 2) Immunoprecipitation: use Protein A/G PLUS-Agarose: sc-2003 (0.5 ml agarose/2.0 ml). 3) Immunofluorescence: use donkey anti-goat IgG-FITC: sc-2024 (dilution range: 1:100-1:400) or donkey anti-goat IgG-TR: sc-2783 (dilution range: 1:100-1:400) with UltraCruz™ Mounting Medium: sc-24941.

DATA



RNF25 (S-15): sc-132803. Western blot analysis of RNF25 expression in Jurkat nuclear extract.



RNF25 (S-15): sc-132803. Western blot analysis of RNF25 expression in HeLa whole cell lysate.

STORAGE

Store at 4° C, ****DO NOT FREEZE****. Stable for one year from the date of shipment. Non-hazardous. No MSDS required.

RESEARCH USE

For research use only, not for use in diagnostic procedures.

PROTOCOLS

See our web site at www.scbt.com or our catalog for detailed protocols and support products.



Try **RNF25 (E-10): sc-398749** or **RNF25 (C-12): sc-514944**, our highly recommended monoclonal alternatives to RNF25 (S-15).