

ZNF329 (N-12): sc-132941

BACKGROUND

Zinc finger proteins contain DNA-binding domains and have a wide variety of functions, most of which encompass some form of transcriptional activation or repression. The majority of zinc finger proteins contain a Krüppel-type DNA binding domain and a KRAB domain, which is thought to interact with KAP1, thereby recruiting histone modifying proteins. As a member of the Krüppel C₂H₂-type zinc finger protein family, ZNF329 (zinc finger protein 329) is a 541 amino acid nuclear protein that contains 12 C₂H₂-type zinc fingers through which it is thought to be involved in DNA-binding and transcriptional regulation.

REFERENCES

1. Payre, F. and Vincent, A. 1988. Finger proteins and DNA-specific recognition: distinct patterns of conserved amino acids suggest different evolutionary modes. *FEBS Lett.* 234: 245-250.
2. Berg, J.M. 1988. Proposed structure for the zinc-binding domains from transcription factor IIIA and related proteins. *Proc. Natl. Acad. Sci. USA* 85: 99-102.
3. Thiesen, H.J. 1990. Multiple genes encoding zinc finger domains are expressed in human T cells. *New Biol.* 2: 363-374.
4. Rosenfeld, R. and Margalit, H. 1993. Zinc fingers: conserved properties that can distinguish between spurious and actual DNA-binding motifs. *J. Biomol. Struct. Dyn.* 11: 557-570.
5. Abrink, M., Aveskogh, M. and Hellman, L. 1995. Isolation of cDNA clones for 42 different Krüppel-related zinc finger proteins expressed in the human monoblast cell line U-937. *DNA Cell Biol.* 14: 125-136.
6. Tian, C.Y., Zhang, L.Q. and He, F.C. 2006. Progress in the study of KRAB zinc finger protein. *Yi Chuan* 28: 1451-1456.
7. Liu, J. and Stormo, G.D. 2008. Context-dependent DNA recognition code for C₂H₂ zinc-finger transcription factors. *Bioinformatics* 24: 1850-1857.

CHROMOSOMAL LOCATION

Genetic locus: ZNF329 (human) mapping to 19q13.43.

SOURCE

ZNF329 (N-12) is an affinity purified goat polyclonal antibody raised against a peptide mapping at the N-terminus of ZNF329 of human origin.

PRODUCT

Each vial contains 200 µg IgG in 1.0 ml of PBS with < 0.1% sodium azide and 0.1% gelatin.

Blocking peptide available for competition studies, sc-132941 P, (100 µg peptide in 0.5 ml PBS containing < 0.1% sodium azide and 0.2% BSA).

STORAGE

Store at 4° C, ****DO NOT FREEZE****. Stable for one year from the date of shipment. Non-hazardous. No MSDS required.

APPLICATIONS

ZNF329 (N-12) is recommended for detection of ZNF329 of human origin by Western Blotting (starting dilution 1:200, dilution range 1:100-1:1000), immunoprecipitation [1-2 µg per 100-500 µg of total protein (1 ml of cell lysate)], immunofluorescence (starting dilution 1:50, dilution range 1:50-1:500) and solid phase ELISA (starting dilution 1:30, dilution range 1:30-1:3000); non cross-reactive with other ZNF family members.

Suitable for use as control antibody for ZNF329 siRNA (h): sc-97429, ZNF329 shRNA Plasmid (h): sc-97429-SH and ZNF329 shRNA (h) Lentiviral Particles: sc-97429-V.

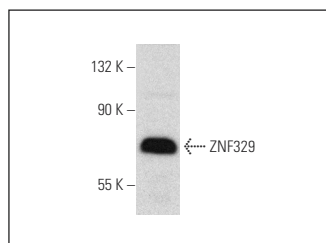
Molecular Weight of ZNF329: 62 kDa.

Positive Controls: Hep G2 cell lysate: sc-2227, THP-1 nuclear extract: sc-24963 or AtT-20/D16vF2 whole cell lysate: sc-364367.

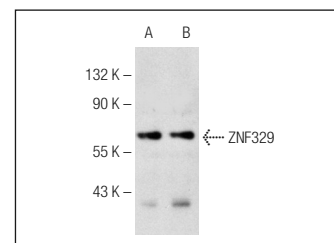
RECOMMENDED SECONDARY REAGENTS

To ensure optimal results, the following support (secondary) reagents are recommended: 1) Western Blotting: use donkey anti-goat IgG-HRP: sc-2020 (dilution range: 1:2000-1:100,000) or Cruz Marker™ compatible donkey anti-goat IgG-HRP: sc-2033 (dilution range: 1:2000-1:5000), Cruz Marker™ Molecular Weight Standards: sc-2035, TBS Blotto A Blocking Reagent: sc-2333 and Western Blotting Luminol Reagent: sc-2048. 2) Immunoprecipitation: use Protein A/G PLUS-Agarose: sc-2003 (0.5 ml agarose/2.0 ml). 3) Immunofluorescence: use donkey anti-goat IgG-FITC: sc-2024 (dilution range: 1:100-1:400) or donkey anti-goat IgG-TR: sc-2783 (dilution range: 1:100-1:400) with UltraCruz™ Mounting Medium: sc-24941.

DATA



ZNF329 (N-12): sc-132941. Western blot analysis of ZNF329 expression in Hep G2 nuclear extract.



ZNF329 (N-12): sc-132941. Western blot analysis of ZNF329 expression in AtT-20/D16vF2 (A) and GH3 (B) whole cell lysates.

RESEARCH USE

For research use only, not for use in diagnostic procedures.

PROTOCOLS

See our web site at www.scbt.com or our catalog for detailed protocols and support products.