

Tiam2 (P-17): sc-13304

BACKGROUND

A gene designated Tiam1 was originally identified as an invasion-inducing gene by proviral tagging in combination with *in vitro* selection for invasiveness. The noninvasive cells were made invasive by transfection of truncated Tiam1 cDNAs into the noninvasive cells. The predicted Tiam1 protein exhibits both Dbl and Pleckstrin-homologous domains (2-4). In fibroblasts, Tiam1 induces a phenotype similar to that of constitutively activated (V12) Rac1, including membrane ruffling, which is inhibited by dominant negative (N17) Rac1. T-cell lymphoma invasion and metastasis 2 (Tiam2) is expressed as a 3.3 kb transcript in the cerebrum and as an 4.4 kb transcript in the cerebellum and testis. The 4.4 kb message encodes a longer form of the 3.3 kb mRNA predicted protein, and both contain homology to the Dbl-homologous region and Pleckstrin-homologous regions of Tiam1. Purified Tiam2 shows GDP-GTP exchange activity.

REFERENCES

- Hart, M.J., et al. 1991. Catalysis of guanine nucleotide exchange on the Cdc42Hs protein by the Dbl oncogene product. *Nature* 354: 311-314.
- Hall, A. 1992. Ras-related GTPases and the cytoskeleton. *Mol. Biol. Cell* 3: 475-479.
- Tominaga, T., et al. 1993. Inhibition of PMA-induced, LFA-1-dependent lymphocyte aggregation by ADP ribosylation of the small molecular weight GTP binding protein, Rho. *J. Cell Biol.* 120: 1529-1537.
- Takaishi, K., et al. 1993. Involvement of Rho p21 and its inhibitory GDP/GTP exchange protein (Rho GDI) in cell motility. *Mol. Cell. Biol.* 13: 72-79.
- Habets, G.G.M., et al. 1994. Identification of an invasion-inducing gene, Tiam1, that encodes a protein with homology to GDP-GTP exchangers for Rho-like proteins. *Cell* 77: 537-549.
- Zheng, Y., et al. 1994. Control of the yeast bud-site assembly GTPase Cdc42. Catalysis of guanine nucleotide exchange by Cdc24 and stimulation of GTPase activity by Bem3. *J. Biol. Chem.* 269: 2369-2372.

CHROMOSOMAL LOCATION

Genetic locus: Genetic locus: TIAM2 (human) mapping to 6q25.2; Tiam2 (mouse) mapping to 17 A1.

SOURCE

Tiam2 (P-17) is an affinity purified goat polyclonal antibody raised against a peptide mapping near the C-terminus of Tiam2 of human origin.

PRODUCT

Each vial contains 200 µg IgG in 1.0 ml of PBS with < 0.1% sodium azide and 0.1% gelatin.

Blocking peptide available for competition studies, sc-13304 P, (100 µg peptide in 0.5 ml PBS containing < 0.1% sodium azide and 0.2% BSA).

STORAGE

Store at 4° C, ****DO NOT FREEZE****. Stable for one year from the date of shipment. Non-hazardous. No MSDS required.

APPLICATIONS

Tiam2 (P-17) is recommended for detection of Tiam2 short and long forms of mouse, rat and human origin by Western Blotting (starting dilution 1:200, dilution range 1:100-1:1000), immunoprecipitation [1-2 µg per 100-500 µg of total protein (1 ml of cell lysate)], immunofluorescence (starting dilution 1:50, dilution range 1:50-1:500) and solid phase ELISA (starting dilution 1:30, dilution range 1:30-1:3000).

Tiam2 (P-17) is also recommended for detection of Tiam2 short and long forms in additional species, including equine, canine and porcine.

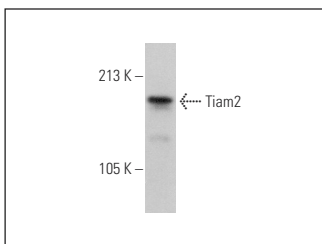
Suitable for use as control antibody for Tiam2 siRNA (h): sc-41736, Tiam2 siRNA (m): sc-41737, Tiam2 shRNA Plasmid (h): sc-41736-SH, Tiam2 shRNA Plasmid (m): sc-41737-SH, Tiam2 shRNA (h) Lentiviral Particles: sc-41736-V and Tiam2 shRNA (m) Lentiviral Particles: sc-41737-V.

Positive Controls: rat cerebellum extract: sc-2398.

RECOMMENDED SECONDARY REAGENTS

To ensure optimal results, the following support (secondary) reagents are recommended: 1) Western Blotting: use donkey anti-goat IgG-HRP: sc-2020 (dilution range: 1:2000-1:100,000) or Cruz Marker™ compatible donkey anti-goat IgG-HRP: sc-2033 (dilution range: 1:2000-1:5000), Cruz Marker™ Molecular Weight Standards: sc-2035, TBS Blotto A Blocking Reagent: sc-2333 and Western Blotting Luminol Reagent: sc-2048. 2) Immunoprecipitation: use Protein A/G PLUS-Agarose: sc-2003 (0.5 ml agarose/2.0 ml). 3) Immunofluorescence: use donkey anti-goat IgG-FITC: sc-2024 (dilution range: 1:100-1:400) or donkey anti-goat IgG-TR: sc-2783 (dilution range: 1:100-1:400) with UltraCruz™ Mounting Medium: sc-24941.

DATA



Tiam2 (P-17): sc-13304. Western blot analysis of Tiam2 expression in rat cerebellum tissue extract.

RESEARCH USE

For research use only, not for use in diagnostic procedures.

MONOS
Satisfaction
Guaranteed

Try **Tiam2 (C-5): sc-514090**, our highly recommended monoclonal alternative to Tiam2 (P-17).