

## PI 3-kinase p110 $\alpha$ (C-17): sc-1331

### BACKGROUND

Phosphatidylinositol 3-kinase (PI 3-kinase) is composed of p85 and p110 subunits. p85 lacks PI 3-kinase activity and acts as an adapter, coupling p110 to activated protein tyrosine kinase. Two forms of p85 have been described (p85 $\alpha$  and p85 $\beta$ ), each possessing one SH3 and two SH2 domains. Various p110 isoforms have been identified. p110 $\alpha$  and p110 $\beta$  interact with p85 $\alpha$ , and p110 $\alpha$  has also been shown to interact with p85 $\beta$  *in vitro*. p110 $\delta$  expression is restricted to white blood cells. It has been shown to bind p85 $\alpha$  and p85 $\beta$ , but it apparently does not phosphorylate these subunits. p110 $\delta$  seems to have the capacity to autophosphorylate. p110 $\gamma$  does not interact with the p85 subunits. It has been shown to be activated by  $\alpha$  and  $\beta\gamma$  heterotrimeric G proteins.

### CHROMOSOMAL LOCATION

Genetic locus: PIK3CA (human) mapping to 3q26.32; Pik3ca (mouse) mapping to 3 A3.

### SOURCE

PI 3-kinase p110 $\alpha$  (C-17) is an affinity purified goat polyclonal antibody raised against a peptide mapping at the C-terminus of PI 3-kinase p110 $\alpha$  of human origin.

### PRODUCT

Each vial contains 200  $\mu$ g IgG in 1.0 ml of PBS with < 0.1% sodium azide and 0.1% gelatin.

Blocking peptide available for competition studies, sc-1331 P, (100  $\mu$ g peptide in 0.5 ml PBS containing < 0.1% sodium azide and 0.2% BSA).

### APPLICATIONS

PI 3-kinase p110 $\alpha$  (C-17) is recommended for detection of PI 3-kinase p110 $\alpha$  of mouse, rat and human origin by Western Blotting (starting dilution 1:200, dilution range 1:100-1:1000), immunofluorescence (starting dilution 1:50, dilution range 1:50-1:500) and solid phase ELISA (starting dilution 1:30, dilution range 1:30-1:3000).

PI 3-kinase p110 $\alpha$  (C-17) is also recommended for detection of PI 3-kinase p110 $\alpha$  in additional species, including equine, canine, bovine and avian.

Suitable for use as control antibody for PI 3-kinase p110 $\alpha$  siRNA (h): sc-39127, PI 3-kinase p110 $\alpha$  siRNA (m): sc-39128, PI 3-kinase p110 $\alpha$  shRNA Plasmid (h): sc-39127-SH, PI 3-kinase p110 $\alpha$  shRNA Plasmid (m): sc-39128-SH, PI 3-kinase p110 $\alpha$  shRNA (h) Lentiviral Particles: sc-39127-V and PI 3-kinase p110 $\alpha$  shRNA (m) Lentiviral Particles: sc-39128-V.

Molecular Weight of PI 3-kinase p110 $\alpha$ : 110 kDa.

Positive Controls: C32 whole cell lysate: sc-2205.

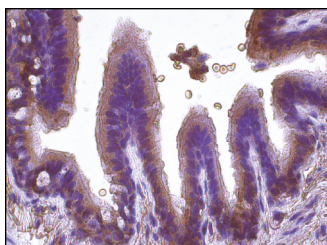
### STORAGE

Store at 4° C, **\*\*DO NOT FREEZE\*\***. Stable for one year from the date of shipment. Non-hazardous. No MSDS required.

### RESEARCH USE

For research use only, not for use in diagnostic procedures.

### DATA



PI 3-kinase p110 $\alpha$  (C-17): sc-1331. Immunoperoxidase staining of formalin fixed, paraffin-embedded human bronchus tissue showing cytoplasmic staining of respiratory epithelial cells.

### SELECT PRODUCT CITATIONS

- Deora, A.A., et al. 1998. A redox-triggered ras-effector interaction. Recruitment of phosphatidylinositol 3'-kinase to Ras by redox stress. *J. Biol. Chem.* 273: 29923-29928.
- Bazuine, M., et al. 2003. Arsenite stimulated glucose transport in 3T3-L1 adipocytes involves both Glut4 translocation and p38<sup>MAPK</sup> activity. *Eur. J. Biochem.* 270: 3891-3903.
- Patel, N., et al. 2003. Intracellular segregation of phosphatidylinositol-3,4,5-trisphosphate by Insulin-dependent actin remodeling in L6 skeletal muscle cells. *Mol. Cell. Biol.* 23: 4611-4626.
- Samuels, Y. 2004. High Frequency of mutations of the PIK3CA gene in human cancers. *Science* 304: 554.
- Gavete, M.L., et al. 2005. Maternal food restriction enhances Insulin-induced GLUT-4 translocation and Insulin signaling pathway in skeletal muscle from suckling rats. *Endocrinology* 146: 3368-3378.
- Barbee, S.D. 2005. Phosphatidylinositol 3-kinase regulates thymic exit. *J. Immunol.* 174: 1230-1238.
- Rakotoarisoa, L., et al. 2006. Angiotensin II-induced delayed stimulation of phospholipase C  $\gamma$ 1 requires activation of both phosphatidylinositol 3-kinase  $\gamma$  and tyrosine kinase in vascular myocytes. *J. Cell. Mol. Med.* 10: 734-748.
- Pattje, W.J., et al. 2010. The phosphatase and tensin homologue deleted on chromosome 10 mediates radiosensitivity in head and neck cancer. *Br. J. Cancer* 102: 1778-1785.

**MONOS**  
Satisfaction  
Guaranteed

Try **PI 3-kinase p110 $\alpha$  (4F3): sc-293172**, our highly recommended monoclonal alternative to PI 3-kinase p110 $\alpha$  (C-17).