

Int-6 (A-11): sc-133251

BACKGROUND

Int-6, also designated eIF3e, eIF3-p46, eIF3-p48 and eukaryotic translation initiation factor 3, subunit 6, regulates translation and protein degradation through binding with three complexes: the eukaryotic translation initiation factor 3 (eIF3), the proteasome regulatory lid and the constitutive photomorphogenesis 9 signalosome. eIF3 is a complex that mediates assembly of 40S ribosomal subunits on mRNA bearing either a 5'-cap or an internal ribosome entry site (IRES). The Int-6 gene is a site of mouse mammary tumor virus (MMTV) integration in murine tumors. Reducing Int-6 expression by RNA interference in HeLa cells alters mitosis progression through defects in spindle formation, chromosome segregation and cytokinesis. These aberrations appear to correlate with an inhibition of cyclin B-Cdk1 kinase activity, due to a protracted inhibitory phosphorylated state of Cdk1.

REFERENCES

- Diella, F., et al. 1997. Characterization of the Int-6 mammary tumor gene product. *DNA Cell Biol.* 16: 839-847.
- Asano, K., et al. 1997. The translation initiation factor eIF3-p48 subunit is encoded by Int-6, a site of frequent integration by the mouse mammary tumor virus genome. *J. Biol. Chem.* 272: 23477-23480.
- Guo, J., et al. 2000. Characterization of the interaction between the interferon-induced protein P56 and the Int-6 protein encoded by a locus of insertion of the mouse mammary tumor virus. *J. Virol.* 74: 1892-1899.
- Rasmussen, S.B., et al. 2001. Evidence for the transforming activity of a truncated Int-6 gene, *in vitro*. *Oncogene* 20: 5291-5301.

CHROMOSOMAL LOCATION

Genetic locus: EIF3E (human) mapping to 8q23.1; Eif3e (mouse) mapping to 15 B3.2.

SOURCE

Int-6 (A-11) is a mouse monoclonal antibody raised against amino acids 246-445 mapping at the C-terminus of Int-6 of human origin.

PRODUCT

Each vial contains 200 µg IgG₁ kappa light chain in 1.0 ml of PBS with < 0.1% sodium azide and 0.1% gelatin.

Int-6 (A-11) is available conjugated to agarose (sc-133251 AC), 500 µg/0.25 ml agarose in 1 ml, for IP; to HRP (sc-133251 HRP), 200 µg/ml, for WB, IHC(P) and ELISA; to either phycoerythrin (sc-133251 PE), fluorescein (sc-133251 FITC), Alexa Fluor® 488 (sc-133251 AF488), Alexa Fluor® 546 (sc-133251 AF546), Alexa Fluor® 594 (sc-133251 AF594) or Alexa Fluor® 647 (sc-133251 AF647), 200 µg/ml, for WB (RGB), IF, IHC(P) and FCM; and to either Alexa Fluor® 680 (sc-133251 AF680) or Alexa Fluor® 790 (sc-133251 AF790), 200 µg/ml, for Near-Infrared (NIR) WB, IF and FCM.

Alexa Fluor® is a trademark of Molecular Probes, Inc., Oregon, USA

STORAGE

Store at 4° C, ****DO NOT FREEZE****. Stable for one year from the date of shipment. Non-hazardous. No MSDS required.

APPLICATIONS

Int-6 (A-11) is recommended for detection of Int-6 of mouse, rat and human origin by Western Blotting (starting dilution 1:100, dilution range 1:100-1:1000), immunoprecipitation [1-2 µg per 100-500 µg of total protein (1 ml of cell lysate)], immunofluorescence (starting dilution 1:50, dilution range 1:50-1:500), immunohistochemistry (including paraffin-embedded sections) (starting dilution 1:50, dilution range 1:50-1:500) and solid phase ELISA (starting dilution 1:30, dilution range 1:30-1:3000).

Int-6 (A-11) is also recommended for detection of Int-6 in additional species, including equine, canine and porcine.

Suitable for use as control antibody for Int-6 siRNA (h): sc-40561, Int-6 siRNA (m): sc-40562, Int-6 siRNA (r): sc-270194, Int-6 shRNA Plasmid (h): sc-40561-SH, Int-6 shRNA Plasmid (m): sc-40562-SH, Int-6 shRNA Plasmid (r): sc-270194-SH, Int-6 shRNA (h) Lentiviral Particles: sc-40561-V, Int-6 shRNA (m) Lentiviral Particles: sc-40562-V and Int-6 shRNA (r) Lentiviral Particles: sc-270194-V.

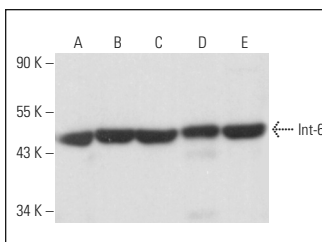
Molecular Weight of Int-6: 48 kDa.

Positive Controls: NIH/3T3 whole cell lysate: sc-2210, HEK293 whole cell lysate: sc-45136 or CCRF-CEM cell lysate: sc-2225.

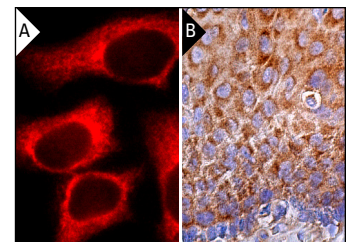
RECOMMENDED SUPPORT REAGENTS

To ensure optimal results, the following support reagents are recommended: 1) Western Blotting: use m-IgGκ BP-HRP: sc-516102 or m-IgGκ BP-HRP (Cruz Marker): sc-516102-CM (dilution range: 1:1000-1:10000), Cruz Marker™ Molecular Weight Standards: sc-2035, UltraCruz® Blocking Reagent: sc-516214 and Western Blotting Luminol Reagent: sc-2048. 2) Immunoprecipitation: use Protein A/G PLUS-Agarose: sc-2003 (0.5 ml agarose/2.0 ml). 3) Immunofluorescence: use m-IgGκ BP-FITC: sc-516140 or m-IgGκ BP-PE: sc-516141 (dilution range: 1:50-1:200) with UltraCruz® Mounting Medium: sc-24941 or UltraCruz® Hard-set Mounting Medium: sc-359850. 4) Immunohistochemistry: use m-IgGκ BP-HRP: sc-516102 with DAB, 50X: sc-24982 and Immunohistomount: sc-45086, or Organo/Limonene Mount: sc-45087.

DATA



Int-6 (A-11): sc-133251. Western blot analysis of Int-6 expression in NIH/3T3 (A), HEK293 (B), CCRF-CEM (C), MOLT-4 (D) and HeLa (E) whole cell lysates.



Int-6 (A-11): sc-133251. Immunofluorescence staining of methanol-fixed HeLa cells showing cytoplasmic localization (A). Immunoperoxidase staining of formalin fixed, paraffin-embedded human esophagus tissue showing cytoplasmic staining of squamous epithelial cells (B).

RESEARCH USE

For research use only, not for use in diagnostic procedures.