

STOX1 (T-12): sc-133268

BACKGROUND

STOX1 (storkhead box 1), also known as PEE4 or C10orf24, is a 989 amino acid protein that exists as 3 alternatively spliced isoforms, designated A, B and C, all of which localize to either the cytoplasm or the nucleus. Functioning as a DNA-binding protein, STOX1 is involved in the development of pre-eclampsia/eclampsia 4 (PEE4), a pregnancy-associated disease that impacts both the mother and the child and is characterized by hypertension, as well as swelling, sudden weight gain and protein in the urine. The gene encoding STOX1 maps to human chromosome 10, which houses over 1,200 genes and comprises nearly 4.5% of the human genome. Defects in some of the genes that map to chromosome 10 are associated with Charcot-Marie Tooth disease, Jackson-Weiss syndrome, Usher syndrome, nonsyndromic deafness, Wolman's syndrome, Cowden syndrome, multiple endocrine neoplasia type 2 and porphyria.

REFERENCES

1. van Dijk, M., et al. 2005. Maternal segregation of the Dutch preeclampsia locus at 10q22 with a new member of the winged helix gene family. *Nat. Genet.* 37: 514-519.
2. Berends, A.L., et al. 2007. STOX1 gene in pre-eclampsia and intrauterine growth restriction. *BJOG* 114: 1163-1167.
3. Kivinen, K., et al. 2007. Evaluation of STOX1 as a pre-eclampsia candidate gene in a population-wide sample. *Eur. J. Hum. Genet.* 15: 494-497.
4. Laivuori, H. 2007. Genetic aspects of preeclampsia. *Front. Biosci.* 12: 2372-2382.
5. Iglesias-Platas, I., et al. 2007. STOX1 is not imprinted and is not likely to be involved in preeclampsia. *Nat. Genet.* 39: 279-280.
6. Online Mendelian Inheritance in Man, OMIM[™]. 2007. Johns Hopkins University, Baltimore, MD. MIM Number: 609397. World Wide Web URL: <http://www.ncbi.nlm.nih.gov/omim/>
7. Rigourd, V., et al. 2008. STOX1 overexpression in choriocarcinoma cells mimics transcriptional alterations observed in preeclamptic placentas. *PLoS ONE* 3: e3905.
8. Rigourd, V., et al. 2009. Re-evaluation of the role of STOX1 transcription factor in placental development and preeclampsia. *J. Reprod. Immunol.* 82: 174-181.

CHROMOSOMAL LOCATION

Genetic locus: STOX1 (human) mapping to 10q21.3.

SOURCE

STOX1 (T-12) is an affinity purified rabbit polyclonal antibody raised against a peptide mapping near the N-terminus of STOX1 of human origin.

STORAGE

Store at 4° C, ****DO NOT FREEZE****. Stable for one year from the date of shipment. Non-hazardous. No MSDS required.

PRODUCT

Each vial contains 100 µg IgG in 1.0 ml of PBS with < 0.1% sodium azide and 0.1% gelatin.

Blocking peptide available for competition studies, sc-133268 P, (100 µg peptide in 0.5 ml PBS containing < 0.1% sodium azide and 0.2% BSA).

APPLICATIONS

STOX1 (T-12) is recommended for detection of STOX1 isoforms A, B and C of human origin by Western Blotting (starting dilution 1:200, dilution range 1:100-1:1000), immunoprecipitation [1-2 µg per 100-500 µg of total protein (1 ml of cell lysate)], immunofluorescence (starting dilution 1:50, dilution range 1:50-1:500) and solid phase ELISA (starting dilution 1:30, dilution range 1:30-1:3000); non cross-reactive with STOX2 .

Suitable for use as control antibody for STOX1 siRNA (h): sc-90668, STOX1 shRNA Plasmid (h): sc-90668-SH and STOX1 shRNA (h) Lentiviral Particles: sc-90668-V.

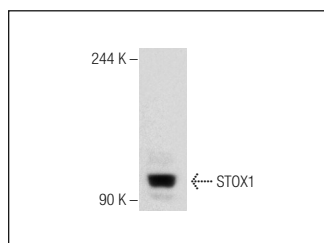
Molecular Weight of STOX1: 111 kDa.

Positive Controls: JAR cell lysate: sc-2276.

RECOMMENDED SECONDARY REAGENTS

To ensure optimal results, the following support (secondary) reagents are recommended: 1) Western Blotting: use goat anti-rabbit IgG-HRP: sc-2004 (dilution range: 1:2000-1:100,000) or Cruz Marker[™] compatible goat anti-rabbit IgG-HRP: sc-2030 (dilution range: 1:2000-1:5000), Cruz Marker[™] Molecular Weight Standards: sc-2035, TBS Blotto A Blocking Reagent: sc-2333 and Western Blotting Luminol Reagent: sc-2048. 2) Immunoprecipitation: use Protein A/G PLUS-Agarose: sc-2003 (0.5 ml agarose/2.0 ml). 3) Immunofluorescence: use goat anti-rabbit IgG-FITC: sc-2012 (dilution range: 1:100-1:400) or goat anti-rabbit IgG-TR: sc-2780 (dilution range: 1:100-1:400) with UltraCruz[™] Mounting Medium: sc-24941.

DATA



STOX1 (T-12): sc-133268. Western blot analysis of STOX1 expression in JAR whole cell lysate.

RESEARCH USE

For research use only, not for use in diagnostic procedures.

PROTOCOLS

See our web site at www.scbt.com or our catalog for detailed protocols and support products.