

Espin (K-14): sc-133324

BACKGROUND

Espin (ESPN), also known as autosomal recessive deafness type 36 protein (DFNB36), is an 854 amino acid cytoplasmic protein that contains 9 ANK repeats and one WH2 domain. The WH2 domain of Espin binds Actin monomers and mediates the assembly of the Actin bundle. This interaction plays a major role in the moderation of the organization, dynamics and signaling capacities of the Actin filament-rich specializations that regulate sensory transduction in various sensory cells. Defects in Espin are the cause of non-syndromic sensorineural deafness autosomal recessive type 36 (DFNB36), a sensorineural hearing loss caused by damage to the neural receptors of the inner ear, the nerve pathways to the brain or the region of the brain responsible for sound. In humans, Espin is expressed as two isoforms produced by alternative splicing and has been found to interact with IRSp53 and Profilin-2. In rodents, four major isoforms ranging from approximately 110 to 25 kDa have been identified with additional splice variants possible.

CHROMOSOMAL LOCATION

Genetic locus: ESPN (human) mapping to 1p36.31; Espn (mouse) mapping to 4 E2.

SOURCE

Espin (K-14) is an affinity purified rabbit polyclonal antibody raised against a peptide mapping within an internal region of Espin of human origin.

PRODUCT

Each vial contains 100 µg IgG in 1.0 ml of PBS with < 0.1% sodium azide and 0.1% gelatin.

Blocking peptide available for competition studies, sc-133324 P, (100 µg peptide in 0.5 ml PBS containing < 0.1% sodium azide and 0.2% BSA).

APPLICATIONS

Espin (K-14) is recommended for detection of Espin of mouse, rat and human origin by Western Blotting (starting dilution 1:100, dilution range 1:50-1:500), immunoprecipitation [1-2 µg per 100-500 µg of total protein (1 ml of cell lysate)], immunofluorescence (starting dilution 1:25, dilution range 1:25-1:250) and solid phase ELISA (starting dilution 1:30, dilution range 1:30-1:3000).

Espin (K-14) is also recommended for detection of Espin in additional species, including canine, porcine and avian.

Suitable for use as control antibody for Espin siRNA (h): sc-78697, Espin siRNA (m): sc-40510, Espin shRNA Plasmid (h): sc-78697-SH, Espin shRNA Plasmid (m): sc-40510-SH, Espin shRNA (h) Lentiviral Particles: sc-78697-V and Espin shRNA (m) Lentiviral Particles: sc-40510-V.

Molecular Weight of Espin isoform 1: 110 kDa.

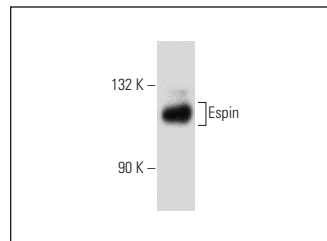
Molecular Weight of Espin mouse variant: 25 kDa.

Positive Controls: Espin (m): 293T Lysate: sc-125310 or rat testis extract: sc-2400.

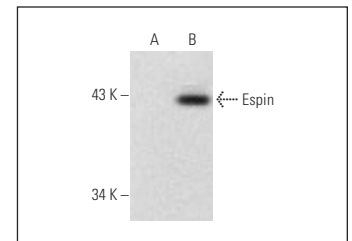
RECOMMENDED SECONDARY REAGENTS

To ensure optimal results, the following support (secondary) reagents are recommended: 1) Western Blotting: use goat anti-rabbit IgG-HRP: sc-2004 (dilution range: 1:2000-1:100,000) or Cruz Marker™ compatible goat anti-rabbit IgG-HRP: sc-2030 (dilution range: 1:2000-1:5000), Cruz Marker™ Molecular Weight Standards: sc-2035, TBS Blotto A Blocking Reagent: sc-2333 and Western Blotting Luminol Reagent: sc-2048. 2) Immunoprecipitation: use Protein A/G PLUS-Agarose: sc-2003 (0.5 ml agarose/2.0 ml). 3) Immunofluorescence: use goat anti-rabbit IgG-FITC: sc-2012 (dilution range: 1:100-1:400) or goat anti-rabbit IgG-TR: sc-2780 (dilution range: 1:100-1:400) with UltraCruz™ Mounting Medium: sc-24941.

DATA



Espin (K-14): sc-133324. Western blot analysis of Espin expression in rat testis tissue extract.



Espin (K-14): sc-133324. Western blot analysis of Espin expression in non-transfected: sc-117752 (A) and mouse Espin transfected: sc-125310 (B) 293T whole cell lysates.

STORAGE

Store at 4° C, ****DO NOT FREEZE****. Stable for one year from the date of shipment. Non-hazardous. No MSDS required.

RESEARCH USE

For research use only, not for use in diagnostic procedures.

PROTOCOLS

See our web site at www.scbt.com or our catalog for detailed protocols and support products.



Try **Espin (E-7): sc-393469** or **Espin (E-1): sc-515657**, our highly recommended monoclonal alternatives to Espin (K-14).