

L1TD1 (C-14): sc-133376

BACKGROUND

L1TD1 (LINE-1 type transposase domain containing 1), also known as ECAT11 (ES cell-associated protein 11), is an 865 amino acid protein that belongs to the transposase 22 family and is encoded by a gene that maps to human chromosome 1p31.3. Chromosome 1 spans 260 million base pairs, contains over 3,000 genes and comprises nearly 8% of the human genome. Chromosome 1 houses a large number of disease-associated genes, including those that are involved in familial adenomatous polyposis, Stickler syndrome, Parkinson's disease, Gaucher disease, schizophrenia and Usher syndrome. Aberrations in chromosome 1 are found in a variety of cancers, including head and neck cancer, malignant melanoma and multiple myeloma.

REFERENCES

1. Eudy, J.D., et al. 1998. Mutation of a gene encoding a protein with extracellular matrix motifs in Usher syndrome type IIa. *Science* 280: 1753-1757.
2. Bowling, E.L., et al. 2000. The Stickler syndrome: case reports and literature review. *Optometry* 71: 177-182.
3. Tayebi, N., et al. 2001. Gaucher disease and parkinsonism: a phenotypic and genotypic characterization. *Mol. Genet. Metab.* 73: 313-321.
4. Plasilova, M., et al. 2004. Exclusion of an extracolonic disease modifier locus on chromosome 1p33-36 in a large Swiss familial adenomatous polyposis kindred. *Eur. J. Hum. Genet.* 12: 365-371.
5. Brandenberger, R., et al. 2004. Transcriptome characterization elucidates signaling networks that control human ES cell growth and differentiation. *Nat. Biotechnol.* 22: 707-716.
6. Oliveira, S.A., et al. 2005. Identification of risk and age-at-onset genes on chromosome 1p in Parkinson disease. *Am. J. Hum. Genet.* 77: 252-264.
7. Yamamoto, E., et al. 2008. LINE-1 hypomethylation is associated with increased CpG island methylation in *Helicobacter pylori*-related enlarged-fold gastritis. *Cancer Epidemiol. Biomarkers Prev.* 17: 2555-2564.
8. Yurov, Y.B., et al. 2008. The schizophrenia brain exhibits low-level aneuploidy involving chromosome 1. *Schizophr. Res.* 98: 139-147.
9. Balcáková, J., et al. 2009. Gain of chromosome arm 1q in patients in relapse and progression of multiple myeloma. *Cancer Genet. Cytogenet.* 192: 68-72.

CHROMOSOMAL LOCATION

Genetic locus: L1TD1 (human) mapping to 1p31.3.

SOURCE

L1TD1 (C-14) is an affinity purified rabbit polyclonal antibody raised against a peptide mapping at the C-terminus of L1TD1 of human origin.

PRODUCT

Each vial contains 100 µg IgG in 1.0 ml of PBS with < 0.1% sodium azide and 0.1% gelatin.

Blocking peptide available for competition studies, sc-133376 P, (100 µg peptide in 0.5 ml PBS containing < 0.1% sodium azide and 0.2% BSA).

APPLICATIONS

L1TD1 (C-14) is recommended for detection of L1TD1 of human origin by Western Blotting (starting dilution 1:100, dilution range 1:50-1:500), immunoprecipitation [1-2 µg per 100-500 µg of total protein (1 ml of cell lysate)], immunofluorescence (starting dilution 1:25, dilution range 1:25-1:250) and solid phase ELISA (starting dilution 1:30, dilution range 1:30-1:3000).

Suitable for use as control antibody for L1TD1 siRNA (h): sc-88192, L1TD1 shRNA Plasmid (h): sc-88192-SH and L1TD1 shRNA (h) Lentiviral Particles: sc-88192-V.

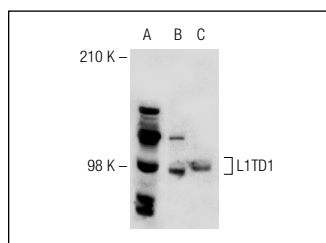
Molecular Weight of L1TD1: 99 kDa.

Positive Controls: HeLa whole cell lysate: sc-2200, Hep G2 cell lysate: sc-2227 or JAR cell lysate: sc-2276.

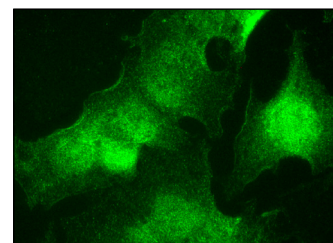
RECOMMENDED SECONDARY REAGENTS

To ensure optimal results, the following support (secondary) reagents are recommended: 1) Western Blotting: use goat anti-rabbit IgG-HRP: sc-2004 (dilution range: 1:2000-1:100,000) or Cruz Marker™ compatible goat anti-rabbit IgG-HRP: sc-2030 (dilution range: 1:2000-1:5000), Cruz Marker™ Molecular Weight Standards: sc-2035, TBS Blotto A Blocking Reagent: sc-2333 and Western Blotting Luminol Reagent: sc-2048. 2) Immunoprecipitation: use Protein A/G PLUS-Agarose: sc-2003 (0.5 ml agarose/2.0 ml). 3) Immunofluorescence: use goat anti-rabbit IgG-FITC: sc-2012 (dilution range: 1:100-1:400) or goat anti-rabbit IgG-TR: sc-2780 (dilution range: 1:100-1:400) with UltraCruz™ Mounting Medium: sc-24941.

DATA



L1TD1 (C-14): sc-133376. Western blot analysis of L1TD1 expression in HeLa (A), JAR (B) and Hep G2 (C) whole cell lysates.



L1TD1 (C-14): sc-133376. Immunofluorescence staining of methanol-fixed Hep G2 cells showing nuclear and cytoplasmic localization.

STORAGE

Store at 4° C, ****DO NOT FREEZE****. Stable for one year from the date of shipment. Non-hazardous. No MSDS required.

RESEARCH USE

For research use only, not for use in diagnostic procedures.