

REEP1 (D-14): sc-133400

BACKGROUND

Transport of G protein-coupled receptors (GPCRs) to the cell surface membrane is critical for receptor-ligand recognition. Mammalian GPCR odorant receptors (ORs), when heterologously expressed in cells, are poorly expressed on the cell surface. REEP1 (receptor expression-enhancing protein 1), is a 201 amino acid multi-pass mitochondrion membrane protein that belongs to the DP1 family. REEP1 interacts with odorant receptor proteins and may enhance the cell surface expression of odorant receptors. Mutations in the REEP1 gene are the third most common cause of hereditary spastic paraplegia (HSP) after spastin and atlastin gene mutations. Mutations in the REEP1 gene also cause spastic paraplegia autosomal dominant type 31, a neurodegenerative disorder. The REEP1 gene is conserved in chimpanzee, dog, cow, mouse, rat, chicken, zebrafish, *A. thaliana* and rice, and maps to human chromosome 2p11.2.

REFERENCES

- Saito, H., Kubota, M., Roberts, R.W., Chi, Q. and Matsunami, H. 2004. RTP family members induce functional expression of mammalian odorant receptors. *Cell* 119: 679-691.
- Online Mendelian Inheritance in Man, OMIM™. 2005. Johns Hopkins University, Baltimore, MD. MIM Number: 609139. World Wide Web URL: <http://www.ncbi.nlm.nih.gov/omim/>
- Züchner, S., Wang, G., Tran-Viet, K.N., Nance, M.A., Gaskell, P.C., Vance, J.M., Ashley-Koch, A.E. and Pericak-Vance, M.A. 2006. Mutations in the novel mitochondrial protein REEP1 cause hereditary spastic paraplegia type 31. *Am. J. Hum. Genet.* 79: 365-369.
- Behrens, M., Bartelt, J., Reichling, C., Winnig, M., Kuhn, C. and Meyerhof, W. 2006. Members of RTP and REEP gene families influence functional bitter taste receptor expression. *J. Biol. Chem.* 281: 20650-20659.
- Beetz, C., Schüle, R., Deconinck, T., Tran-Viet, K.N., Zhu, H., Kremer, B.P., Frints, S.G., van Zelst-Stams, W.A., Byrne, P., Otto, S., Nygren, A.O., Baets, J., Smets, K., Ceulemans, B., Dan, B., Nagan, N., Kassubek, J., et al. 2008. REEP1 mutation spectrum and genotype/phenotype correlation in hereditary spastic paraplegia type 31. *Brain* 131: 1078-1086.
- Tzschach, A., Graul-Neumann, L.M., Konrat, K., Richter, R., Ebert, G., Ullmann, R. and Neitzel, H. 2009. Interstitial deletion 2p11.2-p12: report of a patient with mental retardation and review of the literature. *Am. J. Med. Genet. A.* 149A: 242-245.
- Hewamadduma, C., McDermott, C., Kirby, J., Grierson, A., Panayi, M., Dalton, A., Rajabally, Y. and Shaw, P. 2009. New pedigrees and novel mutation expand the phenotype of REEP1-associated hereditary spastic paraplegia (HSP). *Neurogenetics* 10: 105-110.

CHROMOSOMAL LOCATION

Genetic locus: REEP1 (human) mapping to 2p11.2; Reep1 (mouse) mapping to 6 C1.

RESEARCH USE

For research use only, not for use in diagnostic procedures.

SOURCE

REEP1 (D-14) is an affinity purified goat polyclonal antibody raised against a peptide mapping near the C-terminus of REEP1 of human origin.

PRODUCT

Each vial contains 200 µg IgG in 1.0 ml of PBS with < 0.1% sodium azide and 0.1% gelatin.

Blocking peptide available for competition studies, sc-133400 P, (100 µg peptide in 0.5 ml PBS containing < 0.1% sodium azide and 0.2% BSA).

APPLICATIONS

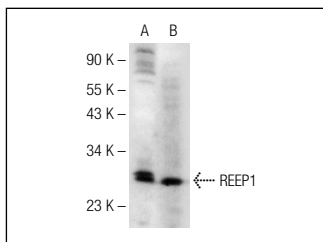
REEP1 (D-14) is recommended for detection of REEP1 of mouse, rat and human origin by Western Blotting (starting dilution 1:200, dilution range 1:100-1:1000), immunoprecipitation [1-2 µg per 100-500 µg of total protein (1 ml of cell lysate)], immunofluorescence (starting dilution 1:50, dilution range 1:50-1:500) and solid phase ELISA (starting dilution 1:30, dilution range 1:30-1:3000); non cross-reactive with other REEP family members.

Suitable for use as control antibody for REEP1 siRNA (h): sc-94388, REEP1 siRNA (m): sc-152790, REEP1 shRNA Plasmid (h): sc-94388-SH, REEP1 shRNA Plasmid (m): sc-152790-SH, REEP1 shRNA (h) Lentiviral Particles: sc-94388-V and REEP1 shRNA (m) Lentiviral Particles: sc-152790-V.

Molecular Weight of REEP1: 22 kDa.

Positive Controls: Jurkat whole cell lysate: sc-2204 or rat testis extract: sc-2400.

DATA



REEP1 (D-14): sc-133400. Western blot analysis of REEP1 expression in Jurkat whole cell lysate (A) and rat testis tissue extract (B).

STORAGE

Store at 4° C, **DO NOT FREEZE**. Stable for one year from the date of shipment. Non-hazardous. No MSDS required.


 MONOS
Satisfaction
Guaranteed

Try **REEP1 (A-8): sc-393242**, our highly recommended monoclonal alternative to REEP1 (D-14).