

# CBX6 (W-22): sc-133442

## BACKGROUND

Polycomb group (PcG) proteins form multiprotein complexes that regulate expression patterns of developmental and cell proliferation genes. CBX6 (chromobox protein homolog 6) is a 412 amino acid protein that is a component of the chromatin-associated PcG complex. Through interaction with PcG, CBX6 modifies chromatin and maintains the transcriptionally repressive state of genes. Members of the chromobox domain protein family are characterized by the presence of a 37 amino acid chromobox (chromatin organization modifier) domain. This domain plays a mechanistic role in targeting chromodomain proteins to specific regions of the nucleus.

## REFERENCES

- Pearce, J.J., et al. 1992. The mouse has a polycomb-like chromobox gene. *Development* 114: 921-929.
- Yamaguchi, K., et al. 1998. Chicken chromobox proteins: cDNA cloning of CHCB1, -2, -3 and their relation to W-hetero-chromatin. *Exp. Cell Res.* 242: 303-314.
- Shao, Z., et al. 1999. Stabilization of chromatin structure by PRC1, a polycomb complex. *Cell* 98: 37-46.
- Muller, J., et al. 2002. Histone methyltransferase activity of a *Drosophila* polycomb group repressor complex. *Cell* 111: 197-208.
- Bernstein, E., et al. 2006. Mouse polycomb proteins bind differentially to methylated Histone H3 and RNA and are enriched in facultative heterochromatin. *Mol. Cell Biol.* 26: 2560-2569.
- Li, B., et al. 2007. Polycomb protein Cbx4 promotes SUMO modification of *de novo* DNA methyltransferase Dnmt3a. *Biochem. J.* 405: 369-378.
- Scott, C.L., et al. 2007. Role of the chromobox protein CBX7 in lymphomagenesis. *Proc. Natl. Acad. Sci. USA* 104: 5389-5394.
- Ruddock-D'Cruz, N.T., et al. 2008. Dynamic changes in localization of chromobox (CBX) family members during the maternal to embryonic transition. *Mol. Reprod. Dev.* 75: 477-488.
- Vincenz, C. and Kerppola, T.K. 2008. Different polycomb group CBX family proteins associate with distinct regions of chromatin using nonhomologous protein sequences. *Proc. Natl. Acad. Sci. USA* 105: 16572-16577.

## CHROMOSOMAL LOCATION

Genetic locus: CBX6 (human) mapping to 22q13.1; Cbx6 (mouse) mapping to 15 E1.

## SOURCE

CBX6 (W-22) is a Protein A purified rabbit polyclonal antibody raised against synthetic CBX6 peptide of human origin.

## PRODUCT

Each vial contains 100 µg IgG in 1.0 ml PBS with < 0.1% sodium azide, 0.1% gelatin and < 0.02% sucrose.

## APPLICATIONS

CBX6 (W-22) is recommended for detection of CBX6 of mouse, rat and human origin by Western Blotting (starting dilution 1:200, dilution range 1:100-1:1000), immunoprecipitation [1-2 µg per 100-500 µg of total protein (1 ml of cell lysate)] and solid phase ELISA (starting dilution 1:30, dilution range 1:30-1:3000).

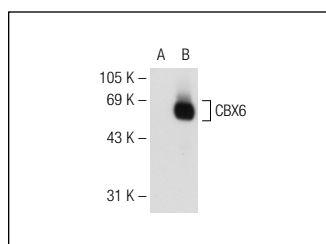
Suitable for use as control antibody for CBX6 siRNA (h): sc-72815, CBX6 siRNA (m): sc-142038, CBX6 shRNA Plasmid (h): sc-72815-SH, CBX6 shRNA Plasmid (m): sc-142038-SH, CBX6 shRNA (h) Lentiviral Particles: sc-72815-V and CBX6 shRNA (m) Lentiviral Particles: sc-142038-V.

Molecular Weight of (predicted) CBX6: 44 kDa.

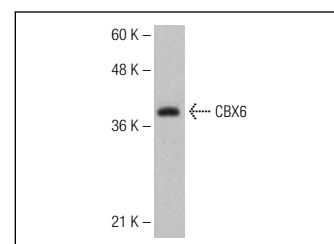
Molecular Weight of (observed) CBX6: 55 kDa.

Positive Controls: Jurkat whole cell lysate: sc-2204 or CBX6 (h): 293T Lysate: sc-117038.

## DATA



CBX6 (W-22): sc-133442. Western blot analysis of CBX6 expression in non-transfected: sc-117752 (A) and human CBX6 transfected: sc-117038 (B) 293T whole cell lysates.



CBX6 (W-22): sc-133442. Western blot analysis of CBX6 expression in Jurkat whole cell lysate.

## STORAGE

Store at 4° C, \*\*DO NOT FREEZE\*\*. Stable for one year from the date of shipment. Non-hazardous. No MSDS required.

## RESEARCH USE

For research use only, not for use in diagnostic procedures.

## PROTOCOLS

See our web site at [www.scbt.com](http://www.scbt.com) or our catalog for detailed protocols and support products.

**MONOS**  
Satisfaction  
Guaranteed

Try **CBX6 (H-1): sc-393040**, our highly recommended monoclonal alternative to CBX6 (W-22).