

claudin-23 (A-25): sc-133465

BACKGROUND

The claudin superfamily consists of structurally related proteins that are important structural and functional components of tight junctions. Claudin-23, also known as CLDN23 or CLDNL, is a 292 amino acid multi-pass membrane protein that localizes to cell junctions and belongs to the claudin family. Expressed in stomach and placenta, as well as in germinal center B-cells, claudin-23 is thought to exhibit calcium-dependent cell-adhesion activity through which it plays an essential role in tight junction-specific obliteration of the intercellular space. Human claudin-23 shares 80% sequence similarity with its mouse counterpart, suggesting a conserved role between species. Overexpression of claudin-23 is associated with colon tumors, implicating claudin-23 as a possible metastasis factor.

REFERENCES

- Gress, T.M., Müller-Pillasch, F., Geng, M., Zimmerhackl, F., Zehetner, G., Friess, H., Büchler, M., Adler, G. and Lehrach, H. 1996. A pancreatic cancer-specific expression profile. *Oncogene* 13: 1819-1830.
- Online Mendelian Inheritance in Man, OMIM™. 2002. Johns Hopkins University, Baltimore, MD. MIM Number: 609203. World Wide Web URL: <http://www.ncbi.nlm.nih.gov/omim/>
- Katoh, M. and Katoh, M. 2003. CLDN23 gene, frequently downregulated in intestinal-type gastric cancer, is a novel member of claudin gene family. *Int. J. Mol. Med.* 11: 683-689.
- Katoh, M. 2005. Epithelial-mesenchymal transition in gastric cancer. *Int. J. Oncol.* 27: 1677-1683.
- Ballana, E., Mercader, J.M., Fischel-Ghodsian, N. and Estivill, X. 2007. MRPS18CP2 alleles and DEFA3 absence as putative chromosome 8p23.1 modifiers of hearing loss due to mtDNA mutation A1555G in the 12S rRNA gene. *BMC Med. Genet.* 8: 81.
- Rikova, K., Guo, A., Zeng, Q., Possemato, A., Yu, J., Haack, H., Nardone, J., Lee, K., Reeves, C., Li, Y., Hu, Y., Tan, Z., Stokes, M., Sullivan, L., Mitchell, J., Wetzel, R., Macneill, J., Ren, J.M., Yuan, J., et al. 2007. Global survey of phosphotyrosine signaling identifies oncogenic kinases in lung cancer. *Cell* 131: 1190-1203.
- Gaetje, R., Holtrich, U., Engels, K., Kissler, S., Rody, A., Karn, T. and Kaufmann, M. 2008. Differential expression of claudins in human endometrium and endometriosis. *Gynecol. Endocrinol.* 24: 442-449.
- Will, C., Fromm, M. and Müller, D. 2008. Claudin tight junction proteins: novel aspects in paracellular transport. *Perit. Dial. Int.* 28: 577-584.

CHROMOSOMAL LOCATION

Genetic locus: CLDN23 (human) mapping to 8p23.1.

SOURCE

claudin-23 (A-25) is an affinity purified rabbit polyclonal antibody raised against synthetic claudin-23 peptide of human origin.

RESEARCH USE

For research use only, not for use in diagnostic procedures.

PRODUCT

Each vial contains 50 µg IgG in 500 µl PBS with < 0.1% sodium azide, 0.1% gelatin and < 0.02% sucrose.

APPLICATIONS

claudin-23 (A-25) is recommended for detection of claudin-23 of human origin by Western Blotting (starting dilution 1:200, dilution range 1:100-1:1000), immunoprecipitation [1-2 µg per 100-500 µg of total protein (1 ml of cell lysate)] and solid phase ELISA (starting dilution 1:30, dilution range 1:30-1:3000).

Suitable for use as control antibody for claudin-23 siRNA (h): sc-77716, claudin-23 shRNA Plasmid (h): sc-77716-SH and claudin-23 shRNA (h) Lentiviral Particles: sc-77716-V.

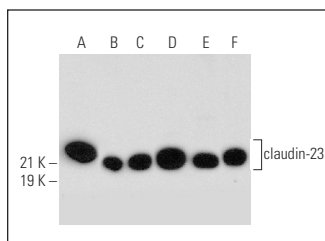
Molecular Weight of claudin-23: 32 kDa.

Positive Controls: K-562 whole cell lysate: sc-2203, Jurkat whole cell lysate: sc-2204 or Y79 cell lysate: sc-2240.

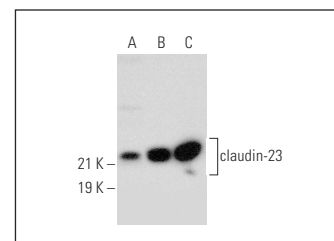
RECOMMENDED SECONDARY REAGENTS

To ensure optimal results, the following support (secondary) reagents are recommended: 1) Western Blotting: use goat anti-rabbit IgG-HRP: sc-2004 (dilution range: 1:2000-1:100,000) or Cruz Marker™ compatible goat anti-rabbit IgG-HRP: sc-2030 (dilution range: 1:2000-1:5000), Cruz Marker™ Molecular Weight Standards: sc-2035, TBS Blotto A Blocking Reagent: sc-2333 and Western Blotting Luminol Reagent: sc-2048. 2) Immunoprecipitation: use Protein A/G PLUS-Agarose: sc-2003 (0.5 ml agarose/2.0 ml).

DATA



claudin-23 (A-25): sc-133465. Western blot analysis of claudin-23 expression in K-562 (A), TE671 (B), HeLa (C), Jurkat (D), COLO 320DM (E) and Y79 (F) whole cell lysates.



claudin-23 (A-25): sc-133465. Western blot analysis of claudin-23 expression in JEG-3 (A), MDA-MB-231 (B) and COLO 205 (C) whole cell lysates.

STORAGE

Store at 4° C, **DO NOT FREEZE**. Stable for one year from the date of shipment. Non-hazardous. No MSDS required.

PROTOCOLS

See our web site at www.scbt.com or our catalog for detailed protocols and support products.